



TREASURE ISLAND

Instruction Manual

Epilepsy Warning

Read before using your IBM PC or Compatible computer or allowing your children to use the system.

A very small percentage of people have a condition that causes them to experience an epileptic seizure or altered consciousness when exposed to certain light patterns or flashing lights, including those that appear on a monitor screen and while playing games. Such people may have no medical history of seizures or epilepsy. Please take the following precautions to minimize any risk:

Prior to use

- If you or anyone in your family has ever had an epileptic condition or has experienced altered consciousness when exposed to flickering light, consult your doctor prior to playing.
- Sit at least 2.5m (8ft) away from the television screen.
- If you are tired or have not had much sleep, rest and commence playing only after you are fully rested.
- Make sure that the room in which you are playing is well lit.
- Use the game on as small a monitor screen as possible (preferably 14" or smaller).

During use

- Rest for at least 10 minutes per hour while playing a video game.
- Parents should supervise their children's use of video games. If you or your child experiences any of the following symptoms while playing a video game: dizziness, altered vision, eye or muscle twitches, loss of awareness, disorientation, any involuntary movement or convulsions IMMEDIATELY discontinue use and consult your doctor.



Contents

System Requirements	2
Installation	3
Introduction	4
Exploring the Book!	5
The Bookmark	6
The Games	6
Mutiny!	6
Pirate Shootout	8
Stockade Attack	9
Broadside	10
Technical Assistance	12
Customer Service	14
Credits	15

System Requirements

This game requires:

Windows® 3.1x:

486 / 33 MHz or faster
4 Meg Ram, 8 Meg recommended
Windows-compatible sound card
Windows-compatible mouse

Windows® 95

486 / 33 MHz or faster
8 Meg Ram or higher recommended
Windows-compatible sound card
Windows-compatible mouse

Installation

To start your adventure, insert the Treasure Island CD into your CD-ROM drive.

In Windows® 3.1x:

- Go to the Program Manager Menu Bar, select FILE, then select RUN.
- In the box that appears, type D:\SETUP and press the enter key to begin the installation. If your CD-ROM Drive is not D: then you will need to replace the D with the correct letter that indicates your CD-ROM Drive.

OR

- Go to the Program Manager Menu Bar and select the File Manager then select your CD drive.
- Click on the SETUP.exe file to begin the installation.

The setup program will install the required files to your hard drive and add the Treasure Island icons to your Windows desktop.

In Windows® 95:

Upon inserting the CD into the drive, the AUTOPLAY program will configure itself to your system and begin the program automatically.

Introduction

Hello, my name is Jim Hawkins. Not so long ago, at the 'ole Admiral Benbow Inn, I stumbled upon a map belonging to an old pirate. And so began an adventure that would change me for days to come. I never thought that things could get so out of control. Well, let me start at the beginning.....

The adventure starts here! —The Main Menu



- To have the story read to you in its entirety click on the Skull & Crossbones on the scroll located in the lower right hand corner of the screen.
- If you want to stop at any point, click on the bell pull located at the top right hand corner of the screen.

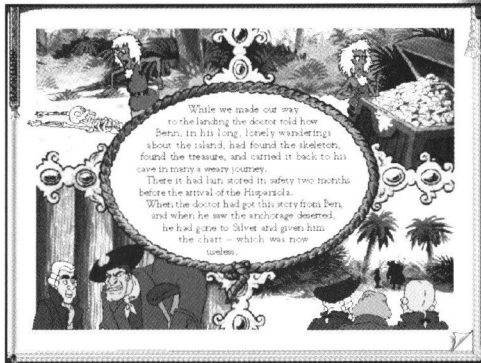
- To enjoy the maximum adventure with all the extra fun, click any of the chapter highlight numbers on the map. To find all of the fun surprises hidden throughout the story, wait until the book icons appear, then click on the various parts of the picture.
- To go directly into the games, simply click on one of the animated game icons you will see at various points along the route.

Exploring the Book!

On the main menu, if you move the cursor around the map, you will find the highlights from the book. As you locate each highlight or game, the characters will announce the name of the area. You may select any of the highlights from the book by simply clicking on them.

Once you have entered an area, I will highlight the text for you as the story is read aloud. After the page is completed, you may explore the area to find the many interesting and exciting items hidden there!

When you have finished exploring, click on the lower right hand corner of the page to move along to the next page.



The Bookmark

Sometimes books take a little time to finish. Most people don't want to start from the beginning again. To solve this dilemma, we have included a bookmark for your convenience. You may click on this at any time during your adventure in order to save your place.

The bookmark is located at the upper left hand corner of the screen. When the bookmark is placed, it will return you to the main map screen. From here, you may choose to quit. When you return to the story next time, just click on the bookmark on the main map screen to start the story where you left off.

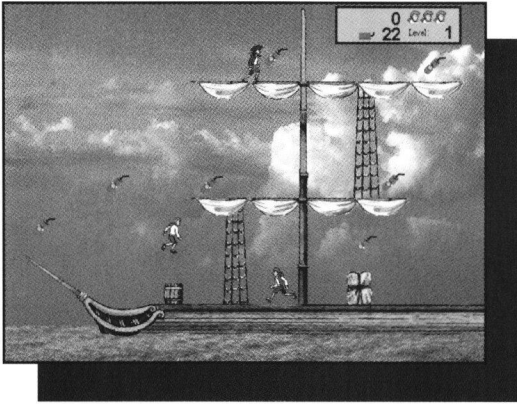
You will need to reset the bookmark again after each time it returns you to the story.

The Games

Along the route Jim travels on the Main Menu you will find four different, animated game icons. Each of these icons indicates a different game you may play.

Mutiny!

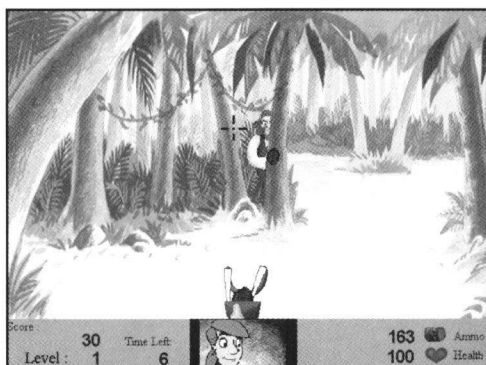
All my friends have been taken prisoner on the *Hispaniola* and now it's up to me to free them!



- The aim of this game is to help your shipmates escape from the brig of the *Hispaniola* by collecting the required amount of dynamite. The ship is several screens long and high!
- Use the arrow keys to move around and press Shift to jump.
- Avoid the angry mutineers swarming on the deck while dodging gunfire and the occasional angry parrot.
- When you have collected the required number of explosives, go to the brig at the rear of the ship. The dynamite will be placed and you must now locate the torch within the time limit.
- Collect the cutlass and you can defeat the pirates for a short time by walking into them.
- Each dynamite stick collected earns you 10 points.
- Each pirate defeated with the cutlass earns you 20 points.
- To quit the game and return to the main menu, press the Escape key.

Pirate Shootout

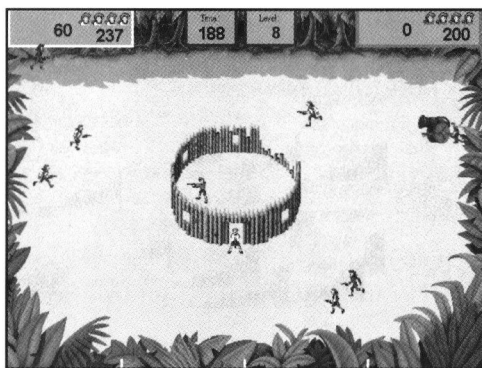
It's just me against them! Now I must escape!



- The object is to shoot all the objects that appear in the jungle and avoid being hit. You are able to hit incoming objects with your slingshot.
- First Aid kits add 20 points to your health meter.
- Barrels add 40 points to your ammo meter.
- To quit the game and return to the main menu, press the Escape key.

Stockade Attack

It's time to man the guns and defend the stockade from the evil, foul-smelling pirates for as long as you can before time expires! Defense is the name of the game here. Don't let them get too close!



- Shoot at the pirates as they try to plant bombs along the walls.
- If the pirates reach an opening in the walls, you will lose a life.
- Long John Silver will appear occasionally. Shoot at him to gain a power-up for your weapon!
- During the second part of this game you will need to collect ammo while being chased by angry pirates.
- To quit the game and return to the main menu, press the Escape key.

Player one controls

Left arrow - Rotate counterclockwise

Right arrow - Rotate clockwise

Up / Down arrow - Adjust the spread of fire

Enter - FIRE!

Player two controls

Z - Rotate counterclockwise

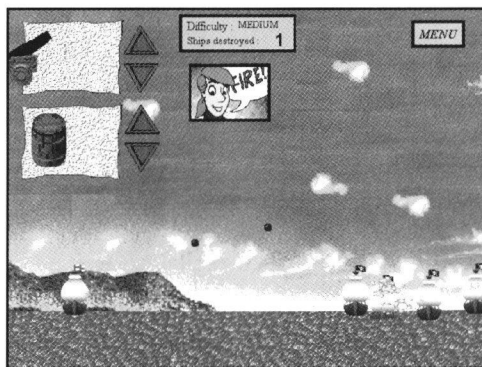
C - Rotate clockwise

S / X - Adjust the spread of fire

Shift - FIRE!

Broadside

“Pirate ships off the starboard bow!” is the cry as all hands are set to man the gun batteries and fight off the buccaneers!



- Use your mouse to adjust the elevation and gunpowder strength of your cannon to change the distance your shots travel.
- Try to sink as many enemy ships as possible before you receive a direct hit yourself.

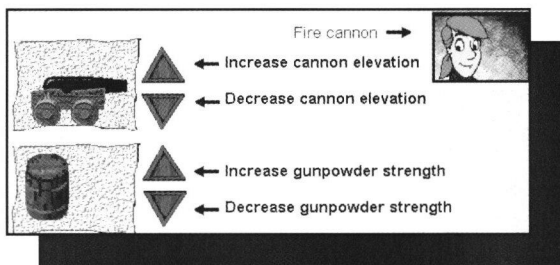
- More difficult levels include enemies that alter their position.
- To quit the game and return to the main menu click on the menu button or press the Escape key.

Player one controls

Left / right arrows - Ship movement

Player two controls

Z / C - Ship movement



Technical Assistance

Treasure Island has been thoroughly tested on numerous PCs, using a variety of different graphics boards, sound boards and CD-ROM drivers. It is unlikely you will experience any problems, but should you do so it could be because your PC has an unusual combination of these devices that could make it incompatible with the program.

The program has a number of minimum requirements. Before calling U.S. Gold, please check whether the difficulty could be caused by one of the following:

Screen display: Treasure Island uses 256 colors. Your PC should have a Super VGA card (with at least 512k video RAM). For best results it should be set to 640x480 with 256 colors.

Screen size: If there is a black border round the book, it means you are running in a higher resolution than necessary. To make the book fill the screen change your resolution to 640x480.

Memory: Treasure Island requires 4 Megs of RAM, but it's much happier with 8 Megs. If you have a problem with 4 Meg machines, go into DOS and key:

edit CONFIG.SYS

Put REM before the line with EMM386.EXE.
If there is still a problem, go into DOS and key:

edit AUTOEXEC.BAT

Put REM before the line with SMARTDRV. Save this, reboot and try again.

If problems still persist, read the section entitled 'Out of memory' below.

Other programs: Treasure Island is happier when not competing with other programs. When running Treasure Island, we suggest you close down any other applications.

Networking: It is not advisable to run this program if your PC is attached to a network. Reload Windows without the network drivers by keying "WIN /N".

Incompatible devices: During the intensive evaluation program, Treasure Island was tested using many different hardware and software devices, including accelerators and file compression packages, to ensure compatibility. If you feel a device installed in your PC may be affecting performance it should be disabled before running Treasure Island.

Out of Memory: If this error message is displayed you will need to increase the size of the swap file on your hard disk. To find out how to do this look up the "386 Enhanced Command" section of your Windows manual.

"[MCI] CD Audio driver is not installed": If this error message is displayed you will need to install the Microsoft audio compact-disc player driver. To find out how to do this look up the "Setting up device drivers for audio compact-disc players" section of your Windows manual.

Customer Service

Please read the following section before calling the HELP Line:

Because of the millions of different hardware and software combinations possible with today's PC's, you may still have to refer to your computer manufacturer, or software publisher in order to properly configure their product to run with our game. If at all possible, be near your computer when you call. The Customer Service agent will need specific information about your machine and may need you to access or change some files while you are on the phone. If it is not possible to be near your computer, be sure to have:

- A listing of all of your machine's hardware and its settings.
- The contents of your AUTOEXEC.BAT and CONFIG.SYS files.
- All the information listed after CHKDSK or MEM command.
- The current configuration of your game.

Our HELP Line number is (415) 693-0497. Customer service is available Monday through Friday 9:00 AM to 5:00 PM Pacific Time.

Credits

For Front Street Publishing:

Game Producer - Imagination Classics

Brian Schorr

Quality Assurance

Mike Schmitt, Frank Hom

Tom Marx, Dan Wong

Danny Lam, Rickey Chow

M. Steve Dreo

Brand Manager

MaryLynn Slattery

Product Manager

Sean Mylett

Marketing Services

Kelly Lindlar, Lee Wilkinson

Manual

Brian Schorr

Special Thanks To:

Robert Botch, Eileen Noguchi

Karl Hess, Joseph Olin

Jerry Soto, Cindy De Martini

Susan Powers, Frank Alizaga Jr.

Aida Santiago, Joe O'Donnell

Julie Schorr

Limited Warranty

U.S. Gold reserves the right to make improvements in the product described in this manual, at any time and without notice. U.S. Gold makes no warranties expressed or implied, with respect to this manufactured material, its quality, merchantability or fitness from any particular purpose. If any defect arises during the ninety day limited warranty on the product itself (i.e., not the software program, which is provided "as is") return it in its original condition to the point of purchase.

Customer Service

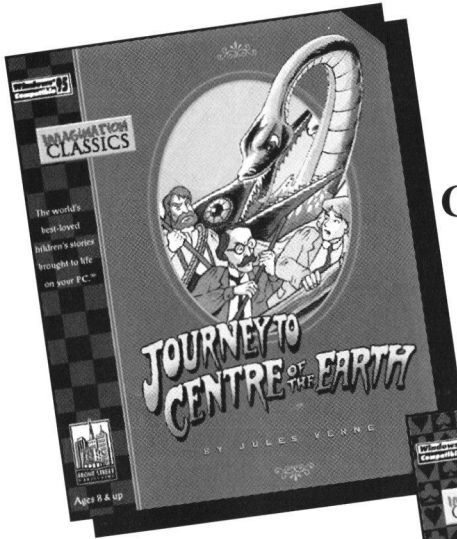
Please read the following section before calling the HELP Line:

Because of the millions of different hardware and software combinations possible with today's PC's, you may still have to refer to your computer manufacturer, or software publisher in order to properly configure their product to run with our game. If at all possible, be near your computer when you call. The Customer Service agent will need specific information about your machine and may need you to access or change some files while you are on the phone. If it is not possible to be near your computer, be sure to have:

- A listing of all of your machine's hardware and its settings.
- The contents of your AUTOEXEC.BAT and CONFIG.SYS files.
- All the information listed after CHKDSK or MEM command.
- The current configuration of your game.

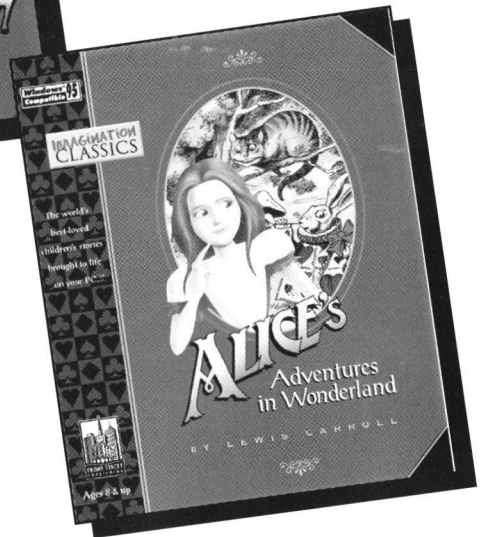
Our HELP Line number is (415) 693-0497. Customer service is available Monday through Friday 9:00AM to 5:00PM Pacific Time.

Look for These Other Great Titles
by
Imagination Classics



Journey to the
Center of the Earth

Alice in
Wonderland



Available soon for IBM PC CD-ROM
and Compatibles