



WORLDWIDE SOCCER

Designed for

Microsoft
Windows 95



85056

Contents

System Requirements	4
Getting Started	4
Using Menus	6
Championship Match	7
Fancy Footwork	8
Options (Main Game Menu)	9
Game Play Modes	10
For Multiple Player Game	10
Exhibition	11
World League	11
Worldwide Cup	12
Cup Tournament	12
Penalty Shoot Out	12
Player Edit	13
Select Screens	14
Changing the Strategy	17
Game Play!	20
Mastering the Moves	22
Post-Match Screens	28
Troubleshooting	32
Credits	34

System Requirements

Operating system:	Windows 95
Minimum CPU Type & Speed:	Pentium processor, 90 Mhz
Memory:	16MB
Graphics:	SVGA, (8 bit required) 16 bit colors
CD-ROM:	2x (4x recommended)
Sound Card:	Sound Blaster 16 or compatible
Other:	Keyboard, Windows95 Compatible joystick or Gamepad

Getting Started

WORLDWIDE SOCCER runs under Windows 95 only.

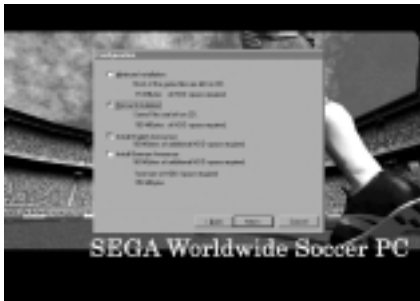
To Play WORLDWIDE SOCCER under Windows 95, follow these steps:

1. Place the WORLDWIDE SOCCER CD in the CD-ROM drive, label side up. Close the tray.
2. After a few moments, a dialog box will appear, giving you a choice of options.



The first time you insert the WORLDWIDE SOCCER CD-ROM, the dialog box will give you the option of installing the game or exiting the program. Select INSTALL to begin the

installation process. Here you can elect to perform a “Full” install (most of the program is stored to your hard drive for better performance) or perform a “Minimum” install (part of the program runs from your hard drive and the rest runs on the CD). If you do not wish to install WORLDWIDE SOCCER at this time, select CANCEL.



Under Windows 95, the WORLDWIDE SOCCER installation procedure analyzes your specific system configuration and loads the appropriate drivers for your sound card and video display card. In addition, WORLDWIDE SOCCER will create a new program group called WORLDWIDE SOCCER and place the WORLDWIDE SOCCER program in that group.

Welcome Screen

Here you elect to Play, (Re) Install, Uninstall and/or Exit the WORLDWIDE SOCCER program.



Once WORLDWIDE SOCCER is installed, whenever you insert the CD-ROM in the drive, you will be given the option to Play, (Re) Install, Uninstall or Cancel. Click Install to Reinstall WORLDWIDE SOCCER if you wish to remove WORLDWIDE SOCCER from your system, or CANCEL to take no action. See “Using Menus,” below for more information on starting or resuming games.

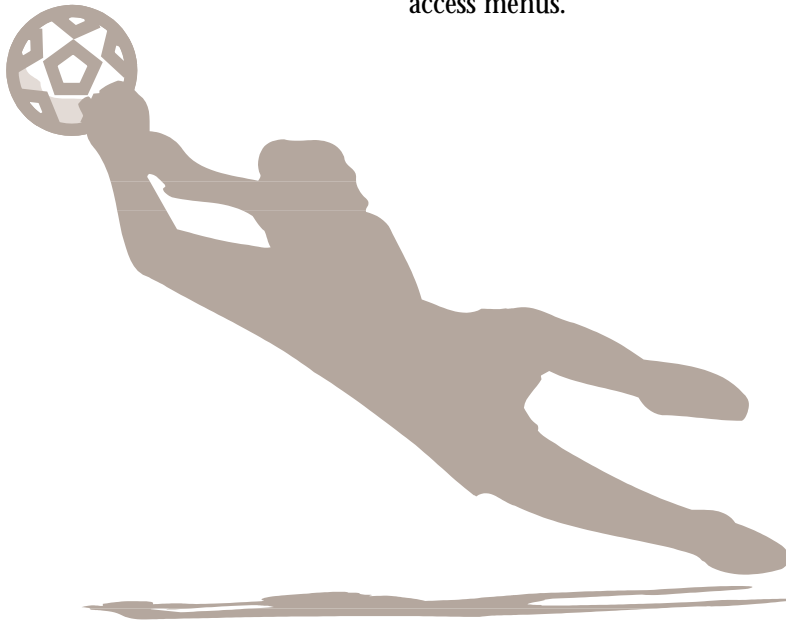
1. Configuration: Minimum Installation–15 Megabytes; Normal Installation–100 Megabytes; Play by Play announcing with either German or English, German/English–50 Megabytes Each.

2. Get Destination Path: Choose Directory
–Where you want to install game.

3. Direct X: Uses Microsoft Direct X–If you have Direct X installed, do not install Direct X. Direct X has been known to overwrite certain video and sound drivers improperly. If you already have Direct X installed, choose “Do not Install Direct X.” If you do not have Direct X installed, choose “install Direct X.” If you experience any video or sound problems with WORLDWIDE SOCCER, go to the troubleshooting section of this manual on page 32.

Using Menus

When you play WORLDWIDE SOCCER in a small window, you will be able to access the menu items at any time. In Full screen mode, you can bring up the menubar by pressing F3 or the right mouse button. To access a menu, move the arrow pointer to the menu title on the menu bar and press the Left mouse button. To select an item from the menu, move the pointer down to highlight the item and click the Left mouse button. In full screen mode pause the game to access menus.



Championship Match

There are five intense playing modes with SEGA WORLDWIDE SOCCER which allow you to choose from various game situations. Play a one match battle, an entire grueling season or take on the world with Network Play for up to four players. You can also use the Player Edit mode to customize your dream team. Forty-eight teams stand ready for you to command. So turn on your PC and get ready to do some slide tackles, headers, bicycle kicks, back-heel passes, banana kicks, half-volleys and rainbow kicks!

Fancy Footwork

Player mobility:

Up Key
Down Key
Left Key
Right Key

Up Arrow
Down Arrow
Left Arrow
Right Arrow

Offense/Defense

Shoot/Sliding Tackle
Pass/Charge
Long Pass
Overlap/Offside Trap
Pressing
Man to Man
Activates Goal Keeper

Z
X
C
D
S
A + S
A



Run Fast

Shift Key

Change Player

Control

Game Pause

Enter Key

Options (Main Game Menu)

Game

Restart (Alt+F2): Restart the game at any time

Pause (F3): Pause the game at any time.

Exit Game (Alt+F4): Exit the game at any time.

Setting

Screen Mode: Resolution/Color Depth. Go from window to full screen viewing. Press again to return to window view. Choose from 320x240 low resolution with 256 colors to 640x480 high resolution with 16 bit color with over 65,000 colors. (Windowed mode only in 16 bit color.)

Device Settings: *Select input devices for each player.*

Sound Setting: *Turn the sounds of the game ON or OFF.*

Background Track

Sound Effects

Crowd Noise

Crowd Option

Pitch Detail: *Adjust the detail of the background.*

High

Medium

Low

Replay Records Mode:

- All Goals** All Goals will be saved automatically.
- Selected Goals** Will ask each time. The user will be prompted after each goal.
- Except Goals** Same as All Goals except ones cancelled.
- Don't Record** No Goals Saved.

Game Options



Level: *Set the strength of computer controlled teams.*

- Easy
- Normal
- Hard
- Hardest

Time: *Choose the length of the half.*

- 3 Min. Half
- 6 Min. Half
- 9 Min. Half
- 15 Min. Half

View: *Set the viewing angle of the soccer pitch.*

- Goal Line
- Touch Line
- Left Isometric
- Right Isometric

Camera: *Set the viewing distance of the game.*

- Zoom
- Close-Up
- Normal
- Long Shot

Weather: *Choose the conditions for your game. Be aware that in rainy weather the ball is slippery and won't travel as far as in fine conditions.*

- Fine
- Rain
- Random

Radar

- On
- Off

Marker: *Player Control 1, 2, 3 or 4: Choose between the manual or automatic selection of players to gain control of the ball.*

Rules: *On/Off Option*

Off Side Cards Loss Time
Foul Injury Extra Time
Shoot Out

Game Play Modes

For Multiple Player Game

You can play up to a four player game via IPX, TCP/IP, modem or serial link. Choose the Link Game option from the Main Menu.



IPX Link up with a friend over a local network.
TCP/IP: Play anyone over the internet or on local area network. Enter the IP address of the session host you wish to challenge or see a listing of anyone looking for a game. Run "ipcfg" to get your IP address.

Modem: Play over the phone line.

Serial: With a cable, link up another computer and hit the field.

Exhibition

Play a one match battle royale with up to four players.

World League

Choose 16 teams and attempt to finish a season with the best record of all. At the end of the season, player awards are given out.

Option Select Screen Instructions

Goal Ranking

GOAL RANKING		Goals	Assists	Shots	Goals
1	Al	2	1	1	0
2	Palatin	2	0	2	0
3	Waltner	2	2	4	0
4	McChiffie	1	1	0	0
5	Richlight	1	1	0	0
6	Moira	1	0	1	0
7	Elbo	1	1	0	0
8	Evo	1	1	0	0
9	Maxwell	1	0	0	1
10	McClurg	1	0	1	0

Press the UP or DOWN to scroll the list of players. Press the LEFT or RIGHT to scroll players stats

Schedule

SCHEDULE		1	2	3	4	5
1	NEW LEAVES					
2	CROATIAN					
3	BULGARIA					
4	NEW KOREA					
5	TURKEY					
6	INDONESIA					
7	USA					
8	THE LEAVES					

Press the UP or DOWN to scroll the teams

Press the LEFT or RIGHT to scroll through the schedule

Chart



Press the UP or DOWN to scroll the list of teams

Press the LEFT or RIGHT to scroll the team's rank

Not Usable



Press the UP or DOWN to scroll the teams

League Stats



Press Button 2 on any of the screens mentioned above to return to the main screen.

Worldwide Cup

If you can battle your team through the preliminaries, you're headed straight for the championship.

Cup Tournament

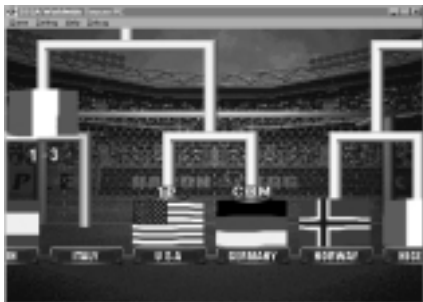
Fight your team through a playoff tree tournament with up to 16 teams.

Participant Select



From the Participant Select screen select the number of teams to compete in the tournament. Press the left, right, up or down key to scroll the number and push Enter or Button 1 to select.

When selecting teams, set each as a one-player, two-player or CPU controlled.



The **Playoffs Tree** displays the team matchups. Press Enter or Button 1 or Start to have the first match begin. If the match is an-all computer battle, only the score is displayed.

After the match is over press Enter or Button 1 or Start to forward to the next match.

Penalty Shoot Out

In **Penalty Shoot Out** each side is given five attempts to kick the ball into the goal. The team that scores the most wins. If the score is still tied after the attempts are made, a “sudden death” round of one kick is added. Rounds are added until only one team scores.

See **Penalty Kick** on Pg. 26 in the Mastering the Moves section for info on moving kickers and goalies during penalty kicks.

Player Edit

After the **Team Select** screen the Edit Data screen appears. Once you have stored data you can use the delete data and restore default data, if desired. Press the arrow keys/direction pad to highlight and Enter key or Button 1 to select.



Select the name of the player to be edited. Highlight the name and press Button 1 or Enter.



Use the following

instructions to edit the name of the selected player:

**Arrow keys/
Enter key/
Button 1**

Highlights characters

**Arrow keys/
Enter key/
Button 1** Selects a character

**Arrow keys/
Enter key/
Button 1** Erases selected character
(selecting DELETE
also does this)

**Arrow keys/
Enter key/
Button 1** Scrolls selected characters in
those directions (Selecting an
arrow character also does this)

Button 2 Toggles between OK
and character grid

When finished highlight OK and press Enter or Button 1 to select. Selecting CANCEL deletes the new data. Change the data as many times as desired.

When you press Button 2 on the Player Edit screen and are prompted where to store the data, highlight and select Enter or Button 1.

The second time you change a player's name you are asked to confirm the data overwrite. Highlight and press Enter or Button 1 to select.

Golden Goal

List Saved Goals and view them

WW Soccer PC has a new feature which allows the user to save your replays and view them later. To choose which type of goals you want to save, choose the “Replay Records mode” option in the settings menu.



All Goals

Will save all goals scored

Selected Goals

The user will be prompted after each goal.

Except Cancelled Goals

Same as All Goals except ones cancelled.

Don't Record

Will record no goals

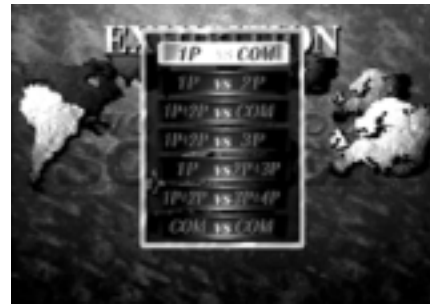
Once the goals have been saved, you can select the Golden Goals option from the main menu.

Scroll to the replay you want to view by hitting up or down and then press the “playback” button. You can also use these replays as attachment files in e-mails to share them with a friend.

Select Screens

Play Type

(Exhibition and Penalty Shoot Out modes)



Select the type of game you play for the mode. Enter or Button 1 to select.

Season Select (World League and Worldwide Cup modes)



From this screen choose to either start a NEW SEASON or CONTINUE one in progress. Press UP or DOWN to highlight and press Enter or Button 1 to select.

Team Select (All play modes and player Edit mode)



Select the team you will guide to victory! For all

play modes against the computer except Worldwide Cup you also select your opponents. For multiple-player games sides select their own teams.

Press the Direction keys to scroll through the regions of the world. When a region is highlighted the teams of the region appear. Press the Direction keys to highlight a team. Should you wish to review team skill levels, press Button 3. After reviewing, return to the main Team Select screen by pressing Button 2.

Press Left or Right to select the highlighted team. Press Button 2 to cancel your selection.

Game Setup (Exhibition and Penalty Shoot Out modes)



In Game Setup choose where and under what conditions you play. On the main screen press

UP or DOWN to highlight and Enter or Button 1 to select.

Game Start heads right to the pitch

Stadium allows you to select where you battle

Environment allows you to select the conditions

Handicap offers several team skill levels for selection

Stadium Select

Press the LEFT or RIGHT to highlight and press Enter or Button 1 to select.



Environment Select

Press UP or DOWN to highlight DAY/NIGHT or WEATHER. Press LEFT or RIGHT to

change the setting. You can play in the day or at night, and in rainy or fine weather. When finished press Enter or Button 1 to confirm.



Handicap

Beginners need not fear playing veterans any longer! Even the chances of winning come into play with this feature.

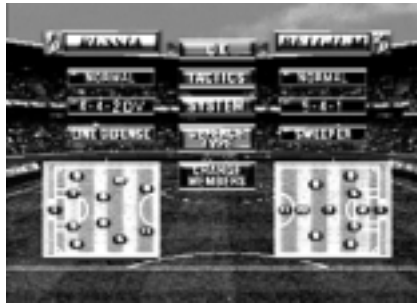


Press the UP or DOWN to set the overall skill level of your team. Five settings are available from LOW to HIGH. Both sides choose a level. Press Enter or Button 1 to confirm.

Changing the Strategy

Main Screen

Displayed are the options default settings for both teams and the strategy options. Press the arrow UP or DOWN to highlight and press Enter or Button 1 to select the options listed below.



OK	Go straight to the kickoff
Tactics	Set overall team playing style
System	Select team play formation
Defense	Select team defense formation
Change Players	Substitute members of your team

Opponent Players

Review the enemy lineup

Tactics

Press Direction keys to highlight and press Enter or Button 1 to select your team's playing style. Choose from the following:

Normal	Right Side Up
Offensive	Left Side Up
Defensive	Center Up
Counterattack	

System



Position the players on the field with this option. Refer to the chart on the following page to help

you make decisions. While scrolling through the formations available (by pressing Direction keys) you can see the formation of your team change. Press Enter or Button 1 to select formation.

System Midfield

Strength

4-4-2

Solid

3-5-2

Solid

4-5-1

Solid

4-3-3 SA

Moderate

3-4-3

Solid

2-3-5

Moderate

4-4-2 DV

Solid

3-5-2 DV

Defensive Forward Line Strength Strength

Solid

Light

Moderate

Light

Solid

Light

Solid

Moderate

Moderate

Moderate

Light

Solid

Solid

Light

Moderate

Solid

4-5-1 DV

Solid

4-3-3

Moderate

3-4-3 DV

Solid

5-4-1

Solid

Light

Solid

Light

Solid

Moderate

Moderate

Moderate

Solid

Light

“DV” formations are especially useful for play up the sides of the pitch

“SA” denotes “South American” style. The 4-3-3 SA formation is a favorite among many South American teams.

Defense Type

Choose either LINE DEFENSE or SWEEPER style for your defense type. Highlight and press Enter or Button 1 to select.

Change Players

Need to substitute a player? Use this option to change the starting lineup before the game or bring a player in during the game. The players bio-rhythms change and are located to the right of their names and represent the following:

Red Triangle

Orange Triangle

Yellow Diamond

Green Triangle

Blue Triangle

is a great player

is a good player

is an OK player

is a not so hot player

Stinks



Press the arrow UP or DOWN to highlight the player to be replaced and press Enter or Button 1 to select. The names of eligible substitutes are listed. Press the arrow UP or DOWN to scroll

through the list of substitutes. Refer to the Player Skills Chart and Player Position Indicator on the screen to help you make the selection. Press Enter or Button 1 to select.

Opponent Players

You can't change the lineup of the opposing team, but you can check to see who is on the team and what skills they possess. Press the arrow UP or DOWN to scroll through the list. Refer to the Player Skills Chart and Player Position Indicator on the screen. This screen appears in human vs. computer games.

Game Play!

Kickoff

Get the ball rolling by pressing Button 2 or pass. Try out moves listed on the next few pages and you'll soon be scoring.



Professional Fouls

Your player is penalized for "dangerous play". Take care when slide tackling from behind and the sides, or your player risks warning or even dismissal from the game.

There are three levels of severity for penalties. In all three cases the fouled player is awarded a Free Kick.

Free Kick

The fouled player is awarded a Free Kick only.

Yellow Card

The offending player is warned. If the same player receives another Yellow Card he is dismissed from the game and can not be replaced.

Red Card

The offending player is immediately sent to the bench and can not be replaced.

If...

Extra Time is set to OFF and Shoot Out is set to OFF

Extra Time is set to OFF and Shoot Out is set to ON

Extra Time is set to ON and Shoot Out is set to ON

Extra Time is set to ON and Shoot Out is set to OFF

Then...

the game ends in a draw.

a Penalty Shoot Out ensues.

a period of overtime is played. If the score is still tied then another period is played. In the event the score is still tied a Penalty Shoot Out ensues.

a period of overtime is played. If the score is still tied then another period is played. In the event the score is still tied the game ends in a draw.

Changing the Player Marker



For more on the Extra Time and Shoot Out options see the Options screen.

The player Marker indicates the player you are currently controlling. Your player closest to the ball is highlighted.

If the Marker option is set to Auto, the Player Marker moves to another player if the other player is closer to the ball than the highlighted player.

For greater challenge, set the Marker option to Manual. Press the Change Player button to move the Player Marker to the next closest player to the ball.

Mastering the Moves

Use this section as a reference when trying out the player moves. After you practice a few of the moves you'll be able to build a deadly arsenal of kicks and other maneuvers guaranteed to leave your opponent scratching his head.

Kicks

Shot on Goal

There are two types of shots you can make on goal: the long shot and the grounder. The long shot is a strong kick useful from inside and outside the penalty box. The grounder is a softer shot, but you might catch your opponent unaware if your opponent is expecting the long shot. Use the grounder at close range.



Press: Button 1 for the long shot, Button 2 for the grounder. The longer you hold down Button 1, the farther it will go.

Pass

The pass travels on the ground a short distance.



Press: Direction keys to set direction, then Button 2 (Pass Button) for the pass.

Lob

Send a high, slow shot in the direction of your choosing. It won't travel as far as when you clear the ball, but you can direct this kick.



Press: Direction keys to set direction then Button 3 (Long Pass Button). The longer you hold down Button 3, the farther it will go.

Chip Kick

Send the ball just over the head of a surprised defender to land at the feet of your teammate.



Press: Direction keys to set the direction, then Button 3.

Clearing

This is a helpful kick when you need to get the ball upfield in a hurry. You can not direct the ball but it will travel a good distance. This kick is also useful for getting the ball out of dangerous places quickly (i.e., in front of your own goal).



Press Button 1.

On Defense

Slide Tackling

Few things are more satisfying than performing a clean tackle and getting the ball back from your opponent. But nothing will get you in more trouble than performing a bad tackle. Perform at your own risk!



Press the Direction keys to set the direction, then Button 1.

Shoulder Charge

Another way to get the ball back is to give your opponent the cold shoulder. You can still get called for rough play but the risk is less. Unfortunately, so is the chance for success. However, all in all it's a useful maneuver.



Press the Direction keys to set the direction, then Button 2.

Keeper

Throughout the match your keeper automatically responds to game action. However you might want to take control of the keeper at times, as your keeper responds faster under manual control.



For manual control of the keeper press Control Goalie key when the keeper appears on the game screen. Press the Direction keys to move the keeper.

Whether you use Control Goalie key or not , when the keeper holds the ball you have manual control. You can then:

Pass or throw to the nearest teammate by pressing Button 2 (pass Button). Kick long by pressing Button 3 (Long Pass Button).

Note: When the keeper dribbles the ball you perform kicks as you do with other players.

Defensive Formation

There are three types of defensive formations your team can assume during play. All it takes is a simple press of the button to execute any of the three.

Pressing

Several of your players crowd the opposing player currently dribbling the ball.

Press the Pressing key to execute this action.

Man-to-Man

Each of your players finds an opposing player to guard.

Press the Man to Man key for this tactic.

Offside Trap

Rob your opponent of a drive to your goal with this move. End result: a Free Kick for you!

Press Offside Trap key to bring your entire defense past the opposing forward line.

Specialty Moves

Free Kick

Your team is awarded one of these if your opponent is guilty of fouling or offsides.



Press the Direction key to set the direction of the kick, then Button 3 for a long kick or shot on goal or Button 2 for a short kick.

Corner Kick

In the event your opponent kicks the ball past his own goal line you are awarded a Corner Kick. Press the Direction keys to set the direction of the kick.



Press:

Button 1 for a low, fast kick to the opponent's goal area

Button 2 for a pass to the nearest player

Button 3 for a lob to the opponent's goal area

Goal Kick

If one of your opponent's players sends the ball past your goal line, you are awarded a goal kick. Your keeper takes the kick.



Press the Direction keys to set the direction for the ball, then press:

Button 2 for a short kick to the nearest player

Button 3 for a long kick upfield

Run Fast

Make your highlighted player sprint by pressing Run Fast key. This is a great move to use when on the offensive.

Penalty Kick

If a player is fouled in the opponent's penalty area, the player is awarded a Penalty Kick.

Taking the Shot

Your chances of making the shot are pretty good, considering the size of the goal. Don't take anything for granted, though. If you always shoot for the same area, you'll become predictable. Vary your shots!

You might be able to surprise your opponent sometimes by not setting a direction with the Button 1. In this case the ball travels straight forward. If the keeper has jumped to the side all he can do is grab for air!



Press the Left or Right keys to direct the kick.

Then press Button 3 for a high kick or **Button 1** for a low kick.

Blocking

The odds aren't in your favor, but that doesn't mean you can't block the shot. If your opponent always shoots to the same side you might be able to anticipate the shot and rob him of a goal.

Should you expect a straight shot you need not press anything. The keeper automatically responds to this type of kick.



Press Button 2 or Button 3 and either LEFT or RIGHT to dive for the ball.

Throw-in



Bring the ball back into play with the throw-in. Press the Direction keys to set the direction of the throw. Next press Button 2 (Pass) for a short throw or Button 3 (Long Pass) for a long one.

Pause Screen

Press F3 or the right mouse button during game play to bring up the Pause screen. From this screen you can change game features.



Below is a list of the Pause screen features. Refer to the list of the Pause screen features. Refer to the list to help you make changes. Press the UP or DOWN to highlight an option. Refer to page 9 for the Option screen.

Replay

Time to play the part of the professional cameraman. Check out the previous play in forward, reverse, or even frame-by-frame! You

can use this at any time during the game. Access the feature by pressing Enter or Button 1. Then press:



- Button 1** to have the clip play in reverse
- Button 3** to have the clip play forward
- Button 5** to have the clip advance a frame
- Button 2** returns you to gameplay

You can also press:

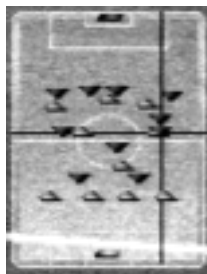
- Left** to rotate the view of the pitch clockwise
- Right** to rotate the view of the pitch counter-clockwise
- Up** to zoom towards the pitch
- Down** to zoom away from the pitch

When finished press Escape key or Button 2 to return to the Pause screen.

Strategy

Access the Strategy screen (pages 17) during the game when the ball is not in play. If you try to access this while the ball is in play the arrows indicate that you need to wait until play is stopped. Access as you did for the Replay option, listed on the previous page.

Radar



Use the radar to bring up a mini-version of the pitch with player locations displayed. Press LEFT or RIGHT to select ON to have the radar displayed or OFF not to have it displayed. This feature is especially useful when first learning how to play the game.

Change Player

With this feature you can select to have the Player Marker change manually or automatically. Refer to the Marker option on the Options screen.

Zoom, View, Audio, BGM

These options are the same as those listed on the Options screen. Press the LEFT or RIGHT to select.

Quit Game

Don't give up the game so soon! But if you must, press Enter or Button 1 when this feature is highlighted. Press LEFT or RIGHT to confirm either YES or NO and press Enter or Button 1 again.

Post-Match Screens

Match Results

(All play modes)

For Exhibition, World League, Worldwide Cup and Cup Tournament modes



This screen displays the final score and scoring per half. Check out the stats for the match you just played. Select:

Match Stats

for team statistics

Goals

for a list of all scorers of the match

Player Facts

for individual statistics of either team's players

Press the UP or DOWN to highlight and Enter or Button 1 to select. When finished press Button 2 or Escape to return to the Match Results main screen.

Match Stats

Highlight the team you wish to review and press Enter or Button 1 to select.



Scroll through the team stats by pressing the UP or DOWN. The following information is listed:

GLS.

(Goals)

SHOT

(Shots on Goal)

ASST

(Assists)

SV.

(Saves)

CUT

(Cuts to avoid defenders)

FLS.

(Fouls)

Y.C.

(Yellow Cards received)

R.C.

(Red Cards received)

Goals



The player who scored and the time during the game they scored are listed on this screen. If a person's name appears flashing, he has earned a Hat Trick.

Player Facts

Select the team to review by pressing the UP or DOWN to highlight, and Enter or Button 1 to Start.

A screenshot of the Player Facts screen. It shows a list of players on the left and their statistics on the right. The statistics are: G (Goals), A (Assists), S (Shots), F (Fouls), and M (Minutes).

	G	A	S	F	M
Jones	0	0	0	5	1
James	0	0	0	-	1
Martinez	0	0	0	-	1
Moore	0	0	0	-	1
Roberts	0	0	0	-	1
Scott	0	0	0	-	1
Hughes	0	0	0	-	1
Walker	0	0	1	-	1
Martin	0	1	0	-	1
Wood	0	1	0	-	1
Evans	1	3	0	-	1

All of the players' names are listed on the left side

of the screen. Scroll through the list by pressing the UP or DOWN. To scroll the stats list press the LEFT or RIGHT.

For Penalty Shoot Out mode



On this version of the Match Results screen you can select GOALS to bring up a list of the kickers' names and the results of the kicks. Press UP or DOWN to highlight, and Enter or Button 1 to Start to select.

On any of the screens press, Button 2 or Escape to return to the Match Results main screen.

Exiting Match Results

When you select EXIT on the Match Results screen the next screen to appear depends on the mode you are playing.

Exhibition

See Going for Another Match (below)

World League	See Saving and Continuing the Season (Pg. 31)
Worldwide Cup	See Saving and Continuing the Season (Pg. 31)
Cup Tournament	See the Playoffs Tree (Pg. 12)
Penalty Shoot Out	See the Playoffs Tree (Pg. 12)

Going for Another Match (Exhibition and Penalty Shoot Out Modes)



PLAY AGAIN? appears with options listed below. Press Start or Enter or Button 1 to select. Choose from:

YES	for another match with the same teams.
Change Teams	The Play Type screen appears for another match.
Game Settings	The Game Setup screen appears to quit the mode.
NO	The mode Select screen appears.

Saving and Continuing the Season (World League and Worldwide Cup modes)

When you select to continue season play after a match finishes SAVE THIS GAME appears with options listed underneath. Highlight YES or NO and press Enter or Button 1 to select.

Option Select (World League and Worldwide Cup modes)

On this screen are listed team names and statistics, and stat options. Press UP or DOWN to scroll through the team names, and LEFT or RIGHT to scroll through the statistics.

TEAM	P	W	D	L	PTS	GF	GA
1 GERMANY	3	1	0	0	3	0	0
2 PORTUGAL	1	1	0	0	3	0	0
3 ROMANIA	1	1	0	0	3	0	0
4 HOLLAND	1	1	0	0	3	0	0
5 BELGIUM	1	1	0	0	3	0	0
6 FRANCE	1	1	0	0	3	2	0
7 SCOTLAND	1	1	0	0	3	2	0
8 WALES	1	0	1	0	1	1	1

To see the stats for a team's players highlight a team and press Button 3. Press Button 2 or Escape to return to the main screen.

You can also use the stat options displayed at the top of the screen. Press the UP or DOWN until NEXT GAME is highlighted. Press the LEFT or RIGHT to highlight, and Enter or Button 1 to access any of the stat options.

For Both Modes

Next Game	Head directly to the next match
Schedule	Check the schedule for the season
Not Usable	Review the list of injured and suspended players

For World League mode only

Goal Ranking	See the leaders in the league for the various categories
Chart	Follow the progression of a team through the season

For Worldwide Cup mode only

League Stats	See the leaders in the league for the various categories
---------------------	--

Trouble Shooting

Question #1: Does Worldwide Soccer require an MMX processor, or will it work on a Pentium processor?

Answer: Worldwide Soccer will work with either an MMX processor in your computer or a native Pentium processor without MMX.

Question #2: After installing the game, I am experiencing Video problems. What could have caused this and how can I fix it?

Answer: What most likely happened is Microsoft's Direct X overwrote your video drivers. Since Worldwide Soccer uses Direct X3, your previous drivers are backed up when it installs new drivers. One way you can restore the drivers is to:

- 1) Double Click on the "My Computer" icon.
- 2) Double Click on the "Control Panel" icon.
- 3) Double Click on the "Add/Remove Programs" icon.
- 4) Choose Direct X Drivers and then hit the Add/Remove Programs Button.
- 5) Click on the "Restore Display Drivers" button.

If this does not fix your video issue, you should download the latest Direct X compatible video drivers from your video card manufacturer's web site.

Here is a list of certain video cards which require special Direct X drivers to be downloaded from your video card manufacturer's web site:

1. Some ATI brand video cards
(www.atitech.com)
2. Chips and Technologies
(www.chips.com)
3. Diamond Multimedia
(www.diamondmm.com)

4. Matrox (www.matrox.com)
5. Number 9 (www.nine.com)
6. Simply the Best (www.stb.com)
7. Silicon Integrated Systems "SiS" (www.sis.com.tw)
8. Tseng Labs (www.tseng.com)

If you have trouble finding Direct X drivers, you can also get drivers at www.drivershq.com (www.drivershq.com) or www.windows95.com.

Question #3: I get sound effects, but no music during gameplay? How do I fix this?

Answer: The music in Worldwide Soccer is CD Audio. You should try to play tracks 2 or higher on the Worldwide Soccer CD-ROM to see if your CD audio is properly set up. If you cannot hear the CD Audio under the Windows 95 CD Player (Start Button ► Programs ► Accessories ► Multimedia ► CD Player), you need to:

- 1) Make sure that the CD Audio volume is not muted (under Windows 95 Volume Control)
- 2) Make sure that your CD-ROM drive is connected to your Sound Card.

Question #4: During gameplay, I get CD Audio, but no Sound Effects. How do I fix this?

Answer:

- 1) Make sure that the Sound Effects volume is not muted (under Windows 95 Volume Control)
- 2) Direct X could have overwritten your Sound Drivers. Since Worldwide Soccer uses Direct X3, your previous drivers are backed up when it installs new drivers. One way you can restore the drivers is to:

- 1) Double Click on the "My Computer" icon.
- 2) Double Click on the "Control Panel" icon.
- 3) Double Click on the "Add/Remove Programs" icon.
- 4) Choose Direct X and then hit the Add/Remove Programs Button.
- 5) Click on the "Restore Audio Drivers" button.

If this does not fix your sound issue, you should download the latest Direct X compatible sound drivers from your sound card manufacturer's web site. Here is a list of certain sound cards which require special Direct X drivers to be downloaded from your sound card manufacturer's web site:

- 1) Aztech Labs - standard in most Packard Bell computers (www.aztechca.com)
- 2) Crystal Semiconductor (www.crystal.com)
- 3) MWAVE (<http://watson.mmb.sfu.ca/new.html>)
- 4) OPTi (www.opti.com) or (<ftp://ftp.opti.com/pub/multimed/>)
- 5) Sound Blaster 64 AWE or Sound Blaster 32 AWE (www.soundblaster.com)

If you have trouble finding Direct X drivers, you can also get drivers at www.drivershq.com or www.windows95.com.

Question #5: I want to play a head to head network game using TCP/IP protocol, but I do not know my IP address. How do I find out my IP address?

Answer: Windows 95 has a built in command called "winipcfg". Go to the Start Button, choose "Run" and then type "winipcfg" and a dialog box will appear with your IP address. The person who creates a new game should enter in the IP address of their computer and the person joining the game should enter in the IP address of the computer where the game was created.

Question #6: I inserted the Worldwide Soccer CD into the drive and am getting a message:

“Line 253 = COMMON...” and the game will not install - what do I do?

Answer: The solution is to download the Windows 95 CD-ROM drivers from your CD-ROM drive either from your CD-ROM manufacturer or from www.windows95.com.

Question #7: How can I optimize Worldwide Soccer to run faster on my PC?

Answer: We have included several PC specific options to allow you to get the best performance possible on the PC. Some ways of making Worldwide Soccer run faster are:

- 1) Make sure you have the proper Direct X video drivers - this is the #1 cause of slow down. (See answer to Question #2)
- 2) Make sure all other programs are closed or disabled.
- 3) Try playing in 256 colors.
- 4) You can toggle from 640X480 resolution to 320X240 low res.
- 5) Turn the Play by Play announcing off.
- 6) Turn off the crowd sound effect.

Question #8: I am having trouble hooking up my gamepad/joy-stick. What do I need to do?

Answer: Worldwide Soccer uses Direct Input, so all you should need to do is properly configure and calibrate your joystick/gamepad under the Joystick icon in the Windows 95 control panel. Once you have done this, start Worldwide Soccer, go to the Options Menu in the menubar and choose “Device Settings.” You can hook up to four Microsoft Sidewinder Gamepads for multi-player action on the same PC. Choose the input method you want to use “Keyboard, Joystick and Keyboard, 2 Joysticks, Microsoft Sidewinder (both Player 1 and Player 2 can play head to head with MS Sidewinder gamepads), etc.

Credits

Sega Entertainment, Inc.

Executive Producer

Matt Wolf

Producer

Scott Hawkins

Product Manager

Jill Braff, Dave Dempsey

Copywriter

Joshua Braff

Typesetter

Cody Gates

Special Thanks

Shinobu Toyoda, Bernie Stolar, Greg Suarez,
Kristi Walker, Sue Price, Eileen Sacman,
Eric Smith, Arvin Carlson

Sega of Japan Credits

Product Director

ASAI, Toshinori

Producer

KOZU, Akira

Assistant Producer

Rich Lloyd

Programmers

TAKEYA, Yasuaki

UEDA, Tensei

SUGITA, Masahiro

WATABIKI, Masaaki

Artists

ARAI, Ryuhei

FUKUMOTO, Hisato

YOSHIMORI, Katsufumi

Sound

MURASAKI, Hirofumi

SENOUE, Jun

OKAMOTO, Seiroh

Commentators

Garry Bloom

Robert Missler

European Product Manager

Hitendra Naik

UK Product Manager

Paul Chapman

Test & Product Support Manager

John Murphy

UK Customer Support

Dave Wilkin