

Microsoft®

Designed for



Microsoft®
Windows®95



MONSTER TRUCK MADNESS™

Down & Dirty Racing!

Information in this document is subject to change without notice. Companies, names, and data used in examples herein are fictitious unless otherwise noted. No part of this document may be reproduced or transmitted in any form or by any means, electronic or mechanical, for any purpose, without the express written permission of Microsoft Corporation.

© 1996 Microsoft Corporation. All rights reserved. Printed in the United States of America.

Microsoft, Monster Truck Madness, Windows, and the Windows logo are either registered trademarks or trademarks of Microsoft Corporation in the US and/or other countries.

Team Credits

Terminal Reality Inc.

Chuck Carson•Brett Combs•Richard Harvey
Grinnel•Draw Haworth•Robert Minnis
Mark Randel•Kyle Richards•Greg Seehusen
Joseph Selinske•Gaither Simmons
Terry Simmons•Tom Wedge

Microsoft Corporation

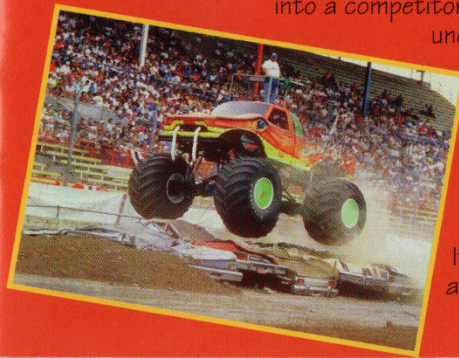
Kate Bigel•Diane Camber•Kate Camber
John Cote•Angel Diaz•Jamie Evans
Shawn Firminger•Lynn Guthrie•Doug Jelen
Matt Johnston•Eric Kruske•Dean Lester
Tom McDowell•Kevin McGrath
Kathryn (Kiki) McMillan•Yasmine Nelson
Sterling Noren•Phil Saitta
John Stephens•Keith Wintraub

GET READY TO DO THE MONSTER MASH!

Microsoft® Monster Truck Madness™ is more than a game; **it's a lifestyle!** Feed the kids, walk the dog, take out the garbage; tell your loved ones you really do love them, because once you hear the wild call of the monster engines, you won't have time for anything else.

Rev your engines, people! Get ready to do the Monster Mash! Enter a world in which you match wits and nerve against the likes of Bigfoot, Snake Bite, and the Carolina Crusher.

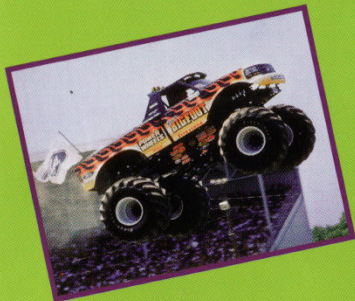
Experience the adrenaline-pumping drags. Get up and dust yourself off when you blow it in the circuits. Feel the cab shake as you slam into a competitor, suffer the jarring panic of an uncontrollable skid, **risk it all** in a rally to the death.





If you really want to have some fun, design your own tournament. You pick the events, the courses, and may the best driver win!

It's crush-or-be-crushed time, boys and girls! **This is as real as it gets!**

STARTING MONSTER TRUCK MADNESS

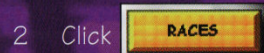


- 1 Click  **Start**
- 2 Point to **Programs**, and then point to **Microsoft Games**.
- 3 Click 



STARTING A RACE

- 1 On the Monster Truck Madness opening screen, in the **Driver's Name** box, type or select a name, and select a skill level.



- 2 Click **RACES**.
Monster Truck Madness displays the **Races** screen.

- 3 Select the truck you want to drive, and then select the type of race you want to run.

Monster Truck Madness displays the appropriate race screen with opponents already added.

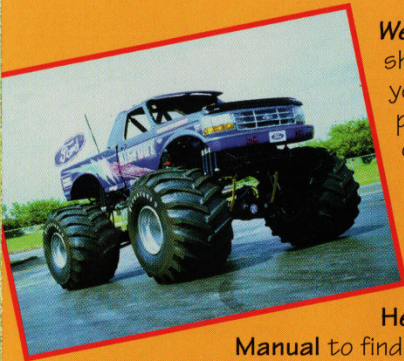
- 4 Click the name of each truck you want to compete against, and then click **Add** to add the highlighted truck to the **Competing Trucks** list. Or click **Remove** to delete a truck from the **Competing Trucks** list.

- 5 Click the name of the track you want to race on, and, if racing a circuit, specify the number of laps.



- 6 Click **RACE**.

ANSWER ME THIS...



We all have questions in life. Don't be shy if *Monster Truck Madness* stumps you. Help is at hand. We've consulted professional drivers and tried to put ourselves in your shoes—rookie or pro—to provide the help you need.

Whether you're wondering how to stage for a drag race, or wanting to host a multiplayer game, click the

Help menu, and then click **Monster Manual** to find the answers you're looking for.

Can't figure out how to use an option in a dialog box or screen? Click the option with the right mouse button. **Pop-up Help** responds with just the information you need.

The racing events screens have additional help for drivers.

For the lowdown on a particular race course, click

Zoom

To find out about strategies for each race type, click

Tips

MONSTER TRUCK WEB STOP

If you race to win, you'll *get the edge you need* at the Monster Truck Web Stop!

Check in at the Monster Truck Web Stop to *learn driving tips from professional drivers* and to download videos and photographs of monster trucks in action. Follow the professional monster truck tour and get up-to-date race results and standings.

You can visit the Monster Truck Web Stop from the game's opening screen.

To visit the Monster Truck Web Stop

On the game's opening screen, click **Monster Truck Web Stop**.

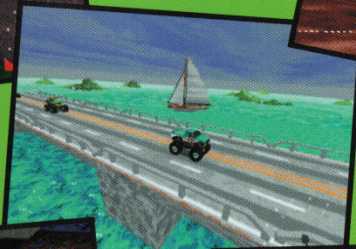
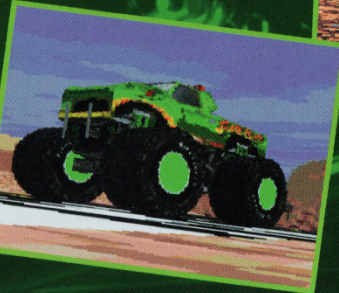
—OR—



If you've gone past the opening screen, click **Back** until you've backtracked to the opening screen, and then click **Monster Truck Web Stop**.

THE TRUCKS

Feast your eyes on these monsters. In *Monster Truck Madness*, you drive the same trucks the professionals drive.



THE TRACKS






Whether you race circuits, rallies, or drags, these tracks will challenge your best moves.



CONTROLLING YOUR TRUCK

These tables tell you how to control your truck when it's set to automatic transmission (Auto Shift). For a complete list of all the game controls, click the **Help** menu, and then click **Game Controls**.

Driving in Automatic Transmission Using the Keyboard



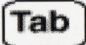


To Make the Truck...	Hold Down the...
Accelerate	
Brake	
Reverse	 After making a complete stop, the truck shifts into reverse.
Turn right	
Turn left	

Driving in Automatic Transmission Using the Joystick

To Make the Truck...	Do this...
Accelerate	Push forward.
Brake	Pull back.
Reverse	Pull back. After making a complete stop, the truck shifts into reverse.
Turn right	Push right.
Turn left	Push left.

NOTE: For information on driving with a steering wheel or gamepad, click the **Help** menu, and then click **Game Controls**.

Other Useful Game Controls

Summon the rescue helicopter.	
Display the Directional Finder to see where the next checkpoint is.	
Display overlay map of the race.	
Return to cab view from any game view.	 + 

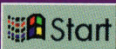
INSTALLING MONSTER TRUCK MADNESS



- 1 Turn on your computer and start Microsoft® Windows® 95 or later.
- 2 Place the Monster Truck Madness disc in the disc holder (if required), then insert it in your CD-ROM drive.

Installation begins immediately. Follow the instructions on the screen.

If your CD-ROM drive does not support automatic installation, follow the steps below:

- 1 Click  Start™
- 2 Point to **Settings**, then click **Control Panel**.
- 3 Double-click **Add/Remove Programs**.
- 4 On the **Install/Uninstall** tab, click **Install**.
- 5 Follow the instructions on the screen.



* 9 1 5 1 4 *