

MISSION FORCE™

CyberStorm™



836834330/5683150



SIERRA®



SIERRA®

MISSIONFORCE™
CyberStorm™



Installation Guide

Contents

About This Manual	2
Installing and Starting the Game	3
Troubleshooting	4
Technical Support	5
Customer Service	8

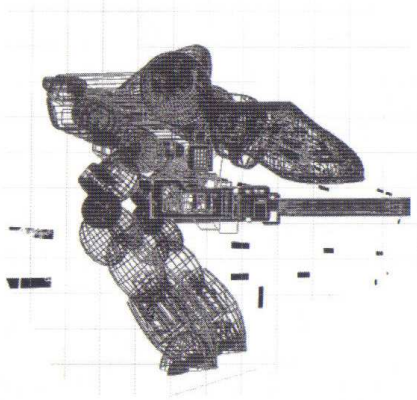
About This Manual

Welcome to the *CyberStorm* Installation Guide. This booklet shows you how to get the game installed and running.

For fast look-up of game commands, see the **Quick Reference Card**.

For detailed game play information, start the game and open the **On-Line Manual**. You can open this built-in help system with the On-Line Manual button on the Main Menu, or by clicking the ? button or pressing the ? key anywhere in the game.

Joysticks in Windows 95 are configured in the Win95 Control Panel.



Installing and Starting the Game

Installing the Game

1. Start Windows 95.
2. Insert the *CyberStorm* CD into the CD-ROM drive.
3. When the *CyberStorm* setup screen appears, follow the on-screen instructions.

Starting the Game

1. Start Windows 95.
2. Insert the *CyberStorm* CD into the CD-ROM drive.
3. Select the Start Game option when it appears

Additional Setup Help

During installation, TEST SYSTEM checks to make sure your computer can run the game correctly.

If you have trouble installing or starting *CyberStorm*, open the *CyberStorm* README file in the Sierra program group or folder or on the CD.

After game installation, the "Setup" program in the Sierra program group or folder lets you re-install the game, re-test your computer, uninstall the game, register, or view detailed Support and Setup Help information. To start it, just double-click on the Setup icon.

Troubleshooting

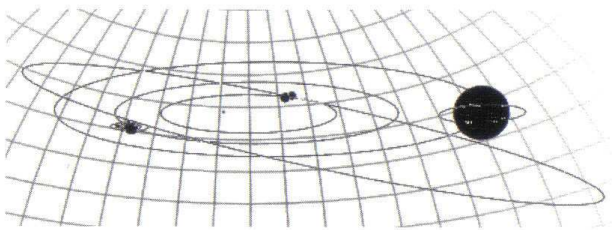
Error Messages

General Protection Fault: Try updating both your Windows Video Driver and your Windows Sound Card drivers. Contact your video card and sound card manufacturer for more information.

Not Enough Memory to Run This Application: Try closing all other programs or screen savers before launching *CyberStorm*.

Other Problems

If you have already looked at the *CyberStorm* README file, check out the on-line Setup Help. To open this, double-click on the "Setup" program in the Sierra program group or folder. Click SUPPORT, and then CONTENTS to find help on your specific system component or problem.



Technical Support

If you need additional help installing or using your Sierra product, and can't find the answer in this guide or in the README file, contact the Technical Support Department. You may call, write, fax, or contact us on one of the major on-line services that Sierra supports. (For sales information, back orders, returns, technical support in Europe, or other information, see the Customer Service section in this manual.)

Our Automated Technical Support line at (206) 644-4343 is available 24 hours a day, and provides recorded answers to the most frequently asked questions. Follow the recorded instructions to find your specific topic.

If you can't resolve your problem through the Automated Support line, you can contact our Technical Support representatives directly. If you choose to write or fax us, please provide detailed information on your computer system and the nature of your problem. In addition, please include your address and telephone number should we need to call back or send you information.

U.S. Technical Support

Sierra On-Line
Technical Support
P.O. Box 85006
Bellevue, WA 98015-8506

Call (206) 644-4343
Fax (206) 644-7697
8:15 a.m.– 4:45 p.m. PST, M-F
(Automated Support is always available.)

Technical Support is also available through:

Internet: <http://www.sierra.com> (Sierra Web Site)
CompuServe: GO SIERRA
America Online: Keyword SIERRA

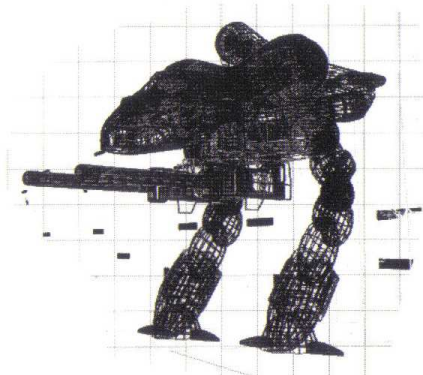
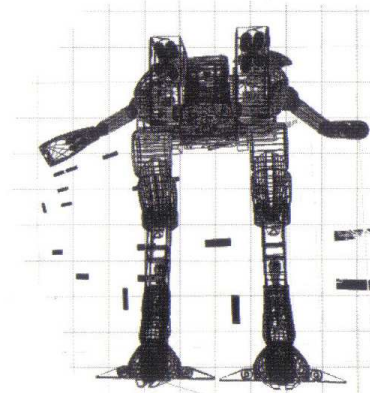
Sierra on CompuServe

Sierra offers technical support and patch files on its CompuServe forum, as well as product demos, hints, and reviews. CompuServe members can type GO SIERRA to reach the forum. To join CompuServe, call toll-free (800) 848-8199 and ask for Representative 461 for your FREE introductory membership and usage credit.

Patch Disks

If you have learned of a patch (update) disk for your game, send in your request to the address below. When writing, note the game, version number (VER# on game disk(s)), and disk type.

Sierra On-Line
Patch Disks
Dept. 10
P.O. Box 485
Coarsegold, CA 93614-0485



Customer Service

The best customer service in the industry.

“You don’t just buy our games – you buy the support of the whole company.”

— Ken Williams, CEO, Sierra On-Line, Inc.

Sierra On-Line guarantees your satisfaction with any question or problem concerning our games. Contact the following customer service centers for direct sales and general game information. In the U.K. and Europe, use these contacts for replacement CDs and Technical Support as well.

United States

Sierra On-Line
Direct Sales
P.O. Box 3404
Salinas, CA 93912

(For U.S. technical support,
see page 6.)
Call (800) 757-7707
Fax (408) 644-2018

United Kingdom

Sierra On-Line Limited
4 Brewery Court,
The Old Brewery,
Theale, Reading, Berkshire
RG7 5AJ United Kingdom

Call (44) 1-734-30-3171
Fax (44) 1-734-30-3362
9:00 a.m.– 5:00 p.m.,
Monday – Friday

France

Parc Tertiaire de Meudon
Immeuble “Le Newton”
25 rue Jeanne Braconnier
92366 Meudon La Forêt Cedex
France

Call (33)1-46-01-4650
Fax (33)1-46-31-7172
Hint line (33)1-36-68-4650

Germany

Sierra Coktel Vision Deutschland
Robert-Bosch Str. 32
D-63303 Dreieich
Germany

Call (49) 06103-994040
Fax (49) 06103-994035

Other Countries

Sierra On-Line
International Direct Sales
P.O. Box 3404
Salinas, CA 93912-3404
U.S.A.

(Direct Sales and
Information Only)
Main (206) 746-5771
Fax (408) 655-6179

The Sierra No-Risk Guarantee!

THE PROMISE: We want you to be happy with every Sierra product you purchase. Period. Complete and return the enclosed owner registration card, and we'll be able to serve you better. If you're unhappy with one of our software products *for any reason*, you can return it for an exchange or refund within 30 days of purchase. (If it was purchased retail, please include the *original* sales receipt.)

THE ONLY CATCH: You have to tell us why you don't like it, so we can improve. If you send it back and tell us why, we'll do our best to make you happy.

If your Sierra software fails within 90 days of purchase, we'll replace it free of charge. Return the CD directly to us with a copy of your sales receipt. After 90 days, include the replacement fee: \$10.00 in U.S.; £6.00 in U.K., £7.00 outside U.K. Note: this policy applies to the original owner only. In the U.S., send Replacements>Returns to:

Sierra On-Line Fulfillment (For Returns, add ATTN: Returns)
P.O. Box 485
Coarsegold, CA 93614

IT IS ILLEGAL TO MAKE UNAUTHORIZED COPIES OF THIS SOFTWARE

This software is protected under federal copyright law. You may make one backup copy for archival purposes only. Duplication of this software for any other reason including for sale, loan, rental or gift is a federal crime. Penalties include fines as high as \$50,000 and five years in federal prison.



S I E R R A[®]

Sierra supports the industry effort to fight the illegal copying of personal computer software. Report Copyright Violations To:
SPA, 1730 M Street N.W. Suite 700, Washington, D.C. 20036
(202) 452-1600

This manual, and the software described in this manual, are copyrighted. No part of this manual or the described software may be copied, reproduced, translated or reduced to any electronic medium or machine-readable form without the prior written consent of Sierra On-Line, Inc. 3380 146th Place SE, Suite 300, Bellevue, WA 98007.

Some sound effects used in this product were derived from the Sound Ideas[®] sound effects library. For more information, Sound Ideas can be reached at: U.S. (800) 387-3030; Canada (800) 665-3000; (416) 886-6800 Fax

IBM®, PC® are trademarks of International Business Machines Corporation. Microsoft®, MS-DOS®, Windows™, Windows 95™, are trademarks of Microsoft Corporation. Sound Ideas is a registered trademark of the Brian Nimens Corporation, Ltd. Other ® and TM designate trademarks of, or licensed to Sierra On-Line, Inc. © Sierra On-Line, Inc. 1996. All rights reserved. Printed in the USA.

Limitations on Warranty

UNAUTHORIZED REPRESENTATIONS: SIERRA WARRANTS ONLY THAT THE PROGRAM WILL PERFORM AS DESCRIBED IN THE USER DOCUMENTATION. NO OTHER ADVERTISING, DESCRIPTION, OR REPRESENTATION, WHETHER MADE BY A SIERRA DEALER, DISTRIBUTOR, AGENT, OR EMPLOYEE, SHALL BE BINDING UPON SIERRA OR SHALL CHANGE THE TERMS OF THIS WARRANTY.

IMPLIED WARRANTIES LIMITED: EXCEPT AS STATED ABOVE, SIERRA MAKES NO WARRANTY, EXPRESS OR IMPLIED, REGARDING THIS PRODUCT. SIERRA DISCLAIMS ANY WARRANTY THAT THE SOFTWARE IS FIT FOR A PARTICULAR PURPOSE, AND ANY IMPLIED WARRANTY OF MERCHANTABILITY SHALL BE LIMITED TO THE NINETY (90) DAY DURATION OF THIS LIMITED EXPRESS WARRANTY AND IS OTHERWISE EXPRESSLY AND SPECIFICALLY DISCLAIMED. SOME STATES DO NOT ALLOW LIMITATIONS ON HOW LONG AN IMPLIED WARRANTY LASTS, SO THE ABOVE LIMITATION MAY NOT APPLY TO YOU.

NO CONSEQUENTIAL DAMAGES: SIERRA SHALL NOT BE LIABLE FOR SPECIAL, INCIDENTAL, CONSEQUENTIAL OR OTHER DAMAGES, EVEN IF SIERRA IS ADVISED OF OR AWARE OF THE POSSIBILITY OF SUCH DAMAGES. THIS MEANS THAT SIERRA SHALL NOT BE RESPONSIBLE OR LIABLE FOR LOST PROFITS OR REVENUES, OR FOR DAMAGES OR COSTS INCURRED AS A RESULT OF LOSS OF TIME, DATA OR USE OF THE SOFTWARE, OR FROM ANY OTHER CAUSE EXCEPT THE ACTUAL COST OF THE PRODUCT. IN NO EVENT SHALL SIERRA'S LIABILITY EXCEED THE PURCHASE PRICE OF THIS PRODUCT. SOME STATES DO NOT ALLOW THE EXCLUSION OR LIMITATION OF INCIDENTAL OR CONSEQUENTIAL DAMAGES, SO THE ABOVE LIMITATION OR EXCLUSION MAY NOT APPLY TO YOU.

YOU ARE ENTITLED TO USE THIS PRODUCT FOR YOUR OWN USE, BUT MAY NOT SELL OR TRANSFER REPRODUCTIONS OF THE SOFTWARE, MANUAL, OR BOOK TO OTHER PARTIES IN ANY WAY, NOR RENT OR LEASE THE PRODUCT TO OTHERS WITHOUT PRIOR WRITTEN PERMISSION OF SIERRA. YOU MAY USE ONE COPY OF THE PRODUCT ON A SINGLE GAME MACHINE, COMPUTER, OR COMPUTER TERMINAL. YOU MAY NOT NETWORK THE PRODUCT OR OTHERWISE INSTALL IT OR USE IT ON MORE THAN ONE GAME MACHINE, COMPUTER, OR COMPUTER TERMINAL AT THE SAME TIME.