

Designed for

Microsoft®
Windows 95

Microsoft
Home

CD-ROM
Version
2.0

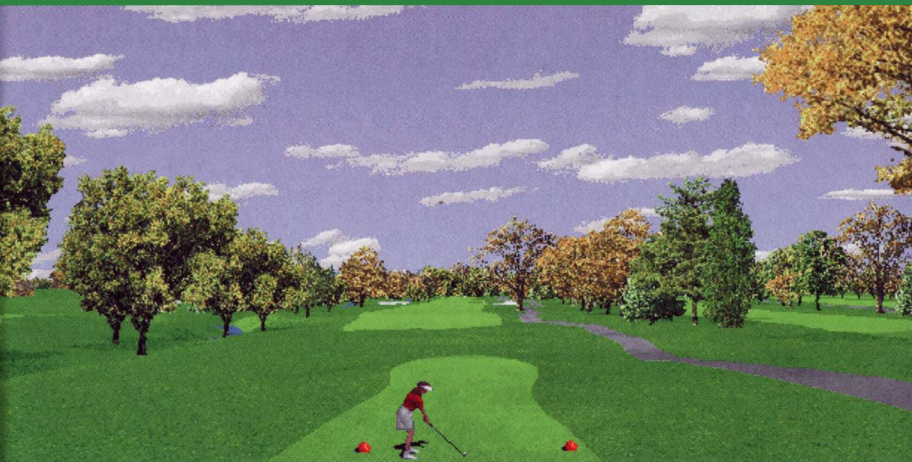
Microsoft
GOLF


PLAYERNET

Multiplayer Gaming
for Windows 95

The True Challenge of Golf for Windows®

Getting Started



Microsoft® Golf for Windows® CD-ROM Version 2.0

The True Challenge of Golf for Windows

Information in this document is subject to change without notice. Companies, names, and data used in examples herein are fictitious unless otherwise noted. No part of this document may be reproduced or transmitted in any form or by any means, electronic or mechanical, for any purpose, without the express written permission of Microsoft Corporation.

© 1992–1995 Microsoft Corporation. All rights reserved.

© 1995 Access Software, Inc. All rights reserved.

Printed in the United States of America.

Microsoft, MS-DOS, PlayerNet, Windows, the Windows logo, and Windows NT are either registered trademarks or trademarks of Microsoft Corporation in the U.S. and/or other countries.

Access Software Incorporated is a registered trademark of Access Software, Inc.

CompuServe is a registered trademark of CompuServe, Inc.

Document No. CD-000-17178





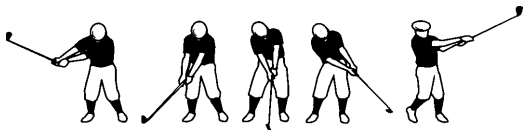
Welcome to Microsoft® Golf for Windows® CD-ROM Version 2.0!

In this hands-on, state-of-the-art golf simulation, Microsoft combines the Windows graphical environment with Access Software's expertise and experience in golf simulations. The result is awesome realism on actual championship courses from around the world. Whether you are a golf neophyte, a hacker, or an experienced duffer, you will be amazed by the quality of play.

In addition to this *Getting Started* booklet, Microsoft Golf includes the following items to help you play your best games:

- An introduction to Microsoft Golf to get you playing quickly
- The Player's Guide, a comprehensive online Help program that contains step-by-step procedures and lets you quickly get the answers to your questions at any time during a game
- Aim and swing video demonstrations to help you refine your game-playing techniques

Finally, you'll be able to get in 18 holes at home or in your office, but reaching that 10-under-par round is completely up to you!



System Requirements

Minimum hardware and software required to run Microsoft Golf

- 386dx central processing unit (CPU)
- 8 megabytes (MB) of random-access memory (RAM)
- Super VGA 256-color display
- Microsoft Windows 95 or MS-DOS version 3.1 or later with Microsoft Windows version 3.1 or later (running in enhanced mode)
- CD-ROM drive
- Sound card and speakers to enable sound
- Microsoft Mouse or compatible pointing device

Note: Windows 95 is required to run PlayerNet.





Installing Microsoft Golf

You can conduct a Typical or Custom installation. A Typical installation places most of the Microsoft Golf components on your hard disk. A Custom installation lets you choose which components are placed on your hard disk and which you will access from the CD-ROM disc. See “Installation Questions and Answers” on page 13 for more information on Typical and Custom installation options.

If you are using Windows 95

1. Turn on your computer.
2. Place the Microsoft Golf disc in the disc caddy (if required) and insert it into the CD-ROM drive. The disc will start automatically.
3. Follow the instructions that appear on the screen.

If you are using Windows version 3.1 or later

1. Turn on your computer and start Windows.
2. Place the Microsoft Golf disc in the disc caddy (if required) and insert it into the CD-ROM drive.
3. Open the Program Manager window (if necessary), click the File menu, and then click the Run command.
4. In the Command Line box, type the letter of your CD-ROM drive, a colon, a backslash, and the word *setup* (for example, type **d:\setup**).
5. Click OK, and follow the instructions that appear on the screen.

Starting Microsoft Golf

If you are using Windows 95

- Place the Microsoft Golf disc in the disc caddy (if required), insert it into the CD-ROM drive, and follow the instructions that appear on the screen.
—or—
- Click the Start button on the Windows taskbar, point to Programs and then to Microsoft Sports, and click Golf CD.

If you are using Windows version 3.1 or later

1. Place the Microsoft Golf disc in the disc caddy (if required) and insert it into the CD-ROM drive.
2. From the Program Manager window, double-click the Microsoft Golf icon. The icon is in the Microsoft Sports group window or in the group window that you specified during Setup.

Note: Microsoft Golf might pause to analyze your system before starting. If Golf fails to start, see “Troubleshooting” on page 11.





Starting a Game

When Microsoft Golf starts, you'll see the Welcome To Microsoft Golf dialog box.



- Click Quick Start to start a game using the default settings or the settings from your last game.
- Click New Game to start a game with new settings.
- Click Resume Previous Game to resume playing a saved game.
- Click Practice to practice your shots without playing a game.
- Click PlayerNet when you want to play a game with other players who are each using their own computer.

You can also choose all these options from the Game menu.

Using PlayerNet

With PlayerNet, you can enjoy an interactive, multiplayer game of Microsoft Golf without leaving the comfort of your chair. You can connect to other computers, invite friends to join you in a game, and compete with your golfing buddies.



To use PlayerNet, each computer must have Windows 95 or Windows NT Workstation version 3.51 or later, PlayerNet, and Microsoft Golf for Windows CD-ROM version 2.0.

Starting PlayerNet Before Starting Microsoft Golf

1. Click the Start button on the Windows taskbar, point to Programs and then to Microsoft Games, and click PlayerNet.
2. Type your name in the PlayerNet Logon dialog box, type a password and a daily announcement (if you want to), and click OK. The PlayerNet window appears and you can now put your golf party together.

Starting PlayerNet from Microsoft Golf

1. Click the PlayerNet button in the Welcome To Microsoft Golf dialog box.
—or—
Choose PlayerNet from the Game menu.
2. Type your name in the PlayerNet Logon dialog box, type a password and a daily announcement (if you want to), and click OK. The PlayerNet window appears and you can now put your golf party together.





Putting Your Golf Party Together

You can establish connections to other computers and invite other players to join your party or you can join an existing party in the PlayerNet window.

- Use the Connections dialog box to connect to other computers.
- Decide who will host the game. Invite players to your place to host the game or join other players at someone else's place.
- When the host starts the game from the PlayerNet Game dialog box, all the players can use PlayerNet's Chat feature to agree on the course and game settings.

Getting Help on PlayerNet

For more information on using PlayerNet, do any of the following:

- In the PlayerNet window, choose Help Topics from the Help menu.
- In any PlayerNet dialog box, position the mouse pointer over an option and click the right mouse button to see information on the option.
- In the Microsoft Golf Player's Guide, see "Using PlayerNet for Multiplayer Games."

Learning the Game

Microsoft Golf provides a variety of ways for you to get the maximum enjoyment from our games of Golf.

When you start Microsoft Golf, click the Demos button in the Welcome To Microsoft Golf dialog box to view the following:

- A short introduction on how to play Microsoft Golf
- **Aim Demo:** A video demonstration on how to aim your shot
- **Swing Demo:** A video demonstration on how to swing with maximum control and accuracy

Use the Player's Guide for comprehensive information about playing Microsoft Golf.

- Browse through the Player's Guide Contents to find topics on every aspect of the game.
- Search through the Player's Guide for information on specific parts of the game.
- Take the golf lessons to learn how to improve your game.
- Use the Glossary for definitions of terms.





Learning the Courses

Microsoft Golf comes with two courses: Torrey Pines and Firestone South. You can obtain other courses from Microsoft or you can use Links 386 Pro courses from Access Software, Inc.

Courses designed for Microsoft Golf for Windows CD-ROM version 2.0 include the following video presentations to help you learn the course:

Course Tour: A narrated tour of the course and surrounding area

Fly By: An aerial view of the hole you are playing, starting at the tee, continuing along the fairway, and ending at the green

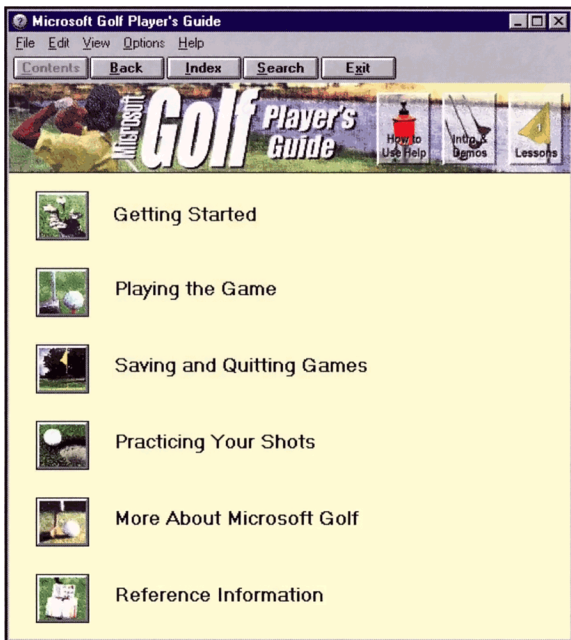
Tip: Tips from the pros on the best way to play each hole

When you are playing a game, you can also view the layout of the course by displaying the Top View.

For information on installing additional courses, see “Installing Courses” in the Player’s Guide.

Getting Help

The Microsoft Golf Player's Guide is an extensive online Help system





Using the Microsoft Golf Player's Guide

From the Golf Help menu, choose Player's Guide to view the Microsoft Golf Player's Guide Contents.

You can also get help by choosing the Help button that's available in most Microsoft Golf dialog boxes. The Player's Guide displays information about making settings and choosing options in that dialog box and directs you to related information.

To learn more about using the Player's Guide, choose the How To Use Help button, located at the top of the Player's Guide Contents.

Troubleshooting

If you have a problem installing Microsoft Golf, refer to the README.TXT file on your Microsoft Golf CD-ROM disc.



If you have a problem while playing the game, refer to the "Troubleshooting" section of the Player's Guide.





Installation Questions and Answers

Q. When I inserted the Microsoft Golf disc in my CD-ROM drive, there was a pause, and suddenly the program started running. What's going on?

A. Windows 95 has a feature called AutoPlay that automatically starts a program when the disc is inserted into the CD-ROM drive. You can disable AutoPlay by holding down the Shift key when you insert the Microsoft Golf disc into the CD-ROM drive. You can also disable AutoPlay for your Microsoft Golf CD-ROM disc from within the Microsoft Golf game by choosing the AutoPlay command from the Options menu. Earlier versions of Windows do not have the AutoPlay feature.

Q. I installed Microsoft Golf earlier, but now I want to add some components and delete others. How do I do this?

A. You need to run the Setup program again. First, insert the Microsoft Golf CD-ROM disc into your CD-ROM drive.

If you are using Windows 95, double-click My Computer, and then double-click Control Panel in the My Computer window. In the Control Panel window, double-click the Add/Remove Programs icon, and follow the instructions on the Install/Uninstall tab of the Add/Remove Programs Properties dialog box.

If you are using an earlier version of Windows, rerun the Setup program from Program Manager as described in "Installing Microsoft Golf" on page 3.

Q. I did a Typical installation of Microsoft Golf, but I still can't run the Tips or Fly By videos from the Swing Control dialog box. Why not?

A. The video files for the Tips and Fly Bys are stored on your Microsoft Golf CD-ROM disc. To view them, you must have the disc in your CD-ROM drive.

If you conducted a Custom installation, you might need to have the Microsoft Golf CD-ROM disc in your drive to view the Aim Demo, Swing Demo, Introduction To Microsoft Golf, Golf Lessons, and the Microsoft Golf Player's Guide.

Q. I installed PlayerNet but it doesn't work. What's going on?

A. To run PlayerNet, you and anyone you want to connect to must *each* be running Windows 95 or Windows NT Workstation version 3.51 or later, and have Microsoft Golf for Windows CD-ROM version 2.0 installed. You also need appropriate connecting equipment installed. If your equipment is properly configured and you still cannot run PlayerNet, see PlayerNet Help..



