

# The PSYCHOTRON

DOMINATE THE MIND... DOMINATE THE WORLD!

USER'S GUIDE

AN INTERACTIVE MURDER MYSTERY

## Installation and Start-up

### To Install The Psychotron:

1. Start Windows, if it is not already running.
2. Insert The Psychotron disc into the CD-ROM drive.
3. From the File Menu, Choose Run.
4. Type D:\INSTALL.EXE (if necessary, replace D: with the letter that represents your CD-ROM drive) in the Command Line and press ENTER. The Psychotron setup program will begin.

The Psychotron setup program will prompt you for a drive and directory path where you would like to store The Psychotron files on your hard drive. The setup program will create a Psychotron folder and an icon for running the program.

### To Start The Psychotron:

1. Make sure the The Psychotron disc is in your CD-ROM drive.
2. Start Windows.
3. Double click the Psychotron icon in the Psychotron folder.

If you are having difficulty installing or running The Psychotron, please refer to the Troubleshooting Information on page 8 in this User's Guide before calling our

technical support number. Most of the technical problems you may encounter when installing and running The Psychotron will be related to hardware issues. By reading the Troubleshooting Information before calling, you may be able to solve on your own any difficulty that you are having. If, after reading this information and contacting your hardware manufacturer, you are still having problems running The Psychotron, please contact Merit's Technical Support Department (Please refer to the section entitled Customer Service in the back of this User's Guide for contact information).

### Recommended System Configuration

- A 486SX - 25 MHz or greater IBM or IBM compatible with 4MB of RAM (8MB recommended)
- An MPC 2 compatible CD-ROM drive ( 2X speed CD-ROM is required )
- 8 Megabytes free hard disk space
- A Super VGA graphic display
- A Microsoft compatible mouse or other pointing device
- Windows 3.1 or higher
- DOS 5.0 or higher
- Windows-compatible sound card (8-bit or 16-bit)

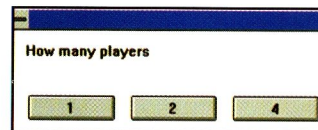
Your Mission. C.I.A. Director Darin Bird has commissioned you to perform an internal investigation into a C.I.A. mishap which may have been deliberately created by an inside source. A Psychotronic Generator purchased by the U.S. from the former Soviet Union has mysteriously vanished from a deadly C.I.A. plane wreck, causing a major breach of national security! The future of the nation depends on you. Working covertly, you must interview likely suspects, search for clues, and face down unsavory characters in order to solve the case.

## Beginning a New Game



To begin a new game, click on the New Game button in the Main Menu at the top of the title screen. Additionally, you may choose to pause the midi music on video play or turn off the midi music entirely.

### Selecting the Number of Players



Once you have chosen to begin a new game, you have the option of playing with 1, 2, or 4 players. The Psychotron's unique scoring system allows multiple players to participate together in the interactive experience. (Please refer to the sections entitled Multiple Players and The Scoring System for more information.)

### Introductory Sequence

Following a brief animation sequence, you will enter the offices of C.I.A. Director Darin Bird, where you will receive your instructions.



# The Psychotron Interface

## Reviewing Video Sequences

You may review a video sequence by clicking on one of the two buttons located on the review panel.




Click this button to review the video sequence in the standard video window.

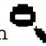


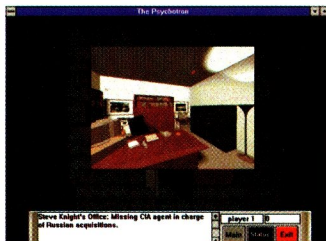
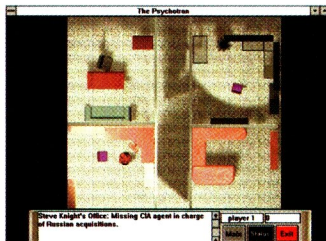
Click this button to review the video sequence in full screen mode.

## Searching for Clues in 3D Rooms

When you pass the mouse cursor over a 3D floor plan, the mouse cursor changes to a question mark. Clicking on a particular room on the  map takes you into that room.

Once inside a room, move the cursor around the screen to find clues. The cursor will show a question mark when a clue is available. Click on the clue to zoom in and gather information.

At the bottom of a room or a zoomed in view of a clue, the cursor will change to a magnifying glass with a minus sign. Click the left mouse button  to zoom out of the room or clue.

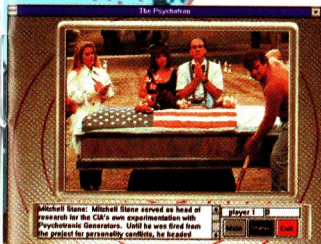


If you move your cursor to the left and right of a 3D floor plan, the cursor will change to magnifying glass with a minus sign. By then clicking the left mouse button you will be able to exit the 3D floor plan and continue to the next part of the game.

## Interacting with Characters

Be sure to read all of the information provided in the information boxes at the bottom of your screen as you move your cursor over a character or discover a clue.

To engage a character in conversation, click on a character when your cursor has changed to a question mark.



You have four chances to talk to a character. (You can talk to the same one four times if you prefer.)

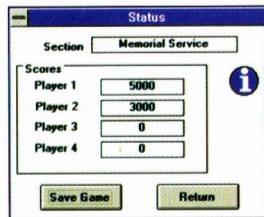
Your remarks to the character show up on the gray panel in the upper right hand part of the screen. Click on a remark to activate it.

Please Note: When playing a hand of cards in the card game sequence, the cards appear after you have been dealt the hand. You may click on your down card to see what it is. You will make your playing decisions on the gray panel in the upper right hand corner of the screen.



### The Information Panel

Click on Main to return to the Main Menu to start a new game or restore a previously saved game.



Click on Status to review scores for multiple players and to save the current game. (Hint: Save games often.)



Click on Exit to quit the application altogether.

### Multiple Players

For a brief moment the creator of The Psychotron had a flash of conscience. He decided not to perpetuate the vision of a ten-year-old sitting alone in front of a computer for twelve hours a day drinking some artificially flavored drink and then trying to bribe someone with game cartridges to kill a classmate. So, it is valuable to play with others rather than just playing with yourself.

Watch the player box on your information panel. It will tell you when to change players. You should appoint someone to be player "1" to manage game navigation and take notes.



### The Scoring System

The Psychotron keeps score based on good, educated questioning. Each character that you may encounter has a maximum score associated with him or her. In each scene, every player has an opportunity to score the same amount of points. If you die, all of your points are taken away. At the end of the game, the player with the most points plays the last scene.



## Troubleshooting Information

### Memory

If you are running The Psychotron on a 4 MB system you may encounter problems if you are using SMARTDRV. SMARTDRV, which is loaded from your AUTOEXEC.BAT file when DOS starts on your computer, reserves memory which becomes unavailable to The Psychotron.

Memory problems may cause the screen to “freeze” up or may cause an error to display on the screen during game play. These problems will go away if you temporarily disable SMARTDRV in your AUTOEXEC.BAT file and reboot your computer.

To disable SMARTDRV, use any text editor (such as notepad in your Windows Accessories group) and type in “REM “ prior to the line that loads SMARTDRV in your AUTOEXEC.BAT file.

It should look like this:

```
REM C:\DOS\SMARTDRV.EXE
```

### Performance Considerations

The Psychotron has been developed for use with Video for Windows version 1.1a and has installed the runtime of this version onto your hard drive. Video for Windows performance is based on a combination of factors that include: Your system's CPU speed, CD-ROM drive, the amount of RAM on your system, and your video graphic card.

### Display Drivers

The Psychotron will perform optimally on a graphics display running in 640x480 mode with 256 colors. If you are running The Psychotron on a display set to a

higher resolution or more colors and you are having difficulty running the program, you may wish to switch to 640x480 256 colors. If you are having any problems with your display while running The Psychotron, be sure and check to make sure that the proper device driver is installed. You can check this information using the Windows Setup Program. You can also use this program to update your display driver if it is not the most current version. All of the video files with audio have a data transfer rate below 145 Kilobytes/second. However, performance of this video may be slowed by factors other than your CD-ROM drive. The most common culprit is the video driver supplied by the manufacturer of your video card. Please make sure that you have the latest update from the manufacturer. If you need an update, ask if the driver is compatible with Microsoft's Video for Windows.

### Running Vidtest

The Vidtest utility is provided to you for testing the various components of your system and measuring their ability to play Video for Windows. VIDTEST.EXE is located in the VIDTEST subdirectory of the PSYCHO directory on your CD-ROM.

#### Steps for Running Vidtest

- 1) From File Manager, double click the file VIDTEST.EXE**
- 2) Click on the button labeled Begin Testing.**
- 3) On the next screen, choose the browse option and pick the VIDTEST.AVI file.**
- 4) Choose OK and the system will begin testing.**
- 5) After the video test, choose Continue so that the system will test the rest of your system's components.**
- 6) When the additional tests are completed, a graph showing your system's performance will appear. All of your components should fall in the satisfactory range in order to play Video for Windows acceptably.**



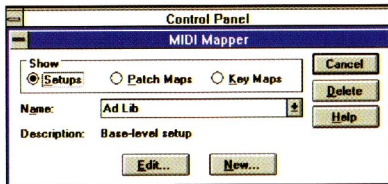
## Audio

### Volume Levels

The Psychotron uses both .WAV and MIDI audio throughout the game. You will need to use the mixer utility provided with your sound board if the audio levels are not balanced. The background music is MIDI on most scenes and should be audible below the voices of the characters. Check your sound board documentation for more information on setting audio levels.

### MIDI Music

The Psychotron MIDI files are programmed in Extended MIDI. This means that the instruments are in channels 1 through 10. The drums are in channel 10.



To play these MIDI files you must set the MIDImapper in your Windows Control Panel so the source channels (1 to 10) are mapped to your midi sound device and source channel 10 is mapped to the drum channel (usually channel 10 or 16). The following MIDI configuration will apply to most system configurations:[see chart on page 11]

Src Chan	Dest Chan	Port Name	Patch Map Name	Active
1	1	Ad Lib	[None]	<input checked="" type="checkbox"/>
2	2	Ad Lib	[None]	<input checked="" type="checkbox"/>
3	3	Ad Lib	[None]	<input checked="" type="checkbox"/>
4	4	Ad Lib	[None]	<input checked="" type="checkbox"/>
5	5	Ad Lib	[None]	<input checked="" type="checkbox"/>
6	6	Ad Lib	[None]	<input checked="" type="checkbox"/>
7	7	Ad Lib	[None]	<input checked="" type="checkbox"/>
8	8	Ad Lib	[None]	<input checked="" type="checkbox"/>
9	9	Ad Lib	[None]	<input checked="" type="checkbox"/>
10	16	Ad Lib	[None]	<input checked="" type="checkbox"/>
11	11	Ad Lib	[None]	<input checked="" type="checkbox"/>
12	12	Ad Lib	[None]	<input checked="" type="checkbox"/>
13	13	Ad Lib	[None]	<input checked="" type="checkbox"/>
14	14	Ad Lib	[None]	<input checked="" type="checkbox"/>
15	15	Ad Lib	[None]	<input checked="" type="checkbox"/>
16	16	Ad Lib	[None]	<input checked="" type="checkbox"/>

OK Cancel Help

### Sound Boards and Drivers

Most problems with audio can be traced directly to the sound board and driver. If you are having problems with the audio on your system while running The Psychotron, use the Windows Control Panel to check which sound drivers you have installed. If you have the correct driver installed and are still having problems with the sound, you may need to check the settings on the sound board itself to make sure it does not conflict with any other settings on your computer. Please check the documentation that came with your sound board, or call the technical support number for the manufacturer of your sound board for assistance.

# Hardware Questions?

Manufacturer	BBS Number	Technical Support	Main Number
Ahead Systems	510-623-0961	none	510-623-0900
ATI Technologies	416-764-9404	905-882-2626	905-882-2600
Boca Research, Inc.	407-241-1601	407-241-8088	407-997-6227
Creative Labs	408-428-6600	408-428-6622	none
Diamond Computer Systems, Inc.	2400 Baud: 408-730-1100 9600 Baud: 408-524-9301	408-736-2000	408-736-2000 Fax: 408-730-5750
Hercules Computer Technology, Inc.	2400 Baud: 510-623-7142 9600 Baud: 510-623-7034	510-623-6050	510-623-6030
National Design, Inc.	512-329-6327	1-800-253-8831	512-329-5055
Orchid Technology, Inc.	2400 Baud: 510-683-0327	510-683-0323  9600 Baud:	510-683-0300  510-683-0555

# Call These Numbers

Manufacturer	BBS Number	Technical Support	Main Number
Trident Microsystems, Inc.	415-691-1016	none	415-691-9211
TrueVision, Inc.	none	317-577-8788	317-841-0332
Tseng Labs	none	none	215-968-0502
Media Vision	2400 Baud: 510-770-0968 9600 Baud: 510-770-0527	Inside California 510-770-8600 Outside California 1-800-638-2807	Inside California 510-770-8600 Outside California 1-800-638-2807
Roland Corporation	none	213-685-5141 ext.770	213-685-5141
Turtle Beach Systems	717-845-4835	none	717-767-0200

## Customer Service

If you are experiencing difficulties with The PSYCHOTRON, and you are a registered user, you may call our technical support department for assistance at (214) 385-2957. A technician will be available to help you between the hours of 10:00am and 5:00pm Central time, Monday thru Friday.

We welcome your questions, comments, or other feedback regarding The PSYCHOTRON or any of our other products. You may write us at:

### Merit Software

13707 Gamma Road  
Dallas, TX 75244

#### **ON LINE SUPPORT VIA COMPUSERVE**

For on-line support of The PSYCHOTRON via Compuserve, call 800-848-8199 and ask for representative 321 to get your FREE introductory membership and a \$15 usage credit.

If you are already a member of Compuserve, type the command GO GAMAPUB at any ! prompt to get Merit Software's support section, or contact our technical support department at ID#76711,247.



## What is Compuserve?

Compuserve is the world's largest international network of personal computer users (1.2 million+members worldwide) and has over 1,400 products and services to choose from. You can talk directly to software publishers, download free software, and get the latest news and sports of interest with a personal clipping service. Check out the weather forecast with Accu-Weather maps. Plan, schedule and book your own flights; do your own research with an on-line encyclopedia; look at the latest up-to-the-minute stock reports. Utilize international electronic mail capabilities, software support and much, much more.



# Merit Software Program and License Agreement and Limited Warranty

CAREFULLY READ ALL THE TERMS AND CONDITIONS OF THIS AGREEMENT PRIOR TO USING THE PROGRAM RECORDED ON THE ENCLOSED MEDIA. OPERATING THIS PROGRAM INDICATES YOUR ACCEPTANCE OF THESE TERMS AND CONDITIONS.

- COPYRIGHT:** THESE PROGRAMS AND THE RELATED DOCUMENTATION ARE COPYRIGHTED. YOU MAY NOT USE, COPY, MODIFY, OR TRANSFER THE PROGRAMS OR DOCUMENTATION, OR ANY COPY THEREOF EXCEPT AS EXPRESSLY PROVIDED IN THIS AGREEMENT.
- LICENSE:** You have the non-exclusive right to use any enclosed program only on a single computer. You may load the program into your computer's temporary memory (RAM). You may physically transfer the program from one computer to another provided that the program is used on only one computer at a time. You may modify or translate the program providing such modification or translation is for your own use and that no more than one such modified or translated copy exists at any one time. You may not electronically transfer or access the program from another computer over a network. You may not distribute copies of the program or accompanying documentation to others. You may not decompile, disassemble, or reverse engineer the program. You may not attempt to unlock or bypass any copy protection utilized with the program. Title to the programs and all other rights and uses not specifically granted in this license are reserved by Merit Software.
- BACK-UP AND TRANSFER:** You may make one (1) copy of the program solely for back-up purposes. You must reproduce and include the copyright notice on the back-up copy. You may transfer and license the product to another party only if the other party agrees to the terms and conditions of this Agreement and completes and returns a registration card to Merit Software. If you transfer the program you must at the same time transfer the documentation and back-up copy or transfer the documentation and destroy the back-up copy.
- TERMS:** This license is effective until terminated. You may terminate it by destroying the program and documentation and all copies thereof. This license will also terminate if you fail to comply with any term or condition of this Agreement. You agree upon such termination to destroy all copies of the program and documentation.
- PROGRAM DISCLAIMERS:** The programs are provided "AS IS" without Warranty of any kind, either expressed or implied, including, but not limited to, the implied warranties of merchantability and fitness for a particular purpose. The entire risk as to the results and performance of any program is assumed by you. Should the program prove defective, you (and not Merit Software or its dealers) assume the entire cost of all necessary servicing, repair or correction. Further, Merit

Software does not warrant, guarantee or make any representations regarding the use of, or the results of the use of, the program in terms of suitability, accuracy, reliability, currentness, or otherwise; and you rely on the program and results solely at your own risk.

6. **MEDIA LIMITED WARRANTY:** Merit Software warrants to the original licensee that the media on which the program is recorded shall be free from defects in material and workmanship only for a period of ninety (90) days from the date of original purchase. If a defect covered by this warranty occurs during this 90-day warranty period, and it is returned to Merit Software no later than five (5) days of the end of such 90 day period, Merit Software shall either replace or repair the product. At the end of the expiration Merit Software will replace or repair your purchase for \$5.

The above warranty is exclusive and in lieu of all other conditions and warranties, express or implied, including, but not limited to implied conditions or warranties of merchantability or fitness for a particular purpose and those arising by statute or otherwise in law or from a course of dealing or trade. To the extent such statutes or laws prohibit the exclusion of such implied warranties they shall be limited to a period of 90 days from the date of your original purchase. No conditions or warranties, either express or implied will apply after this period.

7. **LIMITATION OF LIABILITY:** Merit Software's liability is limited solely to the repair or replacement of the defective product, in its sole discretion, and shall not in any event include damages for loss of use or loss of anticipated profits or benefits or other incidental or consequential costs, expenses or damages, including without limitation any data or information which may be lost or rendered inaccurate, even if Merit Software has been advised of the possibility of such damages.

Some states do not allow an exclusion of implied warranty or limitation of incidental or consequential damages, so the above limitations or exclusions may not apply to you. This warranty gives you specific legal rights, and you may also have other rights which vary from state to state.

8. **MISCELLANEOUS:** This agreement represents the entire understanding regarding the programs and related documentation, and supersedes any prior purchase order, communications or representations. This agreement may only be modified by a written amendment signed by an officer of Merit Software. If any provision of the agreement shall be deemed unlawful, void, or for any reason, unenforceable it shall be deemed severable from, and shall in no way effect the validity and enforceability of the remaining provisions of the agreement.

This license agreement shall be governed by the laws of the United States of America and the State of Texas.

If this product is being acquired for or on behalf of the United States of America, its agencies and/or instrumentalities, it is provided with RESTRICTED RIGHTS, and all use, duplication, or disclosure with respect to the included software and documentation is subject to the restrictions set forth in The Rights in Technical Data and Computer Software clause at 252.227-7013 of the DOD FAR and the Rights in Data-General clause at 52.227-14 of the FAR. Unless otherwise indicated, the manufacturer/integrator is Merit Software, 13707 Gamma Road, Dallas, TX 75244.

9. The program License Agreement shall insure to the benefit of Merit Software, its parent, and all affiliated companies thereof.

Merit Software and the Merit logos are trademarks of Merit Software, Inc.

## Credits

Developed by **The Multimedia Store™**

Written and Programmed by **Rick Gonzalez**

Produced by **Robert Cox**

Video Production by **Tom Henning**

3D Animation by **Cody Davis**

Music by **Kurt Otto**

Published by **Merit Software, Inc.**

The Psychotron™ is a trademark of The Multimedia Store. Video for Windows™ is a trademark of Microsoft Corporation. File Manager™ and Program Manager™ are trademarks of Microsoft Corporation.

No portion of The Psychotron™ may be copied, reproduced, distributed, or modified without the expressed written consent of The Multimedia Store at 5347 Dietrich Road, San Antonio, TX, 78219.

Vidtest is distributed by permission of Microsoft Corporation and may not be copied from this CD-ROM to be distributed in any way.

Other brand and product names are trademarks or registered trademarks of their respective owners.





13707 Gamma Rd. Dallas, Tx 75244  
(214) 385-2353