

WARNING

**DO NOT BREAK THIS SEAL
UNLESS YOU ARE DESPERATE!**

This booklet contains a complete solution to Crusader, and should only be used as a last resort – otherwise it might spoil the challenging enjoyment of this adventure



Item/Person **Place in**

Riddle 1 – The trebuchet (follow the order)

- | | |
|------------------|-------------|
| 1. Stoney rubble | Box |
| 2. Projectile | End of line |
| 3. Winchman | Hoist |

Riddle 2 – The mining (follow the order)

- | | |
|----------------------|--------|
| 1. Armenian engineer | Zone 1 |
| 2. Sapper | Zone 2 |

Click in the direction indicated by the engineer

- | | |
|--------------------------------|--------|
| 3. Carpenter | Zone 3 |
| 4. Broken planks of cat-castle | Zone 4 |

Riddle 3 – The Roman chapel (follow order)

Redraw the same plan shown lower left by rotating and moving the objects.

Only the red spot stays unmoveable.

- | | |
|-----------------------------|--------------------|
| 1. Master craftsman/foreman | Square and compass |
| 2. Squarer | Pick and axe |
| 3. Mason | Square and bruin |
| 4. Mortar mixer | Bucket and spade |
| 5. Metalsmith | Bell |
| 6. Monk sculptor | Mallet and chisel |

Item/Person **Place in**

Riddle 4 – The map of the Crusades

- | | |
|----------------------|-------------------|
| Henry II | England |
| Frederick Barbarossa | Holy Roman Empire |
| Byzantine Emperor | Byzantine Empire |
| Baldwin IV | Emirats de Damas |
| Saladin | Egypt or Syria |
| The Pope | Rome |

Riddle 5 – The vessel

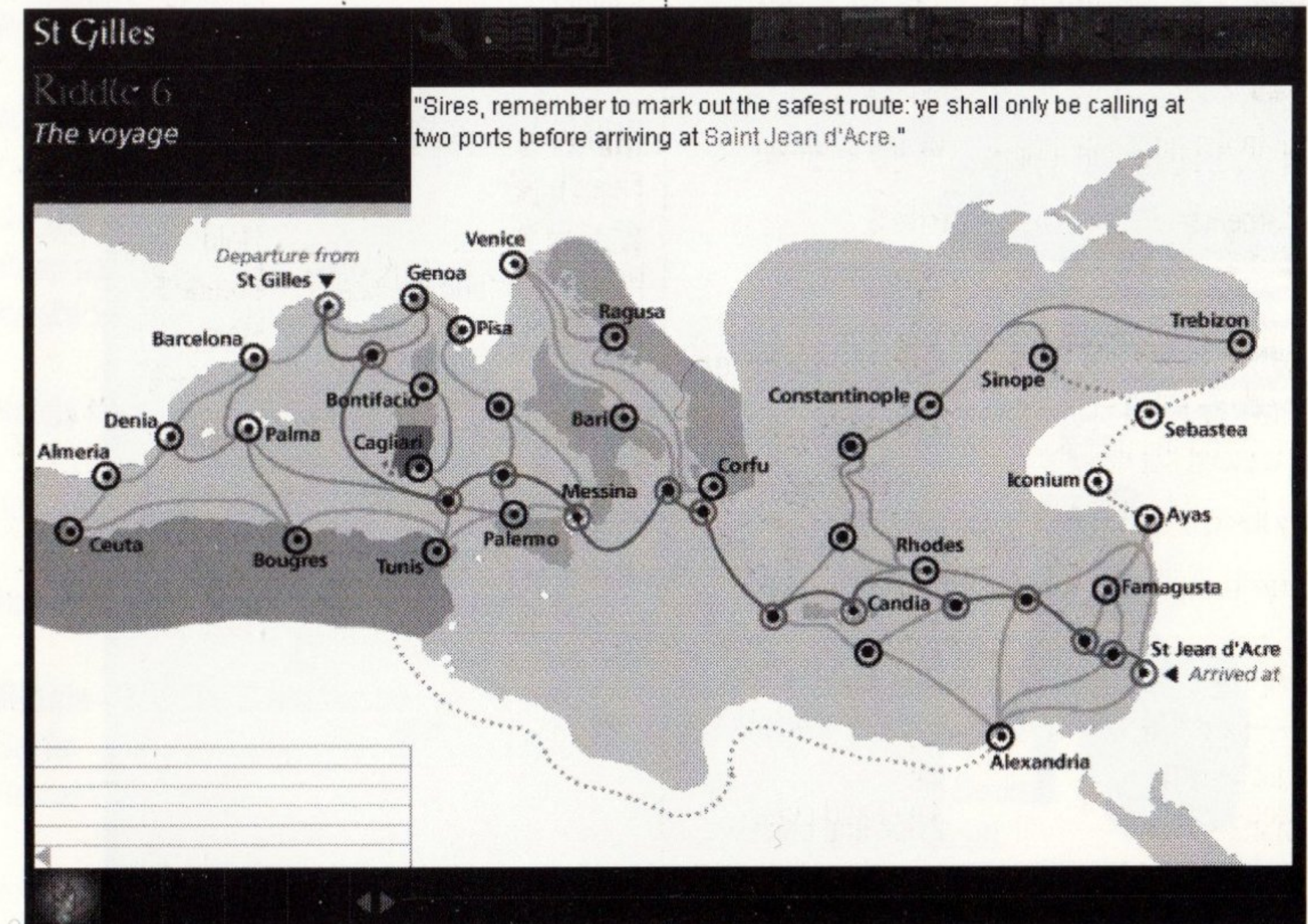
- | | |
|----------------------------|------------|
| Fresh fruits | Hold |
| Wine of Cyprus | Hold |
| Sacks of sulphur/quicklime | Foredeck |
| Dry meat | Hold |
| Victualler | Afterdeck |
| Navigator | Rudder |
| Catapult | Forecastle |
| Coastal pilot | Forecastle |
| Carpenter-caulker | Deck |
| Cat (feline) | Hold |

Item/Person **Place in** **Item/Person** **Place in**

Riddle 6 – The voyage

- | | |
|-----------------------|------------------|
| The Doge of Venice | Red zone |
| The Genoan consul | Light brown zone |
| The Pisan consul | Dark blue zone |
| The Byzantine emperor | Ochre zone |

- | | |
|-----------------------|-----------------|
| The Moorish pirate | Dark brown zone |
| The Pope | Green zone |
| The Normans of Sicily | Beige zone |
- The only two ports of call are Messina and Candia





Item/Person	Place in	Item/Person	Place in
-------------	----------	-------------	----------

Riddle 7 – The sea battle

Using the rotate and move icons, place the Templar galleys in close arrow-head formation around the Lucina

When they are in position:

Cabling	Templar galley
Bags of quicklime	Barrel
Sulphur	Barrel
Naphtha	Barrel
Saltpeter	Barrel
Pitch tar	Barrel



Item/Person	Place in	Item/Person	Place in
-------------	----------	-------------	----------

Riddle 8 – The astrolabe

Reconstitute the Great Bear by linking the stars

Find the Pole Star and place it on the revealed shooting star axis as requested

Rotate the pointer on the astrolabe to point at the Pole Star

Italian financiers	kingdoms of the West
Crusading knight	Italian merchants from kingdoms of the West
Raymond of Tripoli	Knights from kingdoms of the West
Rich Byzantine merchant	Antioch and Tripoli
Emir Al-Aziz Uthman	Byzantine Empire
Emir Al-Afdal Ali	Egypt
Armenians	Kingdom of Damascus
	Little Armenia

Riddle 9 – Saint Jean d’Acre

Doge of Venice	Venetian quarter
Genoan consul	Genoese quarter
Pisan consul	Pisan quarter
Knight Templar	Knights Templar quarter
Knight Hospitaller	Knights Hospitaller quarter
Teutonic knight	Teutonic knights quarter
Rep of the Court of the Chain	Court of the Chain

Riddle 10 – The Caravansery

Settler	Port of Caesarea
Reynald of Chatillon	Principality of Outrejordain
Pilgrim	Pilgrims from the

Riddle 11 – The Frankish dynasty

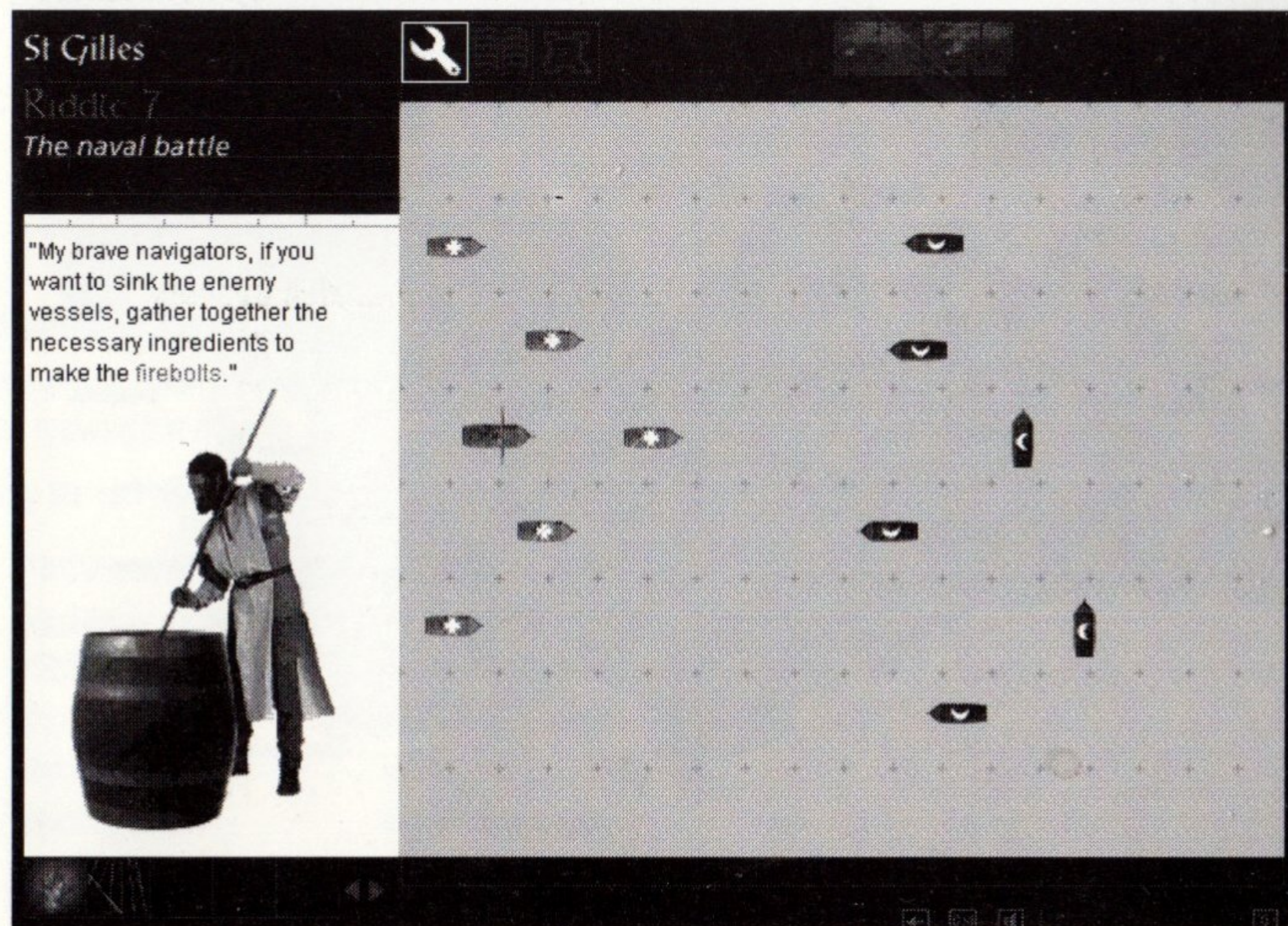
Guy of Lusignon	Z1
Reynald of Chatillon	Z2
Baldwin V (Little)	Z3

Move to Party of the court...

Agnes of Courtenay
Reynald of Chatillon
Guy de Lusignon
Sybille

Move to Party of the Barons...

Raymond III of Tripoli
Baldwin IV
Baldwin V





Item/Person Place in

Riddle 12 – The surgery

Stylet	Explore
Curette	Evacuate
Cautery	Disinfect
Needle	Sow

Prepare the missing elements in the mortar

- Mandrake
- Poppy
- Honey

Put the mixture in the blue theriac pot

Riddle 13 – The alchemist

Rebuild the magical square

4	9	2
3	5	7
8	1	6

Magical square	Mortar
Pouch of gold	Mortar

Put mixture in the Alambic and add: Wine

Item/Person Place in

Riddle 14 – The Kingdom of Jerusalem

Roman milestone	Via Maris
Dromedary	Routes
Bedouin	Watering holes
Templar	Fortresses
Turcople	Risks of ambush

Map out the route to Kerak (follow the order):

1. Acre
2. Haiffa
3. Caesarea
4. Nablus
5. Jericho
6. Jerusalem
7. Bethlehem
8. Hebron
9. Paumier
10. Kerak

Riddle 15 – The Kerak fortress

Flock of sheep	Skinner
Carcass (a flock)	Butcher
Olive tree	Olive press
Cereals	Mill
Sacks of flour (cereals)	Oven
Sugar cane	Basket worker
Roof tiles	Byzantine engineer
Vines	Press

Item/Person Place in

Riddle 16 – The roughcasts

Aleppian engineer	Compass and square
Carpenter	Saw and axe
Palm tree planks	Pins and beams
Cowhides	Firefighting

Riddle 17 – The catapult

Iron rod	Metal lug in front of catapult
Fur padding	Crosspiece
Projectiles	Spoon
Winchman	Catapult

Riddle 18 – The postern

Hoist	Hoisting room
Chain	Hoisting room

Click on the three pulleys

Counterweight	Counterweight room
---------------	--------------------

Click quickly on the winch to turn it anti-clockwise and lower the drawbridge

Item/Person Place in

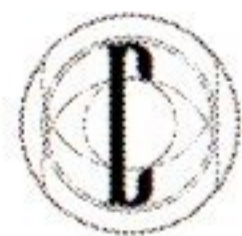
Riddle 19 – The Askar

Qayrawan	Light cavalry
Faris	Cavalry
Caragulahm	Cavalry
Sudanese	Infantry
Dalaymites	Infantry
Ghazis and Mutawiahs	Religious volunteers
Maimonide	Men of science
Damascene engineer	Men of science
Imam	Men of science
Pharmacist	Medical assistants
Persian surgeon	Medical assistants
Shopkeeper	Souk
Craftsmen	Souk
Saladin	Residence
Mameluke	Persian guard

Riddle 20 – The chess move

Agnes of Courtenay	Black queen
Reynald of Chatillon	Black castle
Gerard of Ridefort	Black bishop
Saladin	White knight
Baldwin IV	White king

Move the white bishop on the diagonal as far NW as possible



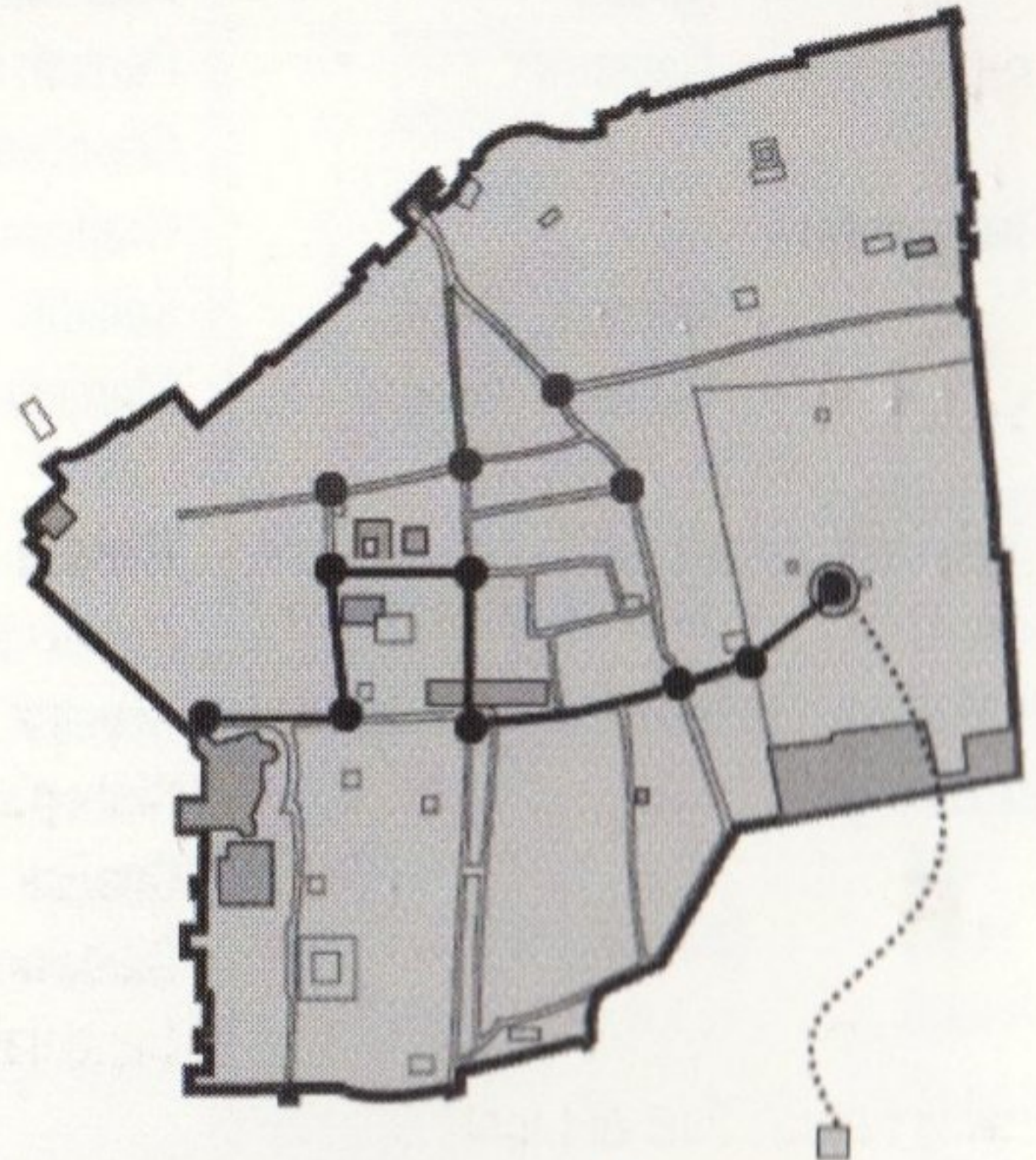


Item/Person	Place in	Item/Person	Place in
Riddle 21 – Jerusalem			
Baldwin IV	Tower of David	Knight Hospitaller	Hospital
Agnes of Courtenay	Manor	Teutonic knight	Saint Mary of the Germans
Patriarch Heraclius	Holy sepulchre	Royal militia	Tancred's tower
Levantine christians	Saint Anne chapel	Religious souvenirs seller	Saint Etienne Road
Abraham	Dome of the Rock	Italian financiers	Money exchange
Gerard of Ridefort	Commanderie of the Knights Templar	Follow this route:	

Jerusalem

Riddle 21
Jerusalem, the city of three faiths

"The great Daedalus himself would have lost his way in the maze underneath Jerusalem! Are you capable of retracing the path taken by the procession during the Coronation? It runs from David's Tower to the Temple of the Lord."




Templum Domini (Dôme du Rocher)




Item/Person	Place in	Item/Person	Place in
Riddle 22 – The Dome of the Rock			
Shahada	Profession of faith		
Prayer mats	Prayer		
Beggar	The Zakat		
Half-moon	Ramadan		
Black stone	Pilgrimage to Mecca		
Angel Gabriel	Cupola, Dome of the Rock		


Riddle 23 – The Tree of Light



Square 1



Square 5 x 2

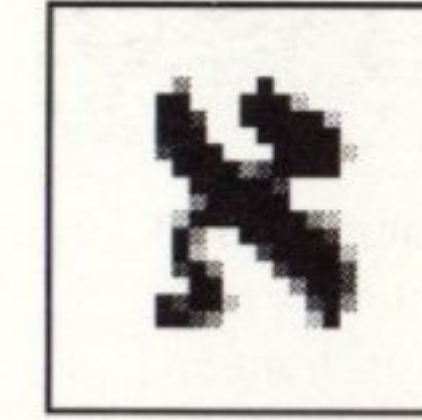
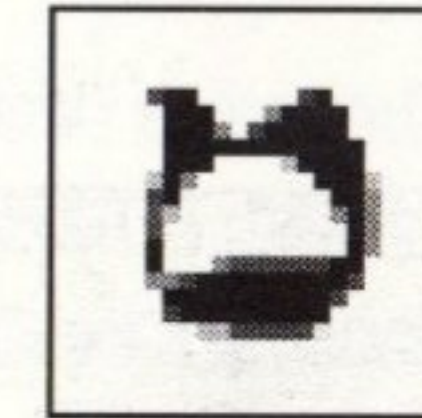
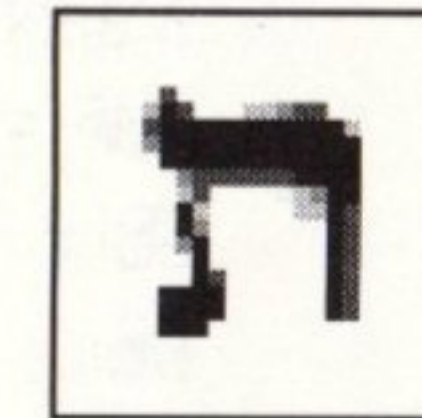


Square 10

Hannukah (via Jewish Feast) Tree of Light

Riddle 24 – The Golem (follow the order)

Put these three characters on the Golem's front:



Riddle 25 – The Holy Sepulchre (follow the order)

- | | |
|------------------|--------------------------|
| Crucifix | Tomb of Christ [1] |
| Bishop's crosier | Navel of the world [2] |
| Chalice | High altar [3] |
| Ciborium | Stairs [4] |
| Candelabra | Saint Helen's Chapel [5] |





Item/Person **Place in**

Riddle 26 – The Chrism

Put the four elements still in your wallet in their own place

- | | |
|-------|----|
| Fire | NW |
| Water | SE |
| Air | NE |
| Earth | SW |

The fifth element, the Oroborous (snake), required for the centre of the Chi-Rho, is hidden behind the centre column in The Gloomy Chapel of Dun-Le-Roy. Quickly click the column to rotate it.



Game over!



