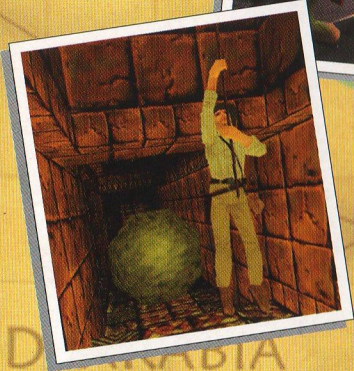
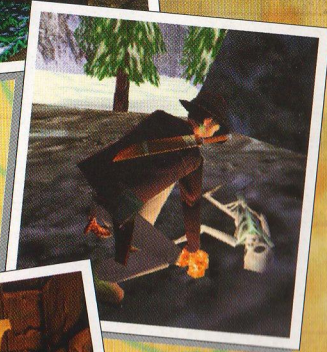
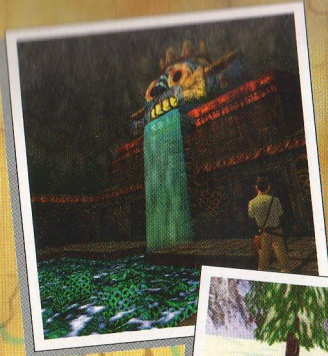


LUCASARTS ENTERTAINMENT COMPANY PRESENTS



indy.lucasarts.com

# INDIANA JONES<sup>®</sup>

and the  
INFERNAL MACHINE<sup>™</sup>

6511802



© LucasArts Entertainment Company LLC. © Lucasfilm Ltd. & TM. All rights reserved. Used under authorization.

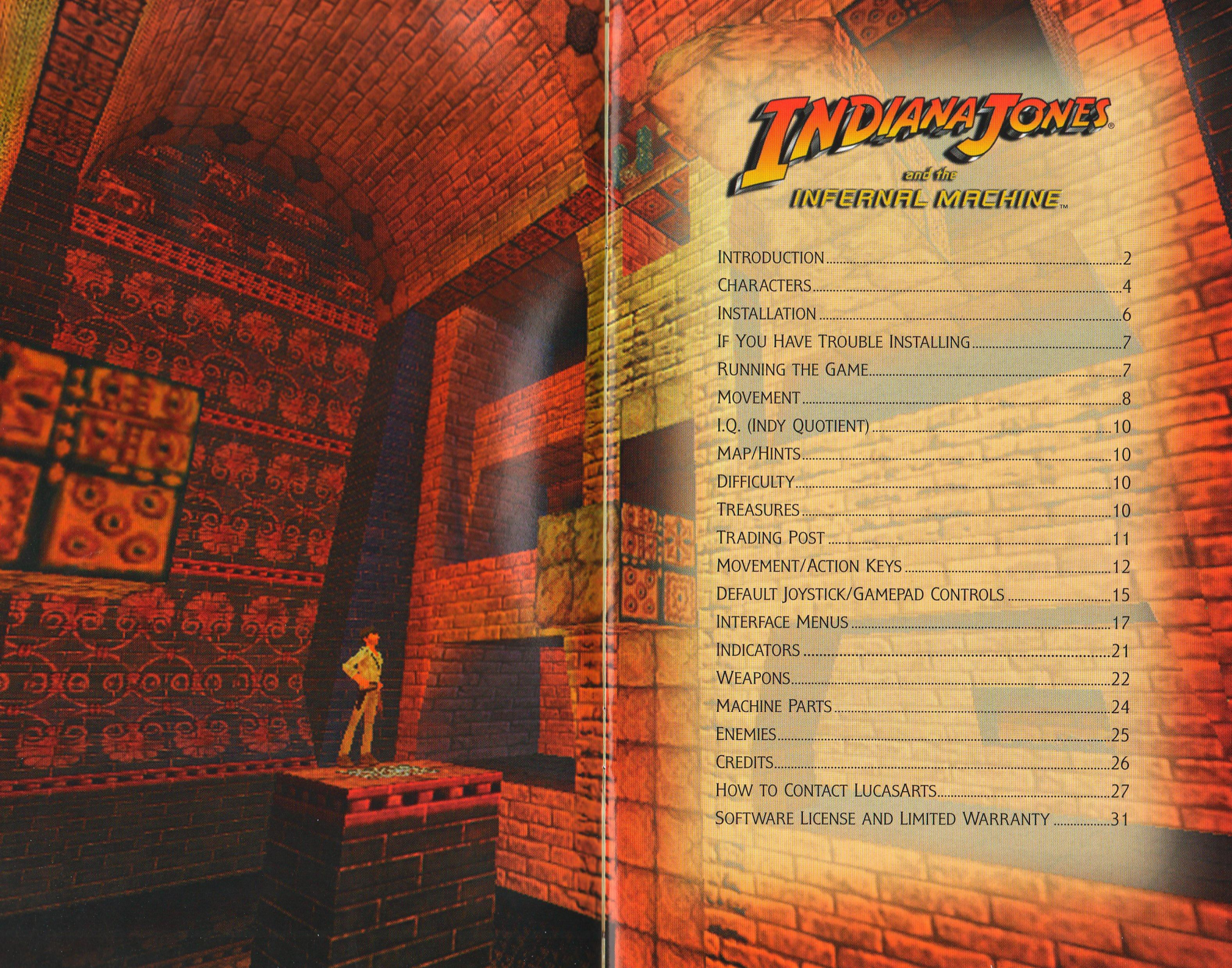


# INDIANA JONES<sup>®</sup>

and the  
INFERNAL MACHINE<sup>™</sup>

ADVENTURE GUIDE



The background of the entire page is a screenshot from the game 'Indiana Jones and the Infernal Machine'. It shows a character in a tan outfit standing on a stone ledge in a large, ancient, brick-walled chamber. The walls are covered in intricate, glowing red and gold patterns. The lighting is dramatic, with strong shadows and highlights.

# INDIANA JONES<sup>®</sup>

and the  
**INFERNAL MACHINE<sup>™</sup>**

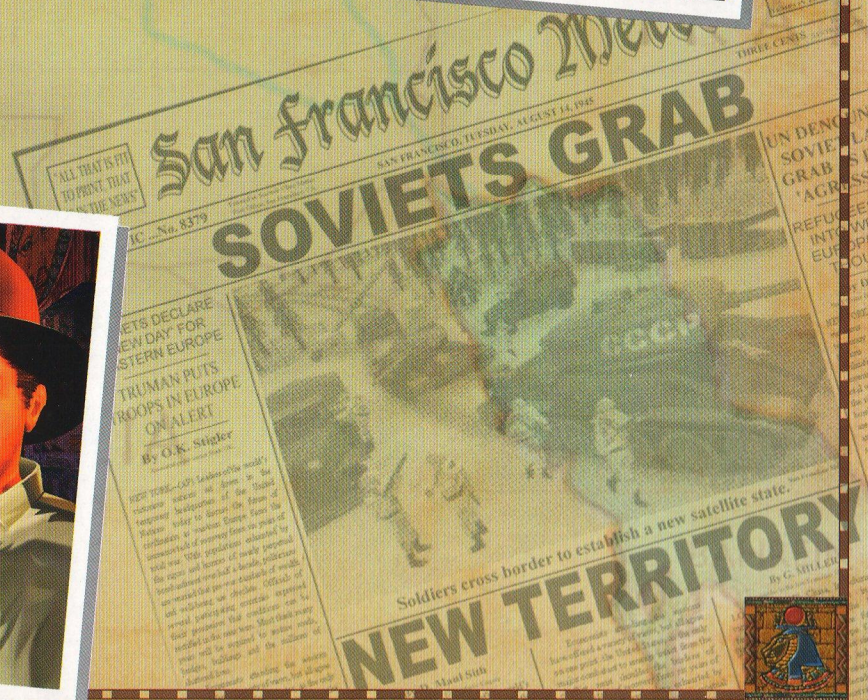
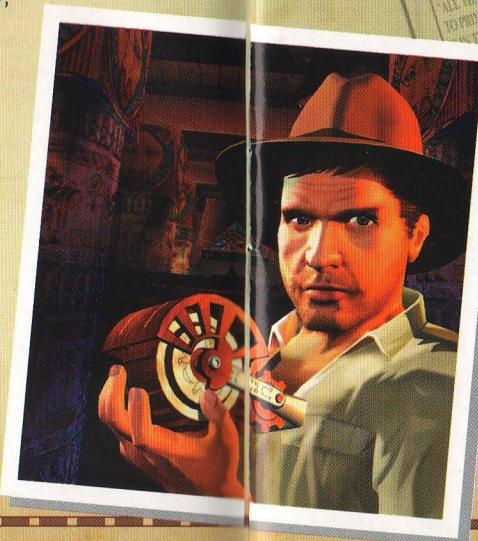
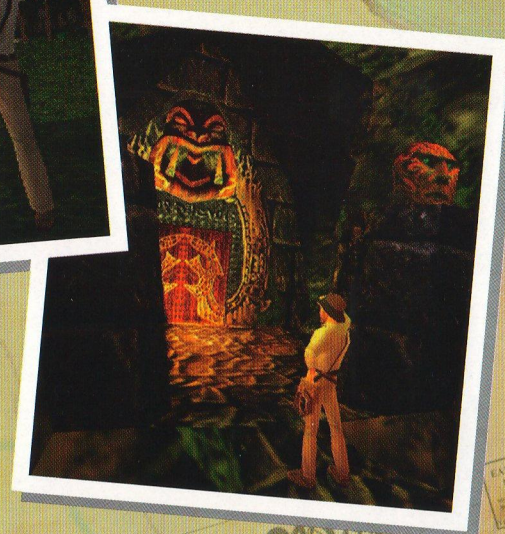
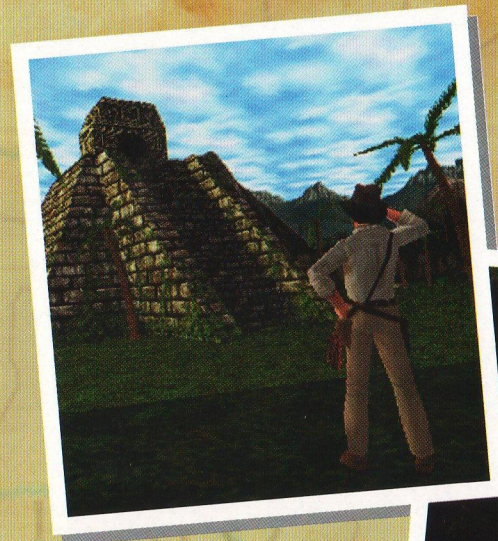
INTRODUCTION .....	2
CHARACTERS .....	4
INSTALLATION .....	6
IF YOU HAVE TROUBLE INSTALLING .....	7
RUNNING THE GAME .....	7
MOVEMENT .....	8
I.Q. (INDY QUOTIENT) .....	10
MAP/HINTS .....	10
DIFFICULTY .....	10
TREASURES .....	10
TRADING POST .....	11
MOVEMENT/ACTION KEYS .....	12
DEFAULT JOYSTICK/GAMEPAD CONTROLS .....	15
INTERFACE MENUS .....	17
INDICATORS .....	21
WEAPONS .....	22
MACHINE PARTS .....	24
ENEMIES .....	25
CREDITS .....	26
HOW TO CONTACT LUCASARTS .....	27
SOFTWARE LICENSE AND LIMITED WARRANTY .....	31

**H**ISTORICAL NOTE: The oldest known real machine, a fused and corroded set of gears, was found by sponge divers in 1900 off the coast of Greece. It dates from a shipwreck in 78 B.C. Some scholars think it could be a mechanical planetarium described by Archimedes, but no one knows for sure.

1947. World War II is over. Dr. Henry "Indiana" Jones, Jr., exhausted by conflict, is trying to resume his digging career in the American Southwest, far from the excitement of his treasure-hunting past.

In truth, however, peace and quiet are boring companions. Fortunately for Indy's adventurous soul, the world is still a dangerous place. The Soviet Union has slammed an Iron Curtain down across Europe, provoking the Cold War that will occupy East and West for half a century. Communist agents are everywhere, searching for a weapon to tip the balance of power in their favor.

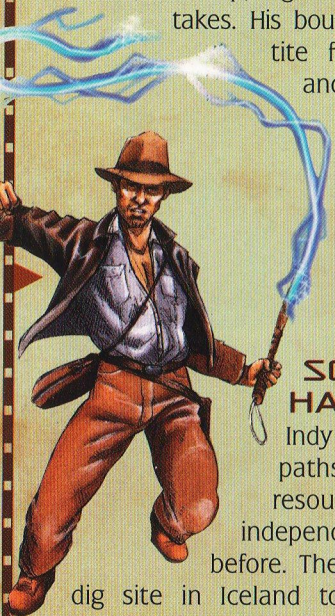
And...they may have found something useful in the desert ruins of Babylon. That's where King Nebuchadnezzar II built the legendary Tower of Babel 2600 years ago. The Bible portrays it as a failed attempt to reach heaven, inspired by pride, but Gennadi Volodnikov, an unorthodox Russian scholar, thinks the Tower housed a machine to reach across the dimensions of space and time, inspired by the winged god Marduk. When gears began to clatter, alarmed Babylonians toppled the Tower, scattering four of Marduk's disciples—and parts of the machine—to the far corners of the globe. Join Indy as he races the Soviets to recover those parts and stop them from repairing Marduk's "Infernal Machine."



## CHARACTERS

### INDIANA JONES

He holds an advanced degree, speaks and reads a dozen languages, has an encyclopedic knowledge of the past, and teaches school. Yet Indy is anything but a mild-mannered professor. He's been everywhere, seen everything, and when he gets into trouble he knows how to get out—using his wits, his fists, his whip, a gun—whatever it takes. His boundless appetite for treasure and adventure stems from an abiding faith in the mysteries of life...and a touch of greed.



### SOPHIA HAPGOOD

Indy has crossed paths with this resourceful and independent woman before. They worked a dig site in Iceland together, where she found a medalion that awakened her psychic powers. Later she helped him find Atlantis. Then, after a tumultuous romance, she disappeared. Now she's back, a spy for the newly formed Central Intelligence Agency, recruiting



Jones to figure out why the Soviets are digging up Babylon.

### SIMON TURNER



Sophia's boss. He's a military intelligence officer who parachuted into France to help organize the Resistance during World War II. When President Truman established the CIA, Turner was one of the first to join. He's cool and competent,

always near the action, rarely in it. He hates the Communists, because no one gets rich in their system. Where would America be without men like him?

### DR. GENNADI VOLODNIKOV

Analytical by training, mystical by nature, this near-sighted Soviet genius spent the war years designing top secret military codes. Now he's busy investigating the ruins of Babylon, convinced that the Tower of Babel once housed a power more terrifying than America's atomic bomb. Volodnikov is an unlikely archaeologist,



more at home with tea and piroshki than fieldwork. He's not much of a Party man either, but the force of his intellect keeps the Communist ideologues at bay.

### NUBIAN BOY



An agile young boy living among the pyramids of the Sudan. Educated in a British missionary school, he's fascinated by European technology—and scared to death of hyenas.

### HOLY WOMAN

The last resident and apparent caretaker of an ancient sanctuary in the high mountains of Soviet Kazakstan. Her withered frame and abrupt manner conceal a radiant energy Indy must learn to release.



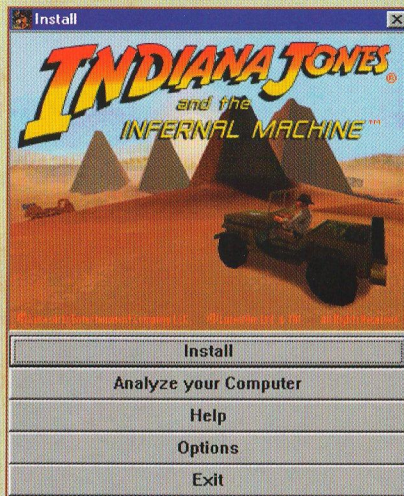
### MARDUK

Babylonians worshipped him as a god, but he's actually the power-hungry ruler of a strange domain called the Aetherium. If the mechanical gateway he designed to connect his world with ours had ever worked—woe befall mankind!



## INSTALLATION

- 1 Close all open windows on your desktop and quit all other applications.
- 2 Put the **Indiana Jones and the Infernal Machine** Disc 1 in your CD-ROM drive.
- 3 The **Indiana Jones and the Infernal Machine** installation screen will appear.



Installation Screen

If Autoplay is disabled and the game's Installer does not appear, you'll need to open the Installer manually. To do this, double-click on the My Computer icon, then double-click on the CD-ROM icon in the window that opens. Double-click the **JONES3D.EXE** file to open the Installer. It has these options:

- **Install:** Installs the game on your hard drive.
- **Analyze Your Computer:** Check your system to see if it meets game requirements. Once the game is installed, you can also access the DirectX Diagnostic Tool and install DirectX 6.1.

- **Help:** If you get stuck, click here to open the game's online manual. Also access the Troubleshooting Guide for detailed installation and troubleshooting tips via the Help system.
  - **Options:** Under Options, you can register the game online or visit the LucasArts Web site.
  - **Exit:** Returns you to your desktop.
- 4 To install, click the Install button.
  - 5 You will be prompted to register the game online if you have Internet access.
  - 6 Choose the destination for **Indiana Jones and the Infernal Machine** installation. The default directory is: **C:\Program Files\LucasArts\The Infernal Machine**. If you wish to install elsewhere, specify a different drive or directory name.
  - 7 You'll be given the option to create a series of shortcuts in the Start menu. Creating a shortcut will make it easier for you to launch the game. Click the checkboxes to deselect any shortcuts you don't want.
  - 8 Setup will create an **Indiana Jones and the Infernal Machine** Program Folder for the program icons. Click Next to choose the default (**Start Menu\Programs\LucasArts\The Infernal Machine**) or create a new folder or select an existing folder, then click Next again.
  - 9 You'll be prompted to create a shortcut for the game on your desktop and to view the Readme.
  - 10 If you are playing with a joystick, we recommend that you calibrate it before playing.
  - 11 If the game installs successfully, you will see a Setup Complete screen.

- 12 After installing the game, you may be prompted to install Microsoft's DirectX 6.1. The game will run with DirectX 6.0 or later. If DirectX 6.1 (or a later version) is detected on your system, the checkbox will remain empty and you will not need to install DirectX. Click Finish to complete the setup.
- 13 Now you are ready to play **Indiana Jones and the Infernal Machine**.

## IF YOU HAVE TROUBLE INSTALLING

If you have trouble installing, see the Troubleshooting Guide for more detailed installation and troubleshooting tips. To access the Troubleshooting Guide:

- 1 Open the Installer as described in step 3 on the previous page.
- 2 Click the Help button and choose Troubleshooting Guide from within Help.

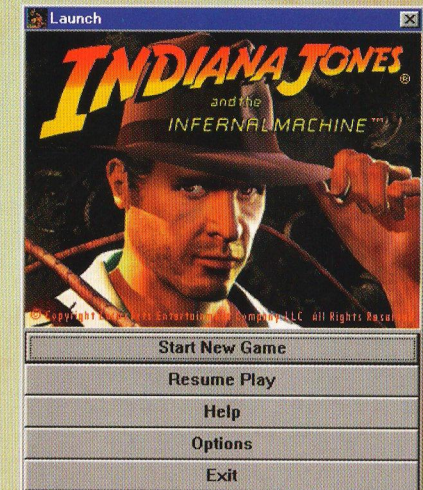
## RUNNING THE GAME

- 1 To run the game, insert the **Infernal Machine** Disc 1 into your CD-ROM drive. The game's Launcher will appear if Autoplay is active.
- 2 If Autoplay is disabled, find the **Infernal Machine** directory on your hard drive. Double-click the **Indy Launcher** icon (**Autorun.exe**), or double-click the CD-ROM icon on My Computer, then double-click the **Autorun.exe** file.

## THE LAUNCHER

- 1 After a successful installation the Installer becomes the Launcher.
- 2 The Launcher appears whenever you insert a game disc, when you

double-click the CD-ROM icon, when you select the **Infernal Machine** shortcut from your Start menu, or when you double-click the **Autorun.exe** file.



Launcher Screen

- 3 The Launcher displays the following options:
  - **Start New Game:** This launches a new game starting at the beginning of Indy's adventure.
  - **Resume Play:** Allows you to resume an existing saved game.
  - **Help:** Access the online manual that covers various help topics and the Troubleshooting Guide. Click a topic in the list to view it. Scroll through topics with the arrows.
  - **Options:** Here you can register online if you have Internet access, visit the LucasArts Web site, uninstall the game, and adjust advanced display and sound options (described on pages 20-21).

## MOVEMENT

With Indy in your control, you can whip, leap, run, swim and crawl through the game. The first level, The Canyonlands, serves as a training ground for you to practice moves. See the online Help Guide for a detailed walkthrough of the Canyonlands. **NOTE:** You can customize the controllers to make Indy's moves the most comfortable for your playing style in the Control Options menu. (See page 19 for details.)

### • Walk/Run:

Use the **ARROW** keys and the other movement keys to guide Indy through traps and around obstacles. Use **SHIFT** to make Indy run. Indy can run right off a cliff, so in dangerous territory, Indy should walk.

### • Jump:

Three kinds of jumps will help Indy get to those hard-to-reach locations. (See next page for details.)

### • Activate:

Indy needs to interact with all sorts of objects like treasures, doors and switches. Use the **CTRL** key to pick up, use or push and pull items.

### • Whip:

Indy's whip can be used in a variety of ways: as a weapon, as a climbing rope or even as a line to swing from, in addition to removing the weapons from the hands of enemies. You can also use the whip to pick up certain items and activate switches.

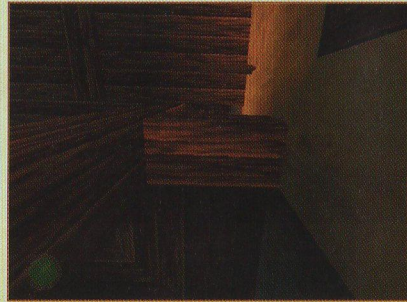
## COMBINATION MOVES

Occasionally Indy may need to use combinations of moves to reach difficult locations. For instance, sometimes Indy has to be at a higher level in a given location, but you

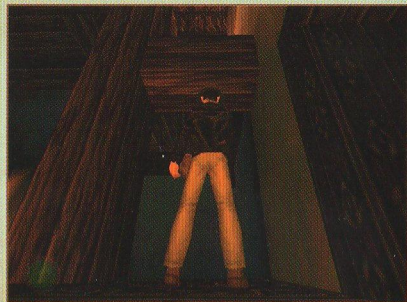
can't see any way to climb there. A good technique is to pull out the whip and look for objects that will anchor a whip climb.



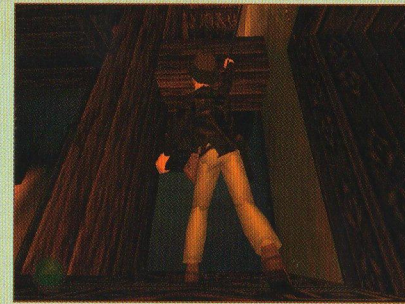
Here, Indy needs to get to the level above him, but it's too high to climb. He readies his whip.



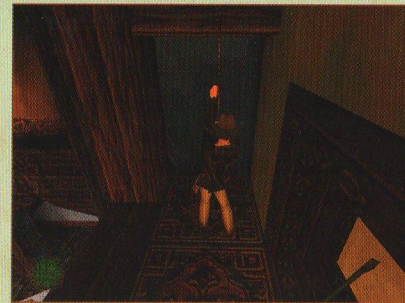
If Indy looked up (**NUMBER PAD 0 + UP ARROW**), he would see a strut sticking out directly above his head that he can use to whip and climb up.



As Indy approaches the right spot, the camera drifts upward towards the strut. This is a clue to use your whip.

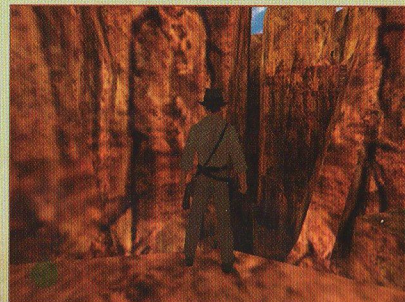


Now climb (**UP ARROW**) the rest of the way up the whip.



## LOOKING

The Look Around feature is particularly useful when thinking about jumping down from a cliff.



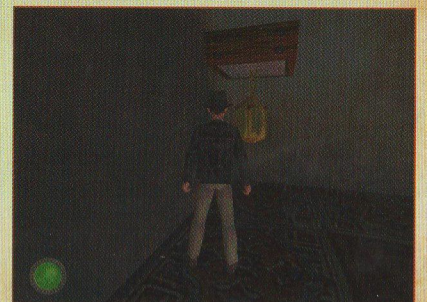
For instance, here Indy is standing on the edge of what looks like a very dangerous cliff...one that might mean certain death if he jumps.



However, a look down shows a reassuringly wide ledge within easy jumping range.

## JUMPING

It's useful to distinguish between regular jumps and forward jumps. The regular jump (**ALT** key) is used to reach something directly above Indy. The forward jump (**ALT+UP ARROW** keys) and the forward running jump (**SHIFT+UP ARROW+ALT** keys) are used to cover distance, especially when there is a crevasse or a pit to be jumped. Usually, when trying for height, either the forward jump or the regular jump will do. But sometimes, as in the case



shown here, the object (here, a lantern) is large enough that Indy will just bounce off if he tries a forward jump, so he must walk closer



and use a regular jump if he wants to climb on top of the little platform holding the lantern.

### I.Q. (INDY QUOTIENT)

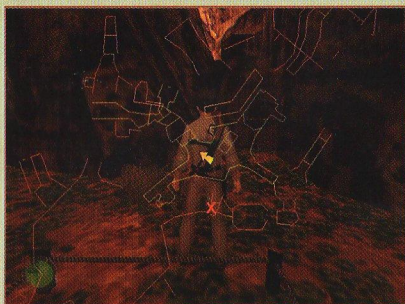
This is a numerical rating for your skill at playing the game. The highest possible score at the end of the game is 1000 I.Q. points. You get 150 points for just having the good sense to install and start up the game. You then get 40 points for each level successfully completed (16 levels, plus a bonus level).

You also can collect 10 treasures per level, each of which is worth one point. (**NOTE:** the I.Q. point value of treasures is different than their monetary value at the Trading Post.) You can lose I.Q. points by looking at hints (see Map/Hints below) or by playing at less than the maximum difficulty level. (You adjust difficulty and enable hints under Gameplay Options. See page 18 for details.)

### MAP/HINTS

The level map is accessed by the **M** key and shows all areas previously

explored in the level as an overlay on the screen. Areas in yellow are at the same level, areas in blue are below and red areas are above. Hints are accessed through Gameplay Options on the Options Menu.



Level Map Screen

(See page 18 for details.) When hints are turned on, the next area Indy should explore appears as an X on the map. Each hint you use on a level will subtract from your I.Q. score, with a total possible loss of 10 points per level.

### DIFFICULTY

Difficulty can be adjusted through Gameplay Options on the Options Menu. (See page 18 for details.) Difficulty affects how easy your enemies are to kill and the timing of certain puzzles. You lose up to 20 I.Q. points per level by playing at less than the Hard difficulty.

### TREASURES

Hidden throughout each level are 10 treasures: gold and silver ingots, gems, and valuable idols. Once you pick them up, treasures appear in your Inventory in the treasure box. Acquiring these treasures helps you in two ways: They boost your I.Q.

(one point per treasure), and they are worth money at the Trading Post.

### TRADING POST

The Trading Post appears between levels and has items for sale, including ammunition and items that restore Indy's health. There also is a

secret map which, when bought, provides access to the bonus level. Since the map is very expensive and the health restore items and ammunition can be acquired in the levels without buying them. You may want to save up money to buy this special item.



## MOVEMENT/ACTION KEYS

### STANDING

Walk	
Run	
Walk Back	
Turn Left	
Turn Right	
Quick Turn Left	
Quick Turn Right	
Sidestep Left	
Sidestep Right	
Roll Forward	
Roll Backward	
Roll Left	
Roll Right	
Jump Up	OR
Jump Forward	
Hop Back	
Run Then Jump	
Pick Up Item (PRESS IN FRONT OF/ ON TOP OF PICKUP ITEM)	
Push/Pull Ready (PRESS IN FRONT OF PUSH/PULL ITEM)	

Push  
(PRESS AFTER PUSH/  
PULL READY)



Pull  
(PRESS AFTER PUSH/  
PULL READY)



Climb Ledge  
(PRESS IN FRONT OF LEDGE)



Activate  
(PRESS IN FRONT OF ACTIVATE  
ITEM)



Look  
(USE ARROWS FOR DIRECTION)



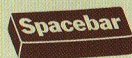
Number Pad

Crawl Mode On/Off  
(USE MOVEMENT KEYS TO  
CRAWL)



### USING WEAPONS AND OBJECTS

Draw/Put Away  
Current Weapon



Fire Weapon  
(PRESS IF WEAPON IS DRAWN)



Fists



Whip



.45-Caliber Revolver



9mm Pistol



Machine Pistol



Combat Rifle



Machete



Submachine Gun



Pump Shotgun



Bazooka



Grenade



Satchel Charge



Select Next Weapon



Select Previous  
Weapon



Map On/Off



Lighter On/Off



Use Health Powerup



Urgon's Part



Taklit's Part



Azerim's Part



Nub's Part



Tool from Beyond



### CLIMBING

(NOTE: Indy can't climb and hold a  
weapon at the same time.)

Mount/Climb Wall  
(PRESS KEY IN FRONT  
OF WALL)



Climb Up



Climb Down



Climb Left



Climb Right



Hop Off Wall



Climb Onto Ledge



Climb Down to  
Climbable/Hangable  
Ledge or Ladder  
(PRESS WHILE FACING  
BACKWARD AT CLIFF EDGE  
OR LADDER)



Whip Object for  
Climbing  
(PRESS KEY WITH WHIP  
IN HAND DIRECTLY BELOW  
OBJECT)



Hop Off Whip or  
Out of Levitation



### HANGING FROM LEDGE

Shimmy Left



Shimmy Right



Hop Off Ledge



Climb Onto Ledge



Climb Down Ledge  
and Hang



## SWIMMING ON SURFACE

- Paddle Forward
- Paddle Back
- Turn Left
- Turn Right
- Climb Out of Water Onto Marked Ledge

## UNDERWATER

- Swim Forward OR
- Dive Mode On/Off
- Tilt Down
- Tilt Up
- Turn Left
- Turn Right
- Pick Up Item (PRESS IN FRONT OF PICKUP ITEM)

- Activate (PRESS IN FRONT OF ACTIVATE ITEM)

## WEAPON USE WHILE SWIMMING

- Draw Machete (MACHETE IS THE ONLY WEAPON THAT CAN BE USED WHILE SWIMMING.)
- Swing Machete (WITH MACHETE DRAWN)

- Draw/Put Away Machete

## DRIVING JEEP

- Enter Vehicle (PRESS KEY WHILE FACING DRIVER'S SEAT)
- Accelerate
- Brake
- High Gear (DRIVE FASTER)
- Turn Left (PRESS WHILE MOVING FORWARD/BACK)
- Turn Right (PRESS WHILE MOVING FORWARD/BACK)
- Exit Jeep (PRESS WHILE STOPPED)

## RIDING RAFT

- Paddle Forward
- Paddle Forward/Left
- Paddle Forward/Right
- Back Paddle
- Turn Left
- Turn Right
- Exit Raft (PRESS WHILE STOPPED AGAINST DOCK)

## RIDING MINE CAR

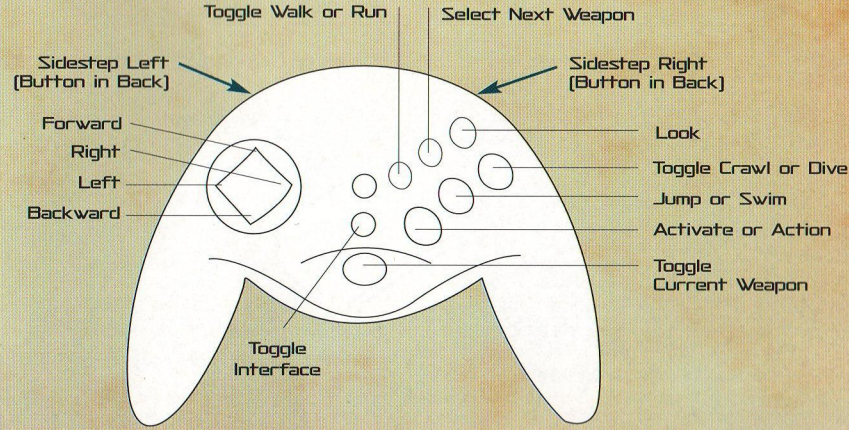
- Enter Mine Car (PRESS WHILE FACING MINE CAR)
- Accelerate
- Brake
- Duck
- Exit Mine Car (PRESS WHILE STOPPED AT VALID EXIT POINT)

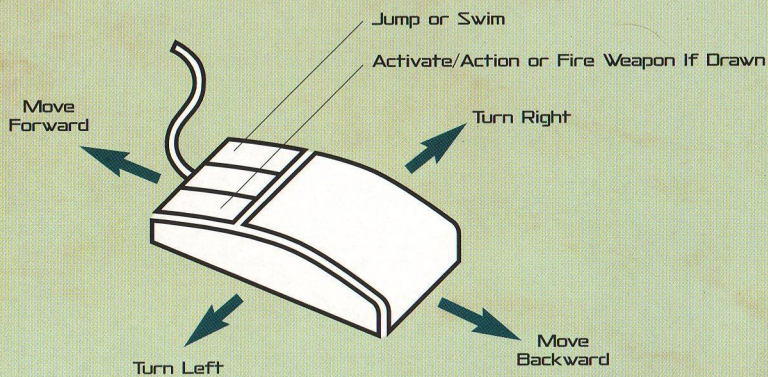
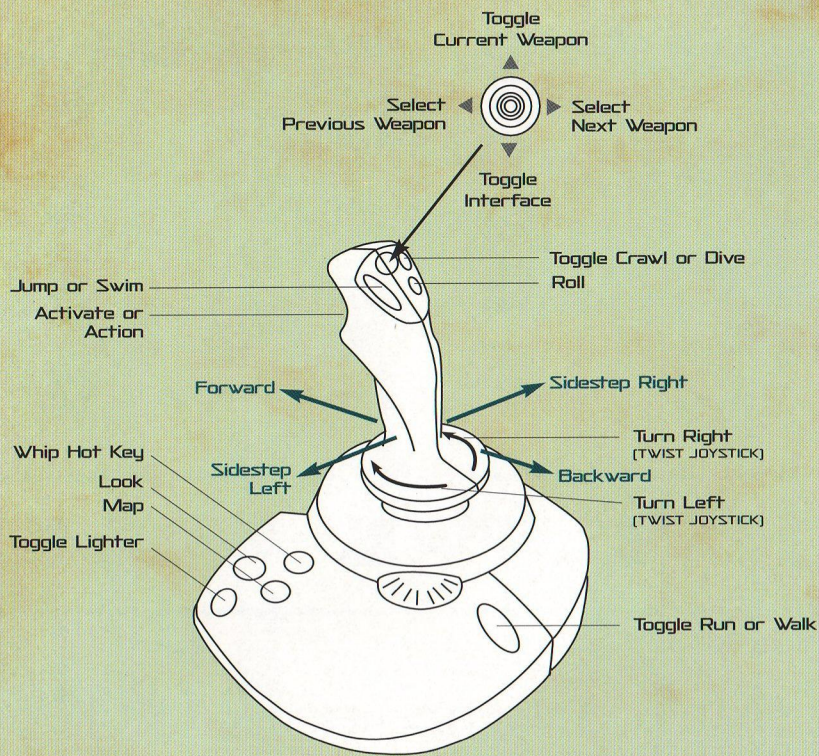
## INTERFACE

- Open Interface OR
- Move Right Through Interface
- Move Left Through Interface
- Move Up Through Selected Options
- Move Down Through Selected Options

Quick Save Quick Load Take Screenshot

## DEFAULT JOYSTICK/GAMEPAD CONTROLS





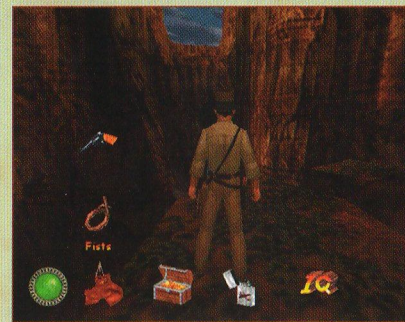
TAB or ENTER centers the mouse.  
 NOTE: As you move the mouse forward, Indy begins to walk. Move the mouse farther to make Indy run.

## INTERFACE MENUS

Pressing **ESC** or **I** opens the Interface, which contains the Weapons, Treasure/Health, Items and Options menus. Navigate the menus with the **ARROW** keys and use **ENTER** to select items in the menus.

## WEAPONS MENU

Shows which weapons Indy has and the number afterward shows ammunition. The basic weapons you start out with are Indy's fists, his whip, and his revolver. Indy's revolver has an unlimited number of shots.

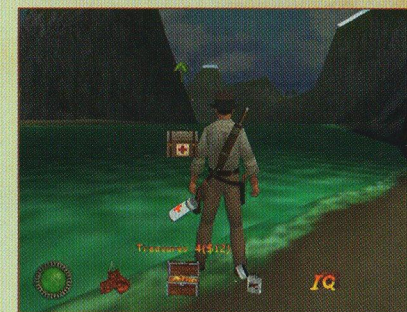


Weapons Menu Screen

## TREASURE/HEALTH MENU

Shows treasure and health items when available. The number of treasures that you have found in the level and their dollar value will be displayed. Each level has a total of 10 separate treasure items concealed somewhere. Acquiring these items boosts your Indy I.Q. (see page 10 for details) and allows you to purchase items from the Trading Post at the end of the level. Health restore items may be found on the various levels or be purchased from

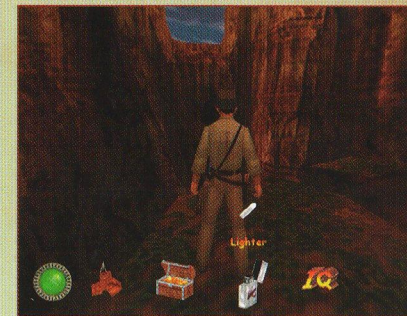
the Trading Post. (**NOTE:** The health restore items in the illustration are not available at the beginning of the game.)



Treasure/Health Menu Screen

## ITEMS MENU

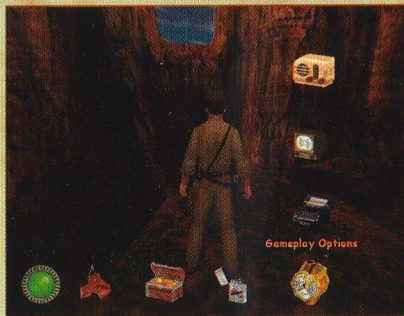
The Items menu contains all the things Indy picks up that are neither weapons, ammunition, treasures, nor health kits, like keys to doors or machine parts. Included are Indy's lighter, which he mostly uses to provide light in dark rooms, and his chalk, which he can use to write on walls. (You can't write on every surface—if writing doesn't work, try writing somewhere else.)



Items Menu Screen

## OPTIONS MENU

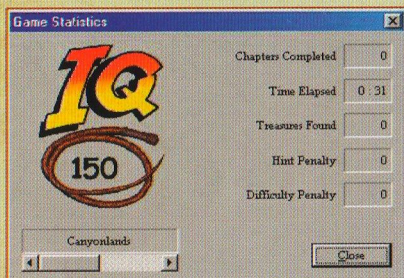
The Options menu contains a number of different useful game functions listed below.



Options Menu

## GAME STATISTICS

This shows various statistics about the game, including the Indy Quotient (I.Q.), a way of scoring how well you are playing the game.



Game Statistics Screen

The Statistics box also shows you other information relevant to your Indy Quotient: which chapter you are currently in, how many chapters you have completed, how many treasures you have found, how many hints you have used, and how much you have deviated from maximum difficulty. It also shows how much time has been used playing the game (but this is not used in I.Q. computation).

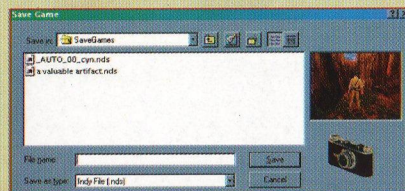
## HELP

Your online manual. Here you can find quick answers and Trouble-

shooting tips when you can't locate the manual, or after your dog has eaten it.

## SAVE GAME

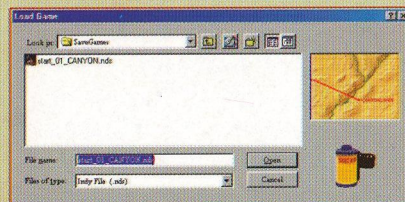
This menu enables you to save your progress in the game. (**NOTE:** The software automatically saves a game at the beginning of each level into a file that includes an abbreviation for the level name.) You can also "quick save" by pressing **F5**. This saved game will be called "QUICKSAVE" and overwrites your previous quick saved game.



Save Game Screen

## LOAD GAME

Enables you to load a previously saved game from the list provided. Load the game that you quick saved by pressing **F8**.



Load Game Screen

## GAMEPLAY OPTIONS

This is where you enable or adjust different special features in the game.

• **Difficulty Level Slider:** If you find enemies too tough in an area, you can turn the Difficulty Level down a notch or two...but bear in mind that



Gameplay Options Screen

the longer you use this, the more Indy Quotient points you lose.

• **Show Map Hints:** Click the checkbox to show map hints. Again, every time you get a new hint you lose Indy Quotient points.

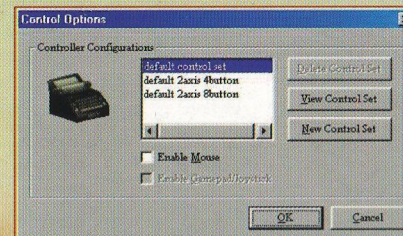
• **Map Rotation:** If map rotation is on, the top of the map indicates the direction Indy faces. If map rotation is off, the top of the map shows north.

• **Default to Run:** Click the checkbox to make Indy run as the default. Press **SHIFT** to make Indy walk.

• **Show Text:** You can turn on the text display in the game, which will enable you to catch every single spoken word.

## CONTROL OPTIONS

Enables you to change the default keyboard and controller settings for the game by creating and saving



Control Options Screen

a new set. To change keyboard settings (changing other controllers works the same way), view the default settings by clicking on View Control Set. If you wish to change assignments, click on the button marked New Control Set. You will then be prompted to enter a name for the new keyset. Once you have entered this name, you will then be given a list of commands and the current keyboard and game controller assignments for each command.

Click on the command you wanted to change. Example: if you want to change the Forward command to another key other than the **UP ARROW**, click on the Forward command, highlighting it, then click on the button marked Edit Assignment. This brings up the window that says "The next key will be assigned to Forward." Enter the key you want assigned to Forward.

You can also have two keys for the same command. If you want to have another key on the right side of the keyboard (for instance the ; key) that would toggle Crawl mode in the way that the **C** key now does, first click on Crawl, highlighting it, then enter the ; key when prompted, and view the results on the new command list.

• **Enable Mouse:** Click the checkbox to enable use of your mouse.

• **Enable Gamepad/Joystick:** Click the checkbox to enable use of your gamepad or joystick.

## DISPLAY OPTIONS

This allows you to change various video display features. Not all features shown here may be available

on all computers, depending on your video card.

• **Game Resolution:** Use this slider to adjust the game's resolution. Reducing resolution may improve performance.

• **Color Depth:** Adjust number of colors (bits per pixel) displayed. Try reducing colors if you experience poor performance.

• **Default Settings Button:** Press to return to the original settings.

• **Advanced:** If you click on the Advanced button, you will see some other display options. Most of these are for experienced graphics users.

• **3D Devices:** If you have a pass-through 3D card, that card will be selected by default. However, you may have both a 3D primary (combo) video card and a 3D pass-through card, and might want to switch from one to the other and choose the one that works best with the game.

• **3D Rasterizers:** This allows you to choose between 3D hardware and a software rasterizer, if any. Most users should pick the 3D hardware option.

• **Performance Level:** Adjust the game's frame rate. Try the Average setting if you have a slower machine.

• **Buffering:** Choose double or triple buffering. Double is standard and uses less video memory. Triple buffering may improve performance but uses more video memory. Not all video cards fully support this feature.

• **Mip Mapping:** This game feature smoothes textures. Choose bilinear or trilinear to improve the appearance of the game, but it can reduce performance.

• **Fog Slider and Checkbox:** In some areas of the game, turning fog on obscures distant geometry and can speed up frame rate. Uncheck the Fog checkbox or adjust the slider down if fog appears too thick.

• **High Poly Objects Checkboxes:** Uncheck High Poly Objects to make the game run faster.

## SOUND OPTIONS

Use the slider to adjust the volume. Check the 3D Sound checkbox if your sound card supports Direct3D sound. Uncheck the box if you prefer non-3D sound, or if your card doesn't work well with 3D sound enabled.

Check the Disable Sound checkbox to turn the sound off. Check the Reverse Channels checkbox to reverse the stereo (left and right audio) channels that are used in the game.



Display Options Screen

## INDICATORS

### HEALTH INDICATOR



Indy's Health Indicator shows literally how much life he has left. As long as it is green, he is in great shape. As he starts to lose health, it can turn yellow, red and then black. When the circle is all black, Indy is finished. But there are cures. Indy can find health kits along the way (or buy them from the Trading Post) that can restore him to fighting trim.

### UNDERWATER ENDURANCE INDICATOR



Shows how much air Indy has left. As long as there is blue on the indicator, Indy has air and takes no damage. When air runs out, Indy better be close to the surface, or he is dead.

### RAFT AIR INDICATOR



This yellow indicator shows how much air is left in Indy's raft. As long as the raft has air, Indy takes no damage. Rocks in the river cause the raft to spring leaks, which can be repaired with Puncture Repair Kits that Indy finds.

### AETHERIUM ENDURANCE INDICATOR



The Aetherium is another plane of reality where Marduk lives. Because this is a totally alien place, it is unhealthy for Indy. When Indy is floating, his tolerance for the Aetherium drops, which is shown on the Aetherium Indicator in the bottom right of the screen. Once the Indicator runs out, Indy starts taking damage quickly. He can restore energy with contact with ordinary reality.

## HEALTH KITS



### FIRST AID KIT

Restores partial health.

**TRAUMA KIT** Restores full health. Press **H** to use an available health powerup.



**MEDICINAL HERBS** Restores full health.

### MEDICINAL SPRIGS

Restores partial health.



### POISON KIT

Stops health damage after a poisonous bite.



## WEAPONS

When Indy needs a little fire power, sometimes a whip just isn't enough. Indy will collect quite an arsenal before this adventure is over. All of the guns are auto-aim, which means if Indy points in the general direction of an enemy, his gun is trained on his target. Use **SPACEBAR** to draw weapons, **CTRL** to fire. Here are some of the goodies he will acquire:



### FISTS (0 KEY)

Good with an unarmed opponent. Indy throws a dynamite punch.

### WHIP (1 KEY)

In addition to occasionally helping him across a ravine, the famous whip can also be used to disarm opponents, if Dr. Jones is fast enough. Also use it for solving puzzles and as a grappling hook.

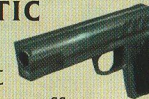


### .45-CALIBER REVOLVER (2 KEY)

Good short-range to medium-range weapon. Unlimited amount of ammunition.

### 9MM AUTOMATIC PISTOL (3 KEY)

Based upon the Soviet Tokarev T-33, a plain but effective World War II weapon for officers of the Red Army.

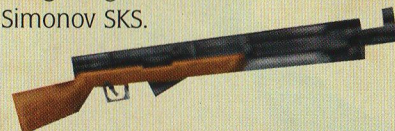


### MACHINE PISTOL (4 KEY)

Rapid-fire military automatic based upon the famous German Mauser M1912. This is the longest-range handgun and the most deadly.

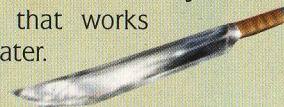
### COMBAT RIFLE (5 KEY)

Long-range rifle based on the Simonov SKS.



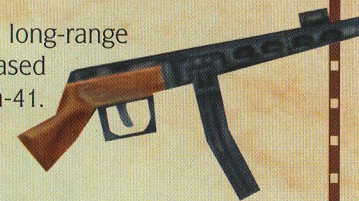
### MACHETE (6 KEY)

This is the most deadly weapon close up. Not an entirely pleasant weapon, but good for clearing obstructions. It's the only weapon that works under water.



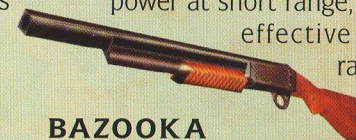
### SUBMACHINE GUN (7 KEY)

Medium- to long-range rapid fire based on the PPSH-41.



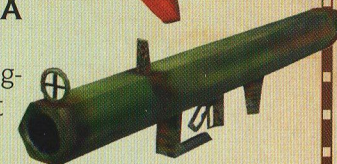
### PUMP ACTION SHOTGUN (8 KEY)

Based on the Browning model of the period, this weapon provides heavy power at short range, but less effective at long range.



### BAZOOKA (9 KEY)

Powerful long-range rocket launcher.



### SATCHEL CHARGE (P KEY)

A powerful timed charge. Indy needs to set it, then get out of the way, fast. These also go off if enemies step on them. These cannot be thrown.

### HAND GRENADE (G KEY)

Indy can throw this, but if he is on the same level, he still needs to run a little to escape damage.



## MACHINE PARTS

When the tower of Babel was destroyed, Marduk's disciples fled to different parts of the world carrying four critical parts of the Infernal Machine with them. Each part has its own power, and can in certain

cases be used as a weapon. Indy can only endure using parts for short periods without damage. Only when all four machine parts are returned can the Infernal Machine operate again.

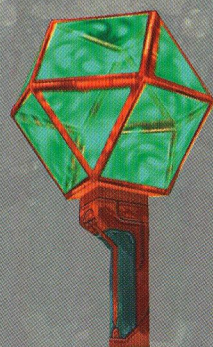


### URGON'S PART (Q KEY)

Found in the snows of Kazakstan. When used by Indy, it smashes open weakened walls.

### TAKLIT'S PART (W KEY)

Found in a volcano in the Philippines. When used by Indy, it confers invisibility.



### TOOL FROM BEYOND (T KEY)

Opens permeable membranes separating the Aetherium from our own world when Indy is on the other side. It resembles a machine part.

### AZERIM'S PART (E KEY)

Found among the artifacts of the mysterious Olmec civilization of Mexico. When used by Indy with strange crystals called the Jewels of Heaven, it causes levitation.



### NUB'S PART (R KEY)

Found in a tomb in the Sudan. When used by Indy, it powerfully energizes certain machinery of unearthly origin.



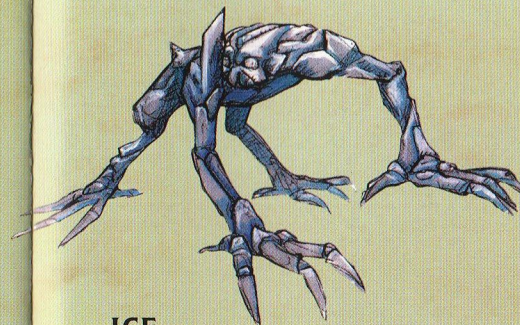
## ENEMIES

Each of the machine parts has a supernatural guardian or monster, keeping it safe from intruders.



### LAVA GUARDIAN

The Lava Guardian of the Palawan temple lives in a fiery lake and guards Taklit's part with the help of lava warriors.

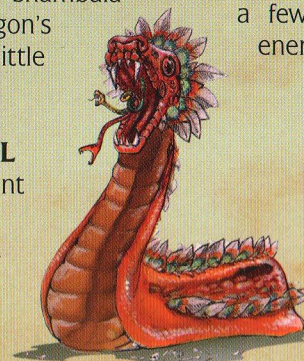


### ICE GUARDIAN

This icy ogre in the Shambala sanctuary guards Urgon's part with the aid of little ice minions.

### QUETZALCOATL

At Teotihuacan, a giant snake, Quetzalcoatl, guards Azerim's part.



## ETHEREAL MARDUK

Indy must defeat two different incarnations of Marduk before he can find the final machine part and return home.



### ROBOT GUARDIAN

Within Nub's Egyptian tomb, a giant bronze robot guards Nub's remains.

Along the way, Indy also encounters a virtual army of Communist soldiers, predatory wildlife, and poisonous creatures like spiders, scorpions and—oh, no!—snakes. Plus a few unpleasant otherworldly enemies thrown in.

## CREDITS

Project Designed,  
Written and Led by  
Hal Barwood

### THE JONES REALTIME 3D ENGINE

Lead Programmer  
Paul D. LeFevre

Engine Programmers  
Gary Keith Brubaker  
Patrick McCarthy  
Matthew D. Russell  
Steve Scholl  
Ife Olowe  
Randy Tudor

### THE JONES 3D WORLD

Lead Level Designer and  
Scripting  
Steven Chen

Level Design and  
Scripting  
Joseph Chiang  
Reed K. Derleth  
Geoff Jones  
Tim Longo  
Timothy R. Miller  
Christopher W. McGee  
Donald Sielke  
Paul "Skitoman"  
Zabierek

Continuity and Placement  
Specialist  
Jesse Moore

### THE ART OF JONES

Lead Artist and  
Conceptual Illustration  
William Tiller

Textures  
Kim Balestreri  
Kathy Hsieh  
Gregory A. Knight  
Karen Purdy  
Nathan Stapley  
Tim Y. Tao

### JONES IN MOTION

Lead Animator  
Derek Sakai

Animators  
Yoko (Yang-Ja) Ballard  
Anson Jew

### JONES 3D SHAPES

Character Design,  
Illustrations and Models  
Lea Mai Nguyen

3D Object Models  
Mike Dacko

### SPECIAL VISUAL EFFECTS

Visual Effects Animator  
and Video Compositing  
Josef Richardson

### ART PATH

Technical Artists  
Harley Baldwin  
Lissa Klanor

### ADDITIONAL SERVICES

Sound Programmer  
Mike McMahon

Installer/Launcher  
Programmers  
Darren Johnson  
Joe Ligman

Tools Programmer  
Amit Shalev

Special Programming  
Tasks  
Ingar Shu  
Hwei-Li Tsao

Animators  
John McLaughlin  
Vamberto Maduro

Visual Effects  
C. Andrew Nelson

Textures  
Catherine "Cat" Tiller

Voices  
Indiana Jones  
Doug Lee

Sophia Hapgood  
Tasia Valenza

Gennadi Volodnikov  
Victor Raider-Wexler

Simon Turner  
Bruce McGill

Holy Woman  
Carolyn Seymour

Nubian Boy  
Grey Delisle

Soviet Military  
Personnel

Adam Gregor  
Andrew Kochergin

Phil Proctor  
Vladimir Romanov

Marduk  
Adam Gregor  
Doug Lee

Voices Produced and  
Directed by  
Darragh O'Farrell

Voice Editors  
Coya Elliott  
Cindy Wong

Voice Department  
Manager  
Tamlynn Niglio

Voice Production  
Coordinator  
Peggy Bartlett

Voices Recorded at  
Screenmusic Studios  
Studio City, CA

LucasArts  
Entertainment  
Company, LLC  
San Rafael, CA

### MUSIC AND SOUND EFFECTS

Music Composed and  
Synthesized by  
Clint Bajakian

Sound Design and  
Effects by  
David Levison

Original Indiana Jones  
Theme Composed and  
Conducted by  
John Williams

Sound Assistants  
Michael Frayne  
Jory Prum

Sound Department  
Coordinator  
Kristen Becht

### PRODUCTION

Production Manager  
Wayne Cline

Production Coordinators  
Jennifer O'Neal  
Kellie Tauzin

CD Burning Goddesses  
Wendy "Cupcake"  
Kaplan  
Kellie "Twinky"  
Walker

### QUALITY ASSURANCE

Lead Testers  
John "Buzz" Buzolich  
John "Grandpa"  
Hannon

Assistant Lead Tester  
Brent Jay Andaya  
Jalipa II

Testers  
Jo Ashburn  
Phillip "Philthy" Berry  
Gabrielle Brown

Shang-Ju Chen  
G.W. Childs  
Jeffrey Day

John Drake  
Erik Ellicock  
Bryan Erck

Derek Flippo  
Catherine Haigler  
Chane Hollander  
Hans Larson  
Ricardo Liu  
Troy Mashburn  
Chuck McFadden  
Matthew "Cyrus"  
McManus  
Orion Nemeth  
Todd Stritter  
Torii Swader  
Joseph Talavera II  
Julio Torres

Lead International Tester  
Jeff Sanders

Compatibility Supervisor  
and Technical Writer  
Chip Hinnenberg

Compatibility Testers  
Karsten Agler  
Darren Brown  
Jim Davison  
Marcus P. Gaines  
Doyle Gilstrap  
Jason Lauborough  
Dan Mihoerck  
Charles W. Smith  
Scott Tingley  
Aaron Young

Compatibility Tester and  
Electronic Manual  
Compositor  
Lynn Taylor

### PRODUCT SUPPORT

Product Support  
Manager  
Paul Purdy

Hint Line Supervisor  
Tabitha Tosti

### MARKETING

Marketing Manager  
Tom Byron

Publicity  
Tom Sarris  
Josh Moore

Package Design  
Soo Hoo Design

Package Illustrations  
Drew Struzan  
Bruce Wolf

Manual Written by  
Jo "Captain Tripps"  
Ashburn  
Mollie Boero

Manual Design by  
Patty Hill

Marketing Coordinator  
Anne Barson

International  
Production/Localization  
Supervisor  
Adam Pasztory

International  
Development Specialist  
Theresa O'Connor

International Production  
Coordinator  
Benjamin Becker

International  
Development Manager  
Aric Wilmunder

International Marketing  
Coordinator  
Lee Susen

International Public  
Relations Coordinator  
Kathy Apostoli

## MUSIC CREDITS

Original Music  
by Clint Bajakian

"Raiders of the Lost Ark" Theme  
by John Williams

"The Raiders March"  
from the motion picture  
*Raiders of the Lost Ark*,  
written by John Williams,  
published by Bantha Music (BMI),  
administered by Ensign Music  
Corporation for the world.

## HOW TO CONTACT LUCASARTS

LucasArts has a variety of services to  
provide you with information about our  
latest games, hint and gameplay assis-  
tance, and technical support.

### HINT LINE U. S.

If you need a hint, you may call our  
automated Hint Line. This service costs  
95 cents per minute, requires a touch  
tone phone, and you must be at least 18  
years old or have a parent's permission to  
call. The number is **1-900-740-JEDI**  
(1-900-740-5334). The option to speak  
with a live Hint Operator is also available  
from this number. (The average call  
length is three minutes.)

### CANADA

Our Hint Line is also available to  
our Canadian customers. This service  
costs \$1.25 (U.S.) per minute, requires a  
touch tone phone, and you must be

### A TIP OF THE HAT

3D Engine  
Development by  
Ray Gresko  
Rob Huebner  
Che-Yuan Wang  
Winston Wolff

Smush Video  
Compression System by  
Vince Lee  
Andre Bremer

Programming Support by  
Chris Kastensmidt  
Bob I. Judelson  
The Intel Corporation

A Grateful Bow to  
Harrison Ford  
Steven Spielberg

Very Special Thanks to  
George Lucas

at least 18 years old or have a parent's  
permission to call. The phone number is  
**1-900-677-JEDI (1-900-677-5334)**. (The  
average call length is three minutes.)

### WHERE TO FIND US ONLINE

You can visit the LucasArts Web site at  
**www.lucasarts.com**. From there, you  
can access the Technical Support area  
where you will have the option to  
receive online technical support  
through Yoda's Help Desk, browse tech-  
nical documents, or leave a message for  
an online representative.

### YODA'S HELP DESK

We are proud to feature Yoda's Help  
Desk, an interactive knowledge base,  
which is available in the Technical  
Support section of the LucasArts Web site  
at **www.lucasarts.com/support**. Yoda's  
Help Desk offers solutions to technical  
issues based on information you pro-  
vide. Visitors to Yoda's Help Desk will be  
able to receive technical support 24  
hours a day, seven days a week. If Yoda's  
Help Desk is unable to provide you with  
a solution to your problem, you will be  
given the option to submit an e-mail  
message to an online representative.

### TECHNICAL SUPPORT PHONE NUMBER

This number is for technical assistance  
only. Hints will not be given out over the  
Technical Support line.

If you require technical assistance,  
please read through the Troubleshoot-

ing Guide and Readme files provided on the game CD. The Troubleshooting Guide has solutions to many common problems you may experience with the game.

When contacting Technical Support, please have the following information available: computer brand and model, processor type and speed, video card, sound card, CD-ROM drive brand and model, RAM.

You can reach our Technical Support department by calling **1-415-507-4545**. We are available to help you Monday-Thursday 8:45 a.m.-5:30 p.m. and on Friday 8:45a.m.-4:30p.m. (Pacific Standard Time). We are closed daily 11:45 a.m.-1:00 p.m.

### TECHNICAL SUPPORT FAX

For your convenience, we also offer the option of faxing us with your technical questions at: **1-415-507-0300**.

When sending us a fax, please include your name, return fax number with the area code, and a voice phone number so we can contact you if we experience any problems when trying to fax you back.

### TECHNICAL SUPPORT MAILING ADDRESS

LucasArts Entertainment Company LLC  
P. O. Box 10307  
San Rafael, CA 94912  
Attn.: Product Support

### LUCASARTS COMPANY STORE

You can visit our secure online store at [www.lucasarts.com/companystore](http://www.lucasarts.com/companystore). The Company Store offers a complete selection of LucasArts games, hint books and logo gear. Reach us by mail at: LucasArts Company Store  
P. O. Box 14797  
Fremont, CA 94539  
Or fax us at **1-925-275-1190**.

## SOFTWARE LICENSE AND LIMITED WARRANTY

PLEASE READ THIS LICENSE CAREFULLY BEFORE INSTALLING OR USING THE SOFTWARE. BY USING THE SOFTWARE, YOU ARE AGREEING TO BE BOUND BY THE TERMS OF THIS LICENSE. IF YOU DO NOT AGREE TO THE TERMS OF THIS LICENSE, DO NOT INSTALL OR USE THE SOFTWARE, DELETE THE SOFTWARE AND ALL RELATED FILES FROM YOUR COMPUTER, AND PROMPTLY RETURN THIS PACKAGE AND ITS CONTENTS TO THE PLACE OF PURCHASE.

The computer software, artwork, music, and other components included in this product (collectively the "Software") are the copyrighted property of LucasArts Entertainment Company LLC and its licensors (collectively referred to as "LEC"). The Software is licensed (not sold) to you, and LEC owns all copyright, trade secret, patent and other proprietary rights in the Software. You may use the Software on a single computer. You may not: (1) copy (other than once for back-up purposes), distribute, rent, lease or sublicense all or any portion of the Software; (2) modify or prepare derivative works of the Software; (3) transmit the Software over a network, by telephone, or electronically using any means, except in the course of your network multiplayer play of the Software over authorized networks; (4) engage in matchmaking for multiplayer play over unauthorized networks; (5) design or distribute unauthorized levels; or (6) reverse engineer, decompile or disassemble the Software. You may transfer the Software, but only if the recipient agrees to accept the terms and conditions of this Agreement. If you transfer the Software, you must transfer all components and documentation and erase any copies residing on computer equipment. Your license is automatically terminated if you transfer the Software.

LEC warrants to the original consumer purchaser that the media furnished in this product will be free from defects in materials and workmanship under normal use for a period of ninety (90) days from the date of purchase (as evidenced by your receipt). If the media supplied as part of this product proves to be defective, and provided that the consumer purchaser returns the media to LEC in accordance with the instructions in this paragraph, LEC will replace the defective media: (a) free of charge to the consumer purchaser, if the media proves to be defec-

tive within the ninety (90) day period following the date of purchase, and (b) for a fee of \$5.00 per Compact Disc, if the media proves to be defective after the expiration of the ninety (90) day warranty period. To obtain a replacement CD, please return the CD only, postage prepaid, to LEC, at the address below, accompanied by proof of date of purchase, a description of the defect, and your name and return address, as well as a check for \$5.00 per Compact Disc if after expiration of the warranty period. LEC will mail a replacement to you.

You expressly acknowledge and agree that use of the Software is at your sole risk. Except for the limited ninety (90) day warranty on the media set forth above, the Software and any related documentation or materials are provided "AS IS" and without warranty of any kind. LEC EXPRESSLY DISCLAIMS ALL WARRANTIES, EXPRESS AND IMPLIED, INCLUDING, BUT NOT LIMITED TO, THE IMPLIED WARRANTIES OF MERCHANTABILITY, FITNESS FOR A PARTICULAR PURPOSE AND NONINFRINGEMENT. LEC DOES NOT WARRANT THAT THE FUNCTIONS CONTAINED IN THE SOFTWARE WILL MEET YOUR REQUIREMENTS, OR THAT THE OPERATION OF THE SOFTWARE WILL BE UNINTERRUPTED OR ERROR-FREE, OR THAT DEFECTS IN THE SOFTWARE WILL BE CORRECTED. THE ENTIRE RISK AS TO THE RESULTS AND PERFORMANCE OF THE SOFTWARE IS ASSUMED BY YOU AND YOU (AND NOT LEC) ASSUME THE ENTIRE COST OF ALL SERVICING, REPAIR AND/OR CORRECTION. SOME JURISDICTIONS DO NOT ALLOW THE EXCLUSION OF IMPLIED WARRANTIES, SO THE ABOVE EXCLUSION MAY NOT APPLY TO YOU.

UNDER NO CIRCUMSTANCES INCLUDING NEGLIGENCE SHALL LEC, OR ITS DIRECTORS, OFFICERS, EMPLOYEES OR AGENTS, BE LIABLE TO YOU FOR ANY INCIDENTAL, INDIRECT,

SPECIAL OR CONSEQUENTIAL DAMAGES (INCLUDING DAMAGES FOR LOSS OF BUSINESS PROFITS, BUSINESS INTERRUPTION, LOST DATA, LOSS OF BUSINESS INFORMATION, AND THE LIKE) ARISING OUT OF THE POSSESSION, USE, OR MALFUNCTION OF THE SOFTWARE, INCLUDING WITHOUT LIMITATION DAMAGE TO PROPERTY AND, TO THE EXTENT PERMITTED BY LAW, DAMAGES FOR PERSONAL INJURY, EVEN IF LEC OR AN LEC AUTHORIZED REPRESENTATIVE HAS BEEN ADVISED OF THE POSSIBILITY OF SUCH DAMAGES OR LOSS. SOME JURISDICTIONS DO NOT ALLOW THE LIMITATION OR EXCLUSION OF LIABILITY FOR INCIDENTAL OR CONSEQUENTIAL DAMAGES, SO THE ABOVE LIMITATION OR EXCLUSION MAY NOT APPLY TO YOU.

THIS WARRANTY GIVES YOU SPECIFIC LEGAL RIGHTS, AND YOU MAY HAVE OTHER RIGHTS DEPENDING ON THE LAWS IN YOUR STATE. YOU AGREE THAT THE LIABILITY OF LEC ARISING OUT OF ANY KIND OF LEGAL CLAIM (WHETHER IN CONTRACT, TORT, OR OTHERWISE) WILL NOT EXCEED THE AMOUNT YOU ORIGINALLY PAID FOR THE USE OF THE SOFTWARE.

If the Software is acquired under agreement with the U.S. government or any contractor therewith, it is acquired as "commercial computer software" subject to the provisions hereof, as specified in 48 CFR 12.212 of the FAR and, if acquired for Department of Defense (DoD) units, 48 CFR 227-7202 of the DoD FAR Supplement, or sections succeeding thereto.

This is a work of fiction. All of the characters and events portrayed in this game are fictional. Any resemblance to real persons, living or dead, or actual events, is purely coincidental.

©LucasArts Entertainment Company LLC. ©Lucasfilm Ltd. & TM. All rights reserved. Used under authorization.

LucasArts Entertainment Company LLC  
P.O. Box 10307, San Rafael, CA 94912.

