

# THE SOFTWARE TOYS CATALOG

CREATE

EXPLORE

DISCOVER



MAXIS

## CONTENTS

### New From Maxis

1

**EL-FISH**  
*The Electronic Aquarium*

2

**ROME**  
*Pathway to Power*

### Best Sellers

3

**A-TRAIN**  
and  
**A-TRAIN**  
**CONSTRUCTION**  
**SET**

4

**SIMLIFE**

5

**SIMANT**

6

**SIMCITY**

7

**SIMCITY**  
**ADD-ONS**

8

**SIMEARTH**

9

**ROBOSPORT**

10

**COMING SOON**

11

**MAXIS**  
**EDUCATION**  
**PRODUCTS**

12

**MAXIS**  
**BOOK SHOP**

13

**MAXIS MAXIMS**

## GREETINGS LIFE-FORMS,


Inside this Software Toys® catalog, you'll find:

- Two brand-new products:

**EL-FISH™**, *The Electronic Aquarium*, is a completely new type of software for creativity. El-Fish combines art, science, technology and life so you can create your own electronic fish and put them into aquariums of your own design.

**ROME**, *Pathway to Power™*, is our first adventure game. You are Hector, a slave. But you've got dreams of power, and if you've got the smarts and the guts, you could become Emperor.

- A slew of games for Microsoft® Windows™ including our newest entry: **SIMLIFE™** for Windows.
- Our full lineup of award-winning games and add-ons.
- The **MAXIS BOOK SHOP**, featuring books written especially for and about our Software Toys.
- And check out the **COMING SOON** section, including **SIMFARM™**, **SIMANT®** for Super NES® and **SIMCITY 2000™**.

 When you see this symbol, it means that education versions are available.

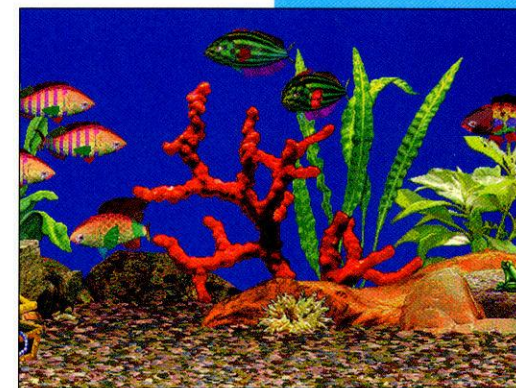
## EL-FISH™

*The Electronic Aquarium*

You've seen fish on a computer before ... but you've never seen fish this bright, this beautiful, this colorful—or this realistic. Designed and programmed in Moscow, El-Fish has the graphics and sound to really show off your high-end computer.

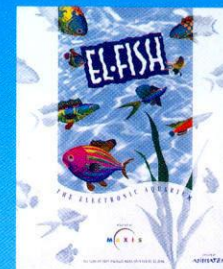
First, you breed new fish and put your computer to work to create 3-D animations for each fish. Then, choose from a vast library of backgrounds, gravel beds, plants, rocks, shells, and other still and animated objects, and arrange them for the proper aquascape. Just add music and your tank is done.

Watching your El-Fish aquascapes is as relaxing as watching real aquariums.



- **Catch, breed and evolve unlimited fish**
- **Design and create an unlimited number of tanks**
- **Grow computer-generated plants**
- **Compose animated slide shows of multiple tanks**
- **Import your own drawings, pictures and scans**
- **Computer-generated soundtracks in eight styles**
- **Includes a vast library of objects to put in your tanks**
- **No drawing or painting skills needed**
- **No spills, no odors, no tanks to clean and no dead fish**
- **Unlimited FREE electronic fish food!**

NEW!



"ANYONE WHO RECALLS WHAT REAL FISH FOOD SMELLS LIKE, OR WHO HAS TRIED TO CLEAN A REAL AQUARIUM, WILL HAVE CAUSE TO BE GRATEFUL FOR EL-FISH'S SIMULATED ENVIRONMENT."

—THE NEW YORK TIMES

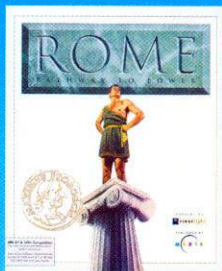
AVAILABLE FOR IBM/DOS  
\$59.95

COMING SOON FOR  
MACINTOSH

TO ORDER CALL 1-800-33-MAXIS



NEW!



# ROME

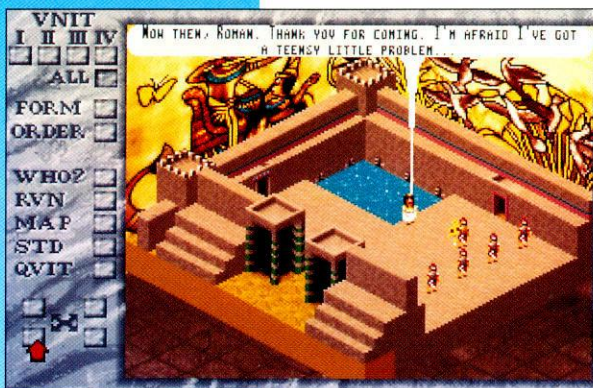
Pathway to Power™

You begin your adventure as a lowly slave. But you've got dreams. Dreams of freedom, of wealth, and of power. You intend to become the Emperor someday—and woe to the man, beast or computer that gets in your way.

Immersed in historical (and hysterical) Ancient Rome, you'll explore a world filled with strange lands and

stranger people. You'll experience adventure, discovery, danger, and intrigue—and a few good laughs—on your way to the top.

To master Rome, you'll need pride, ambition, and the willingness to do whatever it takes to get the job done.



- **A unique blend of strategy and adventure for fun and danger—just the right challenge for intermediate gamers and above**
- **Easy point-and-click interface—no typing required**
- **Six levels with different landscapes, plots and schemes**
- **Dynamic simulation has events and activities happening all around you**
- **256-colors, isometric 3-D views**
- **Outstanding sound and music—supports Ad Lib, Roland and Sound Blaster**
- **Experience Rome in English, German, French, Spanish or Italian**

“PLAYING ROME IS MORE FUN THAN THROWING PEOPLE TO THE LIONS. AND A LOT EASIER TO CLEAN UP WHEN YOU’RE DONE.”  
—JULIUS SEIZURE

# A-TRAIN™

The (Rail) Road to Riches

Sure A-Train has trains ... but there's a lot more to it than making tracks. This simulation gives you the triple challenge of Trains, Cities and Money: design and run a profitable railroad, grow a city and build a financial empire. The six scenarios will take all the organizational talent, planning skills and fiscal genius you've got. Maybe more.

And now that the A-Train Construction Set is included, you can create new scenarios for A-Train, modify existing games, or blow off the limitations of the game entirely and build your own railroad and surrounding city exactly the way you want it—without any monetary constraints.



- A-TRAIN:**
- **Simulated 3-D graphics**
  - **19 different train engines, up to 27 at a time**
  - **Invest in up to 24 OTC stocks**
  - **Build apartments, offices, factories, ski resorts, amusement parks and more**
  - **Multiple financial and status reports**
- A-TRAIN CONSTRUCTION SET:**
- **Move mountains, create rivers, lakes, oceans and islands**
  - **Add unlimited tracks**
  - **Test track placement and scheduling**



CHOSEN:  
“THE BEST OF 1992”  
—JOE SALEM, PC MAGAZINE

1993 BEST STRATEGY PROGRAM AWARD WINNER  
—SOFTWARE PUBLISHERS ASSOCIATION

AVAILABLE FOR IBM/DOS \$49.95

TO ORDER CALL 1-800-33-MAXIS



AVAILABLE FOR MACINTOSH, IBM/DOS AND AMIGA \$69.95

TO ORDER CALL 1-800-33-MAXIS

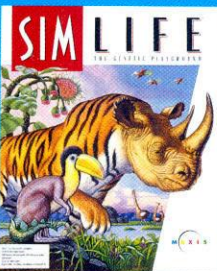


# SIMLIFE™

The Genetic Playground

Breaking the barriers between games and simulations, playing and learning—even between machines and living beings—SimLife gives you the power to create life itself.

Build your own ecosystem from the ground up, and try to keep it alive: mold the landform, customize the climate, manipulate time, change physics, then create life and let it loose on the unsuspecting landscape. Plants and animals interact with each other and their environment as they do in the “real world.” They even mutate and evolve into new species.



“...THE PERFECT PROGRAM FOR PEOPLE WHO HAVE THE URGE TO PLAY GOD.”  
—NEWSWEEK

1993 BEST SIMULATION PROGRAM AWARD WINNER  
—SOFTWARE PUBLISHERS ASSOCIATION

AVAILABLE FOR MACINTOSH, IBM/DOS AND WINDOWS  
\$69.95

TO ORDER CALL 1-800-33-MAXIS

# SIMANT®

The Electronic Ant Colony

Ants. You’ve shared your food, your home and your planet with them. You’ve stepped on them, sprayed them, cursed them and bombed them. Now you can *be* them. In SimAnt, you become the leader of an ant colony trying to survive in a backyard, continually being challenged by the onslaught of invaders from another colony. If the other ants don’t get you, there are spiders, ant lions, floods, lawn mowers, deadly pesticides and even human feet to contend with.

Winner of numerous awards, including Software Publishers Association’s Best Simulation, SimAnt is based on ant biology and behavior.



- **On-screen tutorial gets you up and running quickly**
- **Quick Game mode launches you right into the thick of things**
- **Strategic extended games give you extra challenge**
- **Experimental mode will feed your curiosity**
- **On-line help and information on real ants for your brain**
- **Yummy caterpillars and disgusting noises**
- **Nifty manual includes a comprehensive science section**

“A COMPUTER GAME THAT CREATES A STRANGE REAL WORLD... BOTH ENTERTAINING AND EDUCATIONAL ...A SURVIVAL CONTEST AND A SIMULATION ... FUN.”  
—NEWSWEEK

AVAILABLE FOR MACINTOSH, IBM/DOS, WINDOWS AND AMIGA  
\$49.95

TO ORDER CALL 1-800-33-MAXIS

# MAXIS SYSTEM REQUIREMENTS CHART

TITLE	IBM/100% COMPATIBLES SPECIAL REQUIREMENTS	RAM	WINDOWS SPECIAL REQUIREMENTS	RAM	MACINTOSH SPECIAL REQUIREMENTS	MONO SYS 6.X RAM	MONO SYS 7.X RAM	COLOR SYS 6.X RAM	COLOR SYS 7.X RAM	AMIGA SPECIAL REQUIREMENTS	LOW-RES RAM	HIGH-RES RAM
<b>El-Fish</b>	I2, I3, I5, I6, I12, I13, I16, I23, I28	4 MB	not available		not available					not available		
<b>Rome</b>	I10, I14, I18, I24, I29, I31	640K	not available		not available					not available		
<b>A-Train/A-Train Construction Set</b>	I14, I19, I25, I30	640K	not available		M3, M5	1 MB	1.5 MB	2 MB	2.5 MB	A1, A2, A4, A8	1 MB	1.5 MB
<b>SimLife</b>	I2, I5, I8, I15, I17, I24	2 MB	W1, W3, W4, W8, W10	4 MB	M2	2 MB	2.5 MB	2.5 MB	3 MB	not available		
<b>SimAnt</b>	I14, I20, I21, I26	640K	W2, W9	2 MB		1 MB	2 MB	2 MB	2.5 MB	A4, A8	1 MB	2 MB
<b>SimCity</b>	I1, I4, I7, I9, I10, I11, I22, I26	640K	W2, W9	2 MB	M1, M5	1 MB	2 MB	2 MB	2.5 MB	A3, A5, A6, A7		
<b>SimCity Graphics Sets 1 &amp; 2</b>	I1, I4, I7, I10, I11, I22, I27	640K	W7		M1	1 MB	2 MB	2 MB	2.5 MB	A5, A7		
<b>SimCity Terrain Editor</b>	I1, I4, I7, I9, I10, I11, I22, I27	640K	W7		M1, M4, M6	1 MB	2 MB			A3, A5, A6, A7		
<b>SimEarth</b>	I10, I14, I26	640K	W1, W5, W6, W9	2 MB		1 MB	2 MB	2 MB	2.5 MB	A1, A4, A8	1 MB	2 MB
<b>RoboSport</b>	not available		W2, W4, W9	2 MB	M5	1 MB	2 MB	2 MB	2.5 MB	A4, A8	1 MB	2 MB

DID YOU REMEMBER TO:  
 Indicate your computer type, disk size, and disk density on the order form?  
 Make your check payable to Maxis?  
 Include your daytime phone number?

### IBM/100% Compatible Computers

**Minimum System Requirements (except where noted):**  
 IBM/100% Compatibles, 286 or above; 12 MHz; hard disk;  
 mouse; MS-DOS 3.1 or above; VGA, EGA, MCGA, CGA,  
 Hercules mono; VGA, EGA, MCGA, Tandy color; PC  
 Speaker, Ad Lib, Sound Blaster, Roland MT-32 sound

- I1 PC/XT and above required
- I2 386 and above required
- I3 Math co-processor recommended
- I4 No minimum clock speed
- I5 16 MHz clock speed required
- I6 20 MHz clock speed recommended
- I7 512K RAM required for mono only
- I8 4 MB RAM recommended
- I9 Hard disk recommended
- I10 Mouse recommended
- I11 DOS 2.11 and above required
- I12 DOS 3.3 and above required
- I13 Does not support monochrome video cards
- I14 VGA, EGA, MCGA, Hercules mono
- I15 VGA mono

- I16 VGA, SVGA color  
(640 x 400 mode required for high-resolution)
- I17 VGA, SVGA color
- I18 VGA color
- I19 VGA, EGA color
- I20 VGA, EGA, Tandy color
- I21 PC Speaker, Ad Lib, Sound Blaster, Roland MT-32,  
Tandy, Sound Master sound
- I22 PC Speaker
- I23 1.44 MB 3.5" disks included
- I24 1.2 MB 5.25" and 720K 3.5" disks included
- I25 720K 3.5" disks included
- I26 360K 5.25" and 720K 3.5" disks included
- I27 Either 360K 5.25" or 720K 3.5" disks available
- I28 1.2 MB 5.25" disks available FREE
- I29 360K 5.25" disks available FREE
- I30 360K 5.25" or 1.2 MB 5.25" disks available FREE
- I31 FREE Hints and Tips book with registration

### Windows

**Minimum System Requirements (except where noted):**  
 IBM/100% Compatibles, 286 or above; 12 MHz; hard  
 disk; mouse; DOS 3.1 or above; VGA, SVGA, EGA; Win  
 3.1 and PC Speaker sound

- W1 386 and above required
- W2 386 and above recommended
- W3 20 MHz recommended
- W4 VGA, SVGA
- W5 VGA, SVGA, EGA, MCGA mono, Hercules
- W6 PC Speaker sound
- W7 SimCity required. DOS versions work with SimCity  
for Windows.
- W8 720K 3.5" disks included
- W9 1.2 MB 5.25" and 720K 3.5" disks included
- W10 1.2 MB 5.25" disks available FREE

### Macintosh

**Minimum System Requirements (except where noted):**  
 Macintosh Plus, Portable, or any members of the SE,  
 Classic, LC, II series, Performa, Centris, Powerbook or  
 Quadra families; hard disk; color or monochrome monitor;  
 System 6.0.2 or above

- M1 512Ke and above
- M2 SE and above
- M3 System 6.0.5 and above
- M4 Hard disk recommended
- M5 Hard disk required for color and recommended for  
monochrome
- M6 Monochrome only

### Amiga

**Minimum System Requirements (except where noted):**  
 A500, A600, A1000, A1200, A2000, A2500, A3000, and  
 A4000; Workbench 1.2 or above; hard disk recommended;  
 AmigaDOS 1.2 or above, AmigaDOS 2.0 compatible

- A1 AmigaDOS 1.3 or above required
- A2 Hard disk required
- A3 Both 16-color and 64-color versions included
- A4 Both low- and high-resolution versions included.  
De-interlacer recommended for high-resolution.
- A5 Low-resolution version only
- A6 512K RAM required for 16-color version
- A7 1 MB RAM required for 64-color version
- A8 High-resolution requires 1 MB Chip RAM or  
Graphics RAM

# MAXIS PRODUCT PRICE LIST

SOFTWARE TITLE	SOFTWARE					DOS TO WINDOWS UPGRADE*	C-64
	IBM/DOS	MAC	AMIGA	WINDOWS			
<b>El-Fish</b>	\$59.95 <sup>1</sup>						
<b>Rome</b>	\$49.95 <sup>2</sup>						
<b>A-Train/ Constr. Set</b>	\$69.95 <sup>3</sup>	\$69.95	\$69.95				
<b>SimLife</b>	\$69.95	\$69.95		\$69.95 <sup>4</sup>	\$19.95		
<b>SimAnt</b>	\$49.95	\$49.95	\$49.95	\$49.95	\$19.95		
<b>SimEarth</b>	\$49.95	\$49.95	\$49.95	\$49.95	\$19.95		
<b>RoboSport</b>		\$39.95	\$39.95	\$39.95			
<b>SimCity</b>	\$49.95	\$59.95	\$49.95	\$59.95	\$19.95	\$29.95	
<b>Graphics Set 1</b>	\$19.95 <sup>5</sup>	\$19.95	\$19.95				
<b>Graphics Set 2</b>	\$19.95 <sup>5</sup>	\$19.95	\$19.95				
<b>Terrain Editor*</b>	\$ 9.95 <sup>5</sup>	\$ 9.95	\$ 9.95				

### BOOKS

SimLife: Official Strategy Guide	\$18.95
Gaia—An Atlas of Planet Management	\$22.95
The Official Strategy Guide To SimEarth	\$18.95
The SimEarth Bible	\$14.95
Master SimCity/SimEarth	\$19.95
The SimCity Planning Commission Handbook	\$14.95
SimCity Strategies and Secrets	\$12.95
A-Train—The Official Strategy Guide	\$18.95
A-Train Railroading	\$16.95

\* Available only through Maxis.

- 1 Includes 3.5" 1.44 MB disks. 5.25" 1.2 MB disks are available.
- 2 Includes both 3.5" 720K and 5.25" 1.2 MB disks.  
5.25" 360K disks are available.
- 3 Includes 3.5" 720K disks.  
5.25" 1.2 MB and 5.25" 360K disks are available.
- 4 Includes 3.5" 720K disks. 5.25" 1.2 MB disks are available.
- 5 Includes either 3.5" 720K disks or 5.25" 360K disks.  
Please specify when ordering.

All other DOS and Windows packages include both 3.5" and 5.25" disks.

See System Requirements page for more information.

Prices and availability are subject to change without notice.



# SIMCITY®

The City Simulator

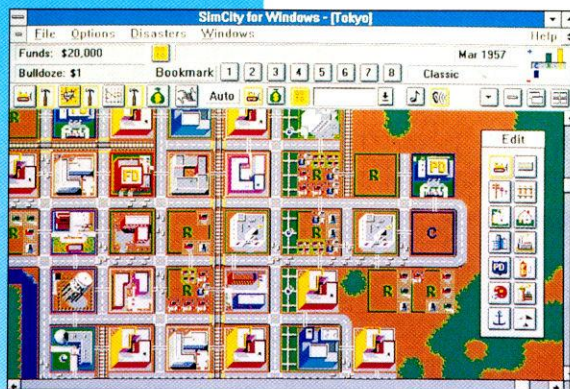
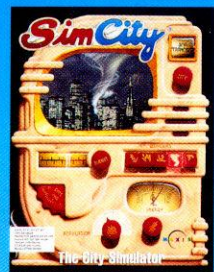
The original. The classic. The simulation that took the computer world by storm (well, by earthquake anyway).

Winner of more awards than you can count on your fingers and toes, SimCity makes you Mayor and City Planner, and dares you to design and build the city of your

dreams.

Detailed animation and sound effects bring simulated cities to life. Depending on your choices and design skills, Simulated Citizens (Sims) will move in and build homes, hospitals, churches, stores and factories, or move out in search of a better life elsewhere.

- **Select between eight different city scenarios**
- **Design and cultivate unlimited cities**
- **Guide your decision-making process with real-time graphs and demographic maps**
- **Reveal how popular (or unpopular) you are when viewing the public opinion poll**
- **Fight floods, earthquakes, fires, tornados, meltdowns and monsters**



"GAMES SIMPLY  
DON'T GET ANY  
BETTER THAN THIS."

—COMPUTE



AVAILABLE FOR  
MACINTOSH\* AND WINDOWS  
\$59.95

IBM/DOS AND AMIGA  
\$49.95

COMMODORE 64  
\$29.95

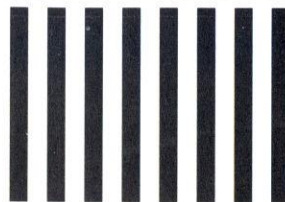
\*INCLUDES SIMCITY TERRAIN EDITOR

TO ORDER CALL 1-800-33-MAXIS



6

NO POSTAGE  
NECESSARY  
IF MAILED  
IN THE  
UNITED STATES



**BUSINESS REPLY MAIL**

FIRST CLASS MAIL PERMIT NO. 296 ORINDA, CA

POSTAGE WILL BE PAID BY ADDRESSEE

**MAXIS**

ATTN: Hey, Open Me First  
2 Theatre Square  
Suite 230  
Orinda, CA 94563-9907



would

re your  
credit  
properly  
the U.S.,

all  
in case

Y, OPEN  
MAXIS,  
in case

ding

handling  
or orders

TO ORDER CALL 1-800-33-MAXIS



7

FOR WINDOWS.

### SPECIAL DELIVERY

It is possible to ship your order via FedEx Economy Two-Day<sup>sm</sup> delivery for an additional \$3.00 (over Standard Shipping charges) or FedEx Standard Overnight<sup>®</sup> delivery for an additional \$10.00. Please include your daytime phone number in case there are any shipping questions. (NOTE: Special Delivery is not available to a P.O. Box-only address, so be sure to include a street or rural route number.)

### PAYMENT

We require U.S. funds only and will accept payment by check, money order, VISA or MasterCard. Purchase orders valued at \$50.00 or more will be accepted from schools, universities and government agencies.

### SALES TAX

CA, MA and TX residents, please add applicable sales tax.



2 Theatre Square  
Suite 230 Orinda, CA  
94563-3346  
Tel: 510-254-9700  
Fax: 510-253-3736

Federal Express trademarks used by permission.

TO ORDER CALL 1-800-33-MAXIS

# SIMCITY ADD-ONS

## SIMCITY TERRAIN EDITOR

Don't settle for randomly generated SimCity sites! Sculpt your city landscapes with the same skill, imagination and creativity you use to design your cities.

- **Place trees, forests, open land, lakes, rivers and oceans anywhere on the map**
- **Make a map of any imagined or existing city or area up to 100 square miles**
- **Use the Automatic Smoothing Function to give a realistic look to coastlines and forest borders**
- **Change the date and play level of your cities**
- **Program shipping routes**
- **Load your terrains into SimCity and bring your creation to life—in any of the Graphics Sets**



REQUIRES SIMCITY.  
ONLY AVAILABLE  
DIRECT FROM MAXIS  
FOR MACINTOSH,  
IBM/DOS AND AMIGA  
\$9.95

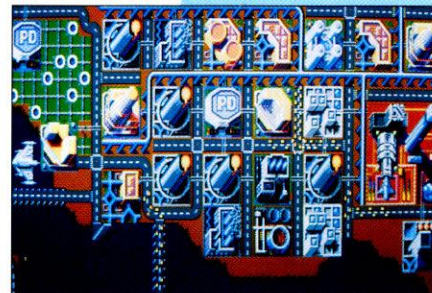
THE IBM/DOS VERSION  
ALSO WORKS WITH  
SIMCITY FOR WINDOWS.  
THE TERRAIN EDITOR  
IS INCLUDED WITH THE  
MACINTOSH VERSION.

## SIMCITY GRAPHICS™ SETS

Design and build cities in other times and other places with the SimCity Graphics Sets. These sets let you change SimCity's graphics and on-screen text so you can experience mayoral glory in the past and future.

**Set 1: Ancient Cities includes Ancient Asia, Medieval Times and Wild West.**

**Set 2: Future Cities includes Future USA, Future Europe and Moon Colony.**



REQUIRES SIMCITY.  
AVAILABLE FOR  
MACINTOSH, IBM/DOS  
AND AMIGA  
\$19.95 EACH

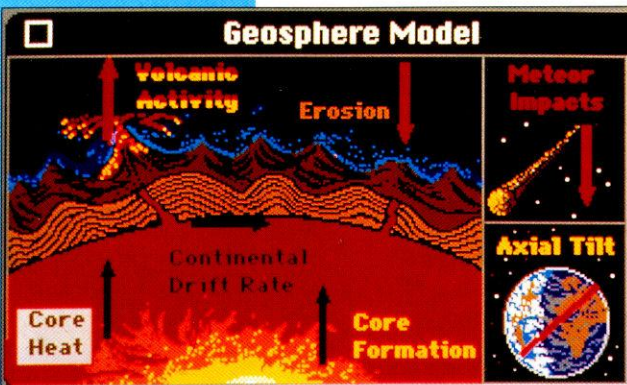
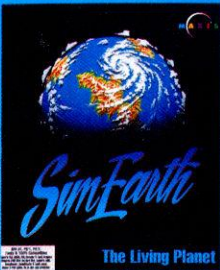
THE IBM/DOS VERSIONS  
WORK WITH SIMCITY  
FOR WINDOWS.

TO ORDER CALL 1-800-33-MAXIS

# SIMEARTH®

The Living Planet

Inspired by James Lovelock's Gaia hypothesis, SimEarth looks at the world as one interrelated living organism offering you the ultimate experience in planet management. Design and nurture planets from their creation through the evolution of life to the development of intelligence and technology that can reach for the stars.



Among other honors, SimEarth is a member of *Macworld's* Game Hall of Fame, the winner of *PC Magazine's* Award for Technical Excellence, plus the Software Publishers Association's Best Simulation of 1990.

- Choose from seven different planet scenarios
- Rule unlimited random worlds
- Terraform Venus and Mars
- View your worlds as flat projections or spinning globes
- Control the atmosphere, geosphere and biosphere
- Unleash volcanos, earthquakes, meteors and tidal waves
- Guide civilization into the future

"...QUICKLY LEARN HOW TO BUILD [YOUR] OWN VERSION OF PLANET EARTH."

-CNN, SCIENCE AND TECHNOLOGY REPORT

"[SIMEARTH]... OFFERS SOMETHING NO OTHER PROGRAM CAN..."

-TIME

AVAILABLE FOR  
MACINTOSH, IBM/DOS,  
WINDOWS AND AMIGA  
\$49.95

TO ORDER CALL 1-800-33-MAXIS

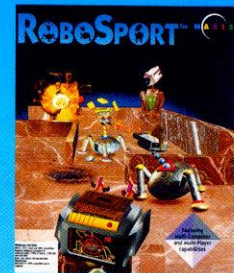


# ROBOSPORT®

The Thinking Man's Shoot-'em-up

Armed with bombs, bullets, missiles, grenades and more, you control teams of Robots that compete in five different sports: Survival, Treasure Hunt, Capture the Flag, Hostage and Baseball. By combining the tactical challenge of chess with the intensity of guerrilla warfare, RoboSport provokes total strategic mayhem. When the battle's over, survey your strategic process on an animated combat "movie" using a VCR-like playback mode.

Named "Most Innovative Game of 1991" by *Computer Game Review*, RoboSport now provides multi-player, multi-computer network support in addition to individual play.



- Choose from 24 battlefields
- Use the powerful icon-driven command language: with a simple point-and-click, robots can be instructed to commence their melee
- Take on any of the computer opponent's four personalities and kick Robutt!
- View your opponent's strategies as you replay battles via the RoboPlayer™ movie generator
- Challenge your friends (and enemies) through network support for up to four machines
- Use modem and serial link to mix and match games on Macintosh, Amiga or Windows versions

"ENDLESSLY VARIED, VISUALLY ATTRACTIVE, FULL OF ACTION BUT REQUIRING STRATEGY TO WIN..."

-PC GAMES MAGAZINE

"...AN ELEGANT MULTITASKING WAY OF WORKING OUT AGGRESSION..."

-PC GAMES MAGAZINE

AVAILABLE FOR  
MACINTOSH, WINDOWS  
AND AMIGA  
\$39.95

TO ORDER CALL 1-800-33-MAXIS



# COMING SOON

## **SIMFARM™** — *SimCity's Country Cousin*

Experience the joys, trials and tribulations of running a farm—without waking up at five in the morning.

Start with a plot of good farmland. Do you want a small family farm—or an agricultural empire? Do you want to produce food for the local town—or feed the world's hungry masses? Do you use the latest chemical fertilizers and pesticides—or run an “organic” farm? It's up to you.



Plow your fields, sow your seeds, harvest your crops and sell them at market. Easy? Sure, except for soil depletion, crop rotation, changing markets and diminishing farmlands—not to mention locusts, droughts, dust storms, floods ....

## **SIMANT® FOR SUPER NES®**

The ants have escaped from computers all over the world and are headed for the nearest Super NES. Get out the bug spray!

Enhanced graphics and sound make exploring simulations a totally new concept for Super NES. The Quick Game has eight different levels that pit you against evil red ants with each level getting harder. The Full Game challenges players to take over the house and drive out the humans. By directly controlling one ant and manipulating ant caste and behavior, you'll help your ant colony overcome obstacles and lead your fellow ants to victory!



## **SIMCITY 2000™**

The classic simulation game of city management isn't alone any more: Here comes SimCity 2000! Not an upgrade, not a replacement, but something new. Something to stretch your mind, your skills and your computer to the limits while it pleases your eyes and empowers you to create cities into the next century.

# MAXIS EDUCATION PRODUCTS

Since we first published SimCity, we've been inundated with calls and letters from educators telling us how they use all our simulation games in classrooms from Kindergarten to Graduate School.

Simulations, including our Software Toys, lend themselves well to learning. They allow players to develop a feeling for and an understanding of complex systems by playing and experimenting. And because of their open-ended nature, our games encourage interdisciplinary learning, relating to many subjects at many grade levels.

To make using our simulations in schools easier, education versions of SimCity, SimEarth, SimAnt and SimLife are now available to schools and educators in a number of formats:

- **School Editions for the single user**
- **Lab Packs for up to 5 computers**
- **Site Licenses for 30 or 50 computers**

All Maxis Education Products come in a 3-ring binder, and include a Teacher's Guide with an explanation of how to fit the program into your curriculum, sample lessons and experiments, and extra activities.

For information on Education Products, pricing, and available books and materials, call Maxis Customer Service at 1-800-33-MAXIS.



“AFTER HAVING SEEN A DEMONSTRATION OF SIMCITY IN ACTION, I WAS BOTH EXCITED AND COMPELLED TO USE THIS PACKAGE ... TO HELP MY STUDENTS EXPERIENCE THINKING AND PROBLEM SOLVING IN A COMPLEX, EXPLORATIVE MANNER.”

—PAT JACOBSON,  
THE COMPUTING  
TEACHER

## AWARDS

**SimCity: Best Educational Program 1989**  
— Software Publishers Association

**SimCity: Software Award of Excellence 1990-91**  
— Technology and Learning

**SimEarth: Best Secondary Education Program 1990**  
— Software Publishers Association

**SimAnt: Best Educational Tool 1991**  
— Software Publishers Association

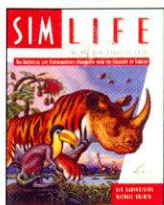
**SimLife: Best Simulation Program 1993**  
— Software Publishers Association

# MAXIS BOOK SHOP

## **SIMLIFE: THE OFFICIAL STRATEGY GUIDE**

by Ken Karakotsios and Michael Bremer

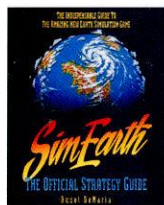
More than just hints, tips, secrets, and hidden controls, this book explains the inner-workings of the SimLife simulation. The first true Artificial Life experimenter's handbook. \$18.95



## **GAIA—AN ATLAS OF PLANET MANAGEMENT**

Edited by Dr. Norman Meyers

The ultimate source of information about our planet. A beautiful book, easy to read, amazing pictures and illustrations. \$22.95



## **THE OFFICIAL STRATEGY GUIDE TO SIMEARTH**

by Rusel DeMaria

With lots of great pictures, graphics and "real world" background information, the Official Strategy Guide

gives you all the tips, tricks, tutorials and reference material you'll need to get the most out of SimEarth. \$18.95

## **THE SIMEARTH BIBLE**

by Johnny Wilson

As well as guiding you through the basic workings of the game, The SimEarth Bible examines all the scenarios and relates them to our present and future lives. Extensive earth science, environmental and historical information. \$14.95

## **MASTER SIMCITY/SIMEARTH**

by Dan and Dennis Derrick

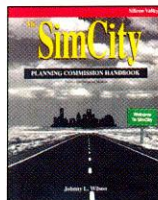
As the title suggests, this book covers both

SimCity and SimEarth, and includes performance tips, problem-solving hints, plus a chapter for classroom instruction. \$19.95

## **THE SIMCITY PLANNING COMMISSION HANDBOOK**

by Johnny Wilson

The authorized, in-depth, behind-the-scenes guide to SimCity. Lots of examples that use SimCity to explore today's urban issues. \$14.95



## **SIMCITY STRATEGIES AND SECRETS**

by Nick Dargahi

Chock-full of hints and tutorials, this book covers all SimCity features and guides you through all the scenarios. \$12.95



**New!**

## **A-TRAIN RAILROADING**

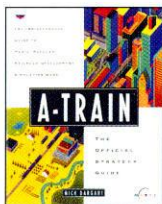
by Ralph Roberts

Playing tips, railroad lore and historic photographs set the mood, fill in the background and help you do your best in A-Train. Also covers A-Train Construction Set. \$16.95

## **A-TRAIN—THE OFFICIAL STRATEGY GUIDE**

by Nick Dargahi

Filled with techniques, strategies, hints, secrets, and background material, this guide is your best bet for playing A-Train for fun and profit. Also covers A-Train Construction Set. \$18.95



## MAXIS MAXIMS

### **THE MAXIS GUARANTEE**

We want you to be happy. We do our best to make software that is both fun and trouble-free, but if there is a problem, let us know. If you are not completely satisfied with your purchase, for any reason, you may exchange it for a different Maxis Software Toy of equal or lesser value, or request a full cash refund. For return/exchange information, contact Maxis Customer Service or just send back the program with your dated sales receipt within 30 days of purchase and specify your choice of another Software Toy or cash. Dealers and Distributors are not eligible.

### **DISK WARRANTY**

Maxis provides a 90-day limited warranty on the recording media. For disk replacement contact Maxis Customer Service or Technical Support.

### **MAXIS CUSTOMER SERVICE**

For warranty disk replacement, return/exchange information, locations of nearest software retailers, catalog orders, direct order status, shipping information, or general stuff, contact Maxis Customer Service toll-free at: 1-800-336-2947 (1-800-33-MAXIS), M-F 6:00AM-6:00PM PDT, Fax 510-253-3736, or by mail at Maxis Customer Service, 2 Theatre Square, Suite 230, Orinda, CA 94563-3346.

### **MAXIS TECHNICAL SUPPORT**

For technical questions dealing with hardware and software compatibility, startup problems, system errors or other unexplained phenomena, refer to your manual and addendum, then contact Maxis Technical Support: 510-253-3755 (M-F 7:00AM-6:00PM PDT), Fax 510-253-3736, or by mail at Maxis Technical Support, 2 Theatre Square, Suite 230, Orinda, CA 94563-3346. You can also receive on-line support on the MAXIS BBS via modem at 510-254-3869. For best results, please be at your computer when you call. We can solve most problems in five minutes or less.

**THE MAXIS BBS** provides on-line access to the latest Software Toy demos, updates, extra files, swap-able saved games, and the Technical Support message base. There is no charge for Maxis BBS usage, and full user access is granted upon completion of a brief questionnaire. We run at 14,400 and all lower baud rates and require a setting of 8 data bits, no parity and 1 stop bit (8-N-1).

### **WE ALSO PROVIDE ON-LINE SUPPORT ON THE FOLLOWING SUBSCRIPTION SERVICES:**

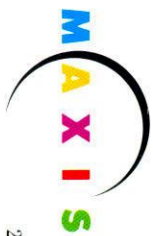
**America OnLine:** Keyword "Maxis"; E-Mail "Maxis." AOL can be obtained by calling 1-800-827-6364 and asking for a free introductory sign-on kit. Five hours of free time are provided with the first month.  
**CompuServe:** Go "gambpub" and select "Maxis" (section 8); CompuServe can be obtained by calling 1-800-524-3388 and asking for operator #420 to receive a free introductory membership, \$15 usage credit, and a month's worth of basic services free.  
**GENie:** Scorpio's Roundtable, Maxis Area; E-Mail "Maxis." GENie can be obtained by calling 1-800-638-9636. There is no initial sign-on fee.  
**AppleLink:** E-Mail "D4459"  
**Prodigy:** E-Mail address is MAXI99A

TO ORDER CALL 1-800-33-MAXIS

Maxis brings you a unique type of computer entertainment that we call Software Toys.® When you play with our toys, you set your own goals and decide for yourself when you've reached them.

The fun and challenge of playing with our toys lies in exploring the worlds you create out of your own imagination. You're rewarded for creativity, experimentation, and understanding, with a healthy, thriving universe to call your own.

Our Software Toys entertain and educate. We hope that after you have played with them, you'll "look beyond the game" and see the world around you with greater satisfaction and appreciation.



2 Theatre Square  
Suite 230 Orinda, CA  
94563-3346