

## THIS BOX CONTAINS:

(1) **CD** (your game).

**Crusader Playguide** (24 pp.) which tells you how to control the Silencer and gets you into combat.

**Reference Card** (6 pp.) listing all keyboard, joystick and game pad commands in the game.

**Install Guide** (32 pp.), which is what you're reading now, including troubleshooting tips, steps for creating a boot disk and *Windows 95* information.

**Top-Line** — your daily lunar newsletter, courtesy of the Lunar Mining Cartel.

**Registration Card** — we'd love to know who you are.

*If you're running Crusader: No Regret from a Windows 95 system, go to page 3.  
If you're running the game from a DOS-based system, go directly to page 12.*

# CRUSADER: NO REGRET™

## INSTALL GUIDE

Welcome to *Crusader: No Regret*. This guide begins with installation instructions for people who are about to play the game for the first time. To avoid compatibility or memory problems, please take a moment to confirm that your machine matches the system requirements. The basic requirements are listed on the bottom of the *Crusader: No Regret* box. A detailed list of system requirements and recommendations are in **System Requirements**, p. 32.

*Note: Disk compression of any kind will result in substantially increased load times. We cannot guarantee the compatibility of our games with disk compression utilities (such as DBLSpace, etc.). For better performance, use a drive without disk compression.*

*Note: Crusader: No Regret is native to DOS. It can **not** be installed under Windows 95, and it **will not** run under Windows 95. To run the game on a computer using Windows 95, you will have to either **reboot** to DOS (it is **not** sufficient to use the DOS prompt) or **create a shortcut** to Crusader as described on p. 7. We strongly recommend that you create a shortcut.*

## TABLE OF CONTENTS

WINDOWS 95.....	3
QUICK INSTALL.....	3
ORIGIN GATEWAY FOR WINDOWS 95.....	4
WINDOWS 95 INSTALLATION PREP.....	6
README File.....	6
Pre-Installation Procedures.....	6
CREATING A SHORTCUT.....	7
Using the Shortcut Maker.....	7
Editing Your Crusader Shortcut.....	7
WINDOWS 95 TROUBLESHOOTING.....	10
DOS-BASED SYSTEMS.....	12
QUICK INSTALL.....	12
Online Documentation and Other Extras.....	12
MS-DOS INSTALLATION PREP.....	13
README.TXT File.....	13
Pre-Installation Procedures.....	13
BOOT DISKS.....	14
Checking Out the Foundation.....	14
Using the Crusader Boot Disk Maker.....	15
Editing Your Boot Disk.....	15
To Use Your New Boot Disk.....	17
OTHER INSTALLATION CONCERNS (MS-DOS AND WINDOWS 95).....	18
INSTALLING VESA-COMPLIANT DRIVERS.....	18
CHANGING SOUND CARD CONFIGURATION.....	19
INSTALLATION DETAILS.....	21
Disk Cache Programs.....	22
TROUBLESHOOTING.....	22
ORIGIN TECH SUPPORT/CUSTOMER SERVICE.....	26
CRUSADER: NO REGRET CREDITS.....	29
SYSTEM REQUIREMENTS.....	32

## WINDOWS 95

### QUICK INSTALL

*Crusader: No Regret* is native to DOS. This section will explain the best way to move between *Windows 95* and DOS to play *Crusader*.

**Note:** Computers with factory-installed *Windows 95* may not have DOS-based hardware drivers pre-installed. To play *Crusader*, you will need drivers that allow your CD drive, sound card and (if desired) mouse to be run out of DOS mode. If you do not have these drivers on your system, you should contact your computer's manufacturer for information on obtaining the correct drivers.

1. Turn on your computer and wait for *Windows 95* to load.
  2. For useful prep suggestions, see **Windows 95 Installation Prep**, p. 6.
  3. Insert the *Crusader: No Regret* disc into the CD-ROM drive.
  4. The gateway interface will automatically open. (If it doesn't, it's probably because Auto Insert Notification is turned off on your Control Panel — you can call the gateway through **My Computer** by going to your CD-ROM drive, opening the GATE folder and double-clicking the GATEWAY icon.)
  5. Click on the SHORTCUT TO DOS option on the gateway screen.
  6. Follow the prompts on-screen to create a shortcut to DOS.
  7. Click on the PLAY GAME button, or close the gateway and double-click on the shortcut icon on the desktop, to reboot to DOS.
  8. Go to your CD-ROM drive by typing the drive name (usually D:) at the DOS prompt.
  9. Type INSTALL .
- Follow the on-screen instructions. For more explanation, see **Installation Details**, pp. 21.

### Starting the Game:

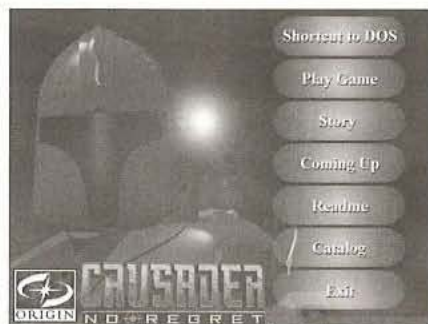
To re-enter *Windows 95* after playing *Crusader*, type EXIT at the DOS prompt. After installation, the install program will take you to the DOS prompt. Type CD [your *Crusader: No Regret* directory] , then REGRET to play.

To re-enter the game from *Windows 95*, click on the PLAY CRUSADER button in the gateway, or the *Crusader* shortcut icon on the desktop. Your computer will reboot to MS-DOS mode. Type REGRET at the DOS prompt to start the game.

## ORIGIN GATEWAY FOR WINDOWS 95

The gateway is a utility to make it easier to move between *Windows 95* and *Crusader: No Regret*, as well as providing easy access to other features included on your *Crusader* disk. If you're in *Windows 95* (and you do not have Auto Insert Notification turned off – see Step 4 on page 3) the gateway should automatically appear any time you put the *Crusader* CD in your CD-ROM drive.

The gateway is a simple point-and-click interface. Just select the option you want and click on it. Available options are explained below:



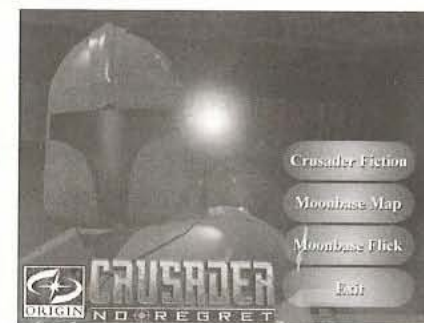
**SHORTCUT TO DOS:** Provides two options for getting your *Windows 95* computer into DOS mode to play *Crusader*. This button takes you to a sub-menu with the following options.

- SHORTCUT** Creates a desktop shortcut icon that will reboot you to DOS mode.
- BOOT DISK** Creates a boot disk that will allow you to boot your computer directly into DOS mode to play the game.
- HELP** Opens a WinHelp file with more information on shortcuts and boot disks.
- EXIT** Returns you to the gateway main screen.



**PLAY GAME:** Acts as an easy shortcut to gameplay. It will reboot your computer to DOS mode where you may change to your installed directory and type REGRET.

**STORY:** Material that will shed more light on the world of *Crusader: No Regret*.



**CRUSADER FICTION** This allows you to view documents which provide more background information on the Resistance, the WEC and the Lunar Mining Cartel. These documents are in WinHelp format, and can be viewed as any normal WinHelp file.

**MOONBASE MAP** This button brings up a full-screen map of the Lunar Mining Cartel's DarkSide Base.

**MOONBASE FLICK** Takes you to a quick overview of DarkSide Base.

**EXIT** Returns you to the gateway screen.

**COMING UP:** In addition to the catalog (see below), previews of other Electronic Arts games are included in the gateway. See the README file for more information on these extras.

**README:** Opens a WinHelp version of the README file, which contains important last-minute information about the game.

**CATALOG:** This option opens ORIGIN's interactive catalog, with information on all the latest ORIGIN games.

**END:** Closes the ORIGIN gateway program.

## WINDOWS 95 INSTALLATION PREP

*Note: Crusader is native to DOS. If you have a Windows 95 system, please create a shortcut to run the game in DOS, as described below.*

### README FILE

To view an important text file that contains last-minute changes in the game or documentation, refer to the README file.

- Insert the *Crusader: No Regret* disc into your CD-ROM drive.
- Wait for the gateway screen to appear.
- Click on the README button.
- You can print this file by selecting **Print** from the **File** menu at the top of the window the text is displayed in.

### PRE-INSTALLATION PROCEDURES

Before installing any piece of software, it is critical that your hard drive be in proper working order. *Windows 95* provides the disk tools SCANDISK and DEFRAG to ensure the hard drive is working correctly. Once you've tested your hard drive, you should create a shortcut. (You can also create a normal boot disk, but a shortcut is recommended.)

#### 1. First you should run SCANDISK.

Left-click on the **START** button.

Move the mouse up and highlight **Programs**.

From **Programs** a new menu will come up. In that menu select **Accessories** (usually at the top).

Yet another menu will appear — within that menu select **System Tools**.

Highlight **ScanDisk**, left-click on it and a menu will pop up.

Once activated, make sure there is a check mark in the **Automatically Fix Errors** box and select the hard drive to which you are installing *Crusader: No Regret* (i.e., if you are installing the game on drive C:, make sure C: is highlighted).

Once everything is set up correctly, click **START** to have the program scan the drive and correct any errors.

#### 2. Next, run DEFRAG.

In order to activate **DEFRAG**, go to **System Tools** (as in previous step).

Highlight and click on **Disk Defragmenter** and a menu will come up.

As with **SCANDISK**, select the drive to which you are installing *Crusader: No Regret* and left-click **OK**.

## CREATING A SHORTCUT

### USING THE SHORTCUT MAKER

Before you begin, make sure the *Crusader: No Regret* disc is in your CD-ROM drive, *Windows 95* is running, and the gateway is visible.

1. Click on the **Shortcut to DOS** button on the gateway main menu.
2. Click on **Shortcut to DOS**.
3. When you get the "next" prompt, click on **OK**.



Now you can click on the **Play** button from the gateway main menu, or on the shortcut icon on your desktop to play or install *Crusader*. Your machine will reboot and place you at the DOS prompt. Change to the directory you installed to, and type **REGRET** to play the game.

If the game fails to run after using the shortcut maker, you will need to edit your shortcut (see the next section).

*Note: To return to Windows 95 from a DOS prompt, type **EXIT** [Enter].*

### EDITING YOUR CRUSADER SHORTCUT

If you receive an error message, or the computer returns to DOS after using your shortcut to *Crusader*, you should follow the steps below to edit your shortcut.

1. Exit the gateway.
2. Right-click on the *Crusader* shortcut icon.
3. Left-click on **Properties**.
4. Left-click on the **Program** tab.
5. Make sure the **Close on Exit** box is checked.
6. Left-click on the **Advanced** button.
7. Check the **MS-DOS Mode** box.
8. Check **Specify a New MS-DOS Configuration**.

*Note: If you cannot find your CD-ROM drivers or sound card drivers in the following steps, you will need to contact your hardware manufacturers to get the appropriate DOS drivers for your system. Once these drivers are installed, you can add them to your shortcut.*

## In Your CONFIG.SYS Box

You will need the five following lines in your *CONFIG.SYS* box. The lines below should be similar to lines you already have — some of the directory names may be different.

```
DEVICE=C:\DOS\HIMEM.SYS
DOS=HIGH
FILES=40
BUFFERS=40
SHELL=C:\WINDOWS\COMMAND.COM C:\DOS /P
```

If you have a PlugPlay driver line (for example: C:\PLUGIN\DWCFMG.SYS) you will need to keep it. If you don't already have one, don't worry.

You will also need a CD-ROM driver line. (To find it, look for the line that includes a D: and the device name of your CD hardware — an example of a CD-ROM line might be `DEVICE=C:\SB16\SBCD.SYS /D:MSCD001`.) You may also see a mouse driver line (look for the word MOUSE). You shouldn't have to change these lines.

You may also have a sound card driver line or lines. See **Changing Sound Card Configuration**, p. 19, for sample lines for the sound cards that *Crusader* supports. No modification to these lines is usually necessary.

You may remove all the lines in your file not mentioned above. There are several lines you *must* remove. If you see a line that resembles one of the following lines, remove it. Remove the *entire* line — there may be additional info on the line; you will need to remove that as well.

```
DEVICE=C:\WINDOWS\EMM386.EXE
DEVICE=C:\QEMM\QEMM386.SYS
DEVICE=C:\QEMM\DOSDATA.SYS
DEVICE=C:\QEMM\DOS-UP.SYS C:\QEMM\DOS-UP.DAT
DEVICE=C:\QEMM\LOADHI.SYS R:#
DEVICE=C:\QEMM\LOADHI.SYS R:# SIZE=# C:\QEMM\ST-DBL.SYS
```

*Note:* Lines beginning with "QEMM", other than the above, may contain sound card or CD-ROM drivers, or other important information. In all other lines where "QEMM" appears, delete everything between `DEVICE=` and the second `C:`

```
DEVICE=C:\WINDOWS\SHARE.EXE
DEVICE=C:\DOS\POWER.EXE
DEVICE=C:\WINDOWS\IFSHLP.SYS
```

## In Your AUTOEXEC.BAT Box

You will need at least four lines in your *AUTOEXEC.BAT* box. The lines below should be similar to four of the lines in this file — some of the directory names may be different.

```
PROMPT $P$G
PATH=C:\WINDOWS\COMMAND
C:\WINDOWS\SMARTDRV 128 /X
C:
```

You will need a CD-ROM driver line as well — look for a line beginning with `C:\DOS\MSCDEX.EXE` or something similar. You may also see a mouse driver line (look for the word MOUSE). No modification to these lines should be necessary.

You may also have a sound card driver line or lines. See **Changing Sound Card Configuration**, p. 19, for sample lines for the sound cards that *Crusader* supports.

There are several lines you should remove from the *AUTOEXEC.BAT* of your boot disk. If you see a line that resembles one of the following lines, remove it. Remove the entire line — there may be additional info on the line; you will need to remove that as well.

```
C:\COREL\CORELCDX.EXE /D: E
```

*Note:* When you remove this line, you'll have to replace it with the line `C:\XXX\MSCDEX.EXE`, where `\XXX\` is the directory of your *MSCDEX* file. On Windows 95 computers this will be `\WINDOWS\COMMAND\`, and on non-Windows 95 computers it will often simply be `\DOS\`. You may confirm the location of your *MSCDEX* file by typing `DIR MSCDEX.EXE /s` from the root directory of your *C:* drive in DOS, or by using the **Find** function under the **Start** menu in Windows 95 to search for *MSCDEX.EXE*.

```
C:\WINDOWS\SHARE.EXE
C:\WINDOWS\POWER.EXE
WIN
```

## WINDOWS 95 TROUBLESHOOTING

*Q: When I click on my shortcut icon, it takes me to DOS, but I get an "INVALID DRIVE SPECIFICATION" prompt when I try to go to my CD drive to install the game. Why?*

A: You don't have your CD-ROM driver installed for DOS. You will need to create a shortcut and load the correct driver to run the game. Some systems with factory-loaded *Windows 95* may not come with installed DOS drivers. Contact your manufacturer for information on obtaining the necessary drivers.

*Q: When I click on my shortcut icon, it takes me to DOS and I get an "ABORT, RETRY, FAIL" prompt when I try to run the game. Why?*

A1: Ensure that your CD is inserted and correctly seated.

A2: You don't have your CD-ROM driver installed for DOS. You will need to create a shortcut and load the correct driver to run the game. Some systems with factory-loaded *Windows 95* may not come with installed DOS drivers. Contact your manufacturer for information on obtaining the necessary drivers.

*Q: I have a supported or 100% Sound-Blaster compatible sound card, but when I run the game there's no sound. Why not?*

A1: You may not have a DOS driver for your sound card. This is particularly likely on certain systems with factory-loaded *Windows 95*. Contact your computer or sound card's manufacturer for information on obtaining the correct drivers.

A2: See **Troubleshooting**, p. 23, for other possible reasons for this problem, unrelated to *Windows 95*.

*Q: When trying to run the game, the game quits with the message "Insufficient Files to run game. Crusader: No Regret requires Files=25 or greater. Please see Install Guide for information on increasing available Files."*

A: You need to increase the files and buffers lines in your CONFIG.SYS file. Return to *Windows 95* and follow these steps:

1. Right-click on the *Crusader* shortcut icon.
2. Highlight *Properties*, then left-click.
3. Left-click the *Program Tab* at the top of the screen.
4. Left-click on the *Advanced* button at the bottom of the screen.
5. Go to the *Config.sys* box and find the line that reads:

FILES = ##

6. Change this line so that it reads:

FILES = 25

7. Now, find the line that reads:

BUFFERS = ##

8. Change this line so that it reads:

BUFFERS = 40

9. Left-click on the OK button.

10. Left-click on the OK button on this screen as well.

Double-left-click on the *Crusader* icon, and it will reboot the machine into DOS mode with the changes you've made.

# DOS-BASED SYSTEMS

## QUICK INSTALL

You will need 300K of conventional memory to run the *Crusader: No Regret* install program. If you do not have 300K free, you will need to make a boot disk before you install (see **Boot Disks**, p. 14).

1. Turn on your computer and wait for the DOS prompt (C:\>). Some machines boot directly to *Windows* or another shell program. Be sure to exit *Windows* (or other shell program), and install directly from the DOS prompt.
2. For useful prep suggestions, see **MS-DOS Installation Prep**, p. 13.
3. Insert the *Crusader: No Regret* disc into the CD-ROM drive.
4. Type the letter of your CD-ROM drive (usually D:), then press **Enter**.
5. Type **INSTALL** and press **Enter**.

Follow the on-screen instructions. For more explanation, see **Installation Details**, p. 21.

## Starting the Game

Once the game is installed, to start playing go to the directory you installed to (C:\REGRET if you used the default settings) and type **REGRET** at the DOS prompt.

## ONLINE DOCS AND OTHER EXTRAS

The CD contains text documents which provide more background information on the Resistance, the WEC and the Lunar Mining Cartel. They can be found in the root directory of the *Crusader* CD and identified by the .TXT extension on their filenames. These files can be read in any text viewer. If you do not have a preferred text viewer, you can read the files by typing **EDIT D:[filename].TXT**, where D: is your CD-ROM drive and [filename].TXT is the name of the file you want to read.

**Catalog:** The **ORIGIN** interactive catalog can be viewed with *Windows 3.1* or higher (it cannot be viewed from DOS). To view it, start *Windows* and do the following.

1. Open the *File Manager*.
2. Click on the letter of your CD-ROM drive (usually D:).
3. Double-click the directory D:\GATE\CATALOG
4. Double-click on **CATALOG.EXE**.

## MS-DOS INSTALLATION PREP

### README.TXT FILE

To view an important text file that contains last-minute changes in the game or documentation, refer to the **README.TXT** file.

- Insert the *Crusader: No Regret* disc into your CD-ROM drive.
- Go to your CD-ROM drive prompt (usually D:>) and type **EDIT README.TXT**.
- To print this file, type **COPY README.TXT > PRN** at the CD-ROM drive prompt. (This command may not work if you have adjusted your printer settings from the default — refer to your printer documentation.)

### PRE-INSTALLATION PROCEDURES

*IMPORTANT: Before installing any piece of software, it is critical that your hard drive be in proper working order. Failure to verify this may result in corrupt data. Follow these steps if you do not have Windows 95 installed. IF YOU ARE USING WINDOWS 95, DO NOT USE THESE STEPS — they can damage your configuration files. See Windows 95 Installation Prep, p. 6.*

If you are using DOS version 6.2 or later, it is extremely easy to verify your drive's condition with a few simple commands.

(Caution: Do **not** run DOS **DEFRAG** in *Windows 95*.) To check which version you are running:

1. Type **VER Enter** from your C: prompt (C:\>).

The DOS version you currently have installed will be displayed on the screen. If it says **MS-DOS VERSION 6.2** or any version later than that, follow the instructions below.

*Note: If you are using DOS version 5.0, or are unable to use the commands in Steps 2 and 3, you may need to use other utilities (such as Norton Utilities or Central Point Tools) to check your drive's condition. DOS 5.0 users can also use **CHKDSK** to check the condition of their hard drive.*

2. Type **SCANDISK C: Enter** from your C: prompt.

This determines if your drive is in good repair. If any damage is found, you should repair it before continuing. Follow the instructions in your DOS manual.

3. Type **DEFRAG C: /F Enter** from your C: prompt.

This runs a complete defragmentation of your hard drive to ensure all of your data is sorted properly. It also optimizes your system for faster load and access times.

## BOOT DISKS

If you use your computer for other tasks besides playing games, it may take a little extra work to get any game running. Using *Windows* frequently, or hooking your computer up to a printer, a network, a modem, a fax machine or any sort of useful external device ties up a lot of what the game expects to be able to use.

To ensure maximum performance from *Crusader: No Regret*, it is recommended that you create a boot disk that will optimize your computer specifically for installing and running the game when you boot with the disk. If you are experiencing problems installing and/or running *Crusader* or do not have enough free memory, try creating a boot disk.

## CHECKING OUT THE FOUNDATION

If you've got a computer that meets the specifications printed on the bottom edge of the box, you should be able to run the game. First, make sure your computer has everything you need.

1. Type VER  at the DOS prompt (C:\>).

The line MS-DOS VERSION 6.0 (or any other version as long as it is 5.0 or later) should appear. If it does, so far so good. If it gives a version earlier than 5.0, you won't be able to run the game. If you have an earlier version of DOS, you will have to upgrade before you can play *Crusader: No Regret*.

2. Type MEM  at the DOS prompt.

This checks to see if you have enough memory. You must have at least 300K for your largest executable program size, and at least 7104K of XMS. (See **Memory Requirements**, p. 32, for details).

3. If you wish to use a mouse (not required for *Crusader*), check that you have a 100% Microsoft compatible mouse driver. If you don't know what driver you have, check the documents or README.TXT file that came with your mouse software. Look for a statement resembling "Microsoft mouse driver (or software) version #.#." If the number given is 9.01 or higher, your mouse is 100% compatible.
4. Check that you have a sound card that's directly supported or 100% Sound Blaster compatible. (See **System Requirements**, p. 32, and **Required Sound Card Lines**, p. 19.)

## USING THE CRUSADER BOOT DISK MAKER

1. Place the disk you want to use in your A: drive. A clean, new disk is recommended.
2. Go to your CD-ROM drive (usually D:).
3. Type CD\GATE .
4. Type BOOTDISK .
5. Your boot disk will be formatted and configured to run *Crusader*.
6. You will get a prompt indicating that your boot disk has been made and be taken to the DOS prompt in the A: drive.
7. At this point you need to *reboot your computer* with the boot disk in the A: drive.

When you boot your computer using your new boot disk, it will take you to the DOS prompt in drive A:. To play *Crusader*, type C: , then CD REGRET (or your Crusader directory, if you did not install to the default directory) , then type REGRET .

If you experience any difficulty running *Crusader* using your new boot disk, please see the next section for instructions on editing your boot disk.

## EDITING YOUR BOOT DISK

It is **strongly recommended** that you print a hard copy of your CONFIG.SYS and AUTOEXEC.BAT files before attempting to edit them.

### Editing Your CONFIG.SYS

Go to the A: prompt and type EDIT A:\CONFIG.SYS . This will pull up your CONFIG.SYS in an editor screen where you can change it.

You will need the five following lines in your CONFIG.SYS file. The lines below should be similar to the lines in your file — some of the directory names may be different.

```
DEVICE=C:\DOS\HIMEM.SYS
DOS=HIGH
FILES=40
BUFFERS=40
SHELL=C:\DOS\COMMAND.COM C:\DOS /P
```

If you have a PlugPlay driver line (for example: C:\PLUGPLAY\DWCFGMG.SYS) you will need to keep it. If you don't already have one, don't worry.

You will also need a CD-ROM driver line. (To find it, look for the line that includes a D: and the device name of your CD hardware — an example of a CD-ROM line might be `DEVICE=C:\SB16\SB CD.SYS /D:MSCD001`.) You may also see a mouse driver line (look for the word `MOUSE`). You shouldn't have to change these lines.

You may also have a sound card driver line or lines. See **Changing Sound Card Configuration**, p. 19, for sample lines for the sound cards that *Crusader* supports. No modification to these lines is usually necessary.

You may remove all the lines in your file not mentioned above. There are several lines you *must* remove from your boot disk. If you see a line that resembles one of the following lines, remove it. Remove the *entire* line — there may be additional info on the line; you will need to remove that as well.

```
DEVICE=C:\DOS\EMM386.EXE
DEVICE=C:\QEMM\QEMM386.SYS
DEVICE=C:\QEMM\DOSDATA.SYS
DEVICE=C:\QEMM\DOS-UP.SYS C:\QEMM\DOS-UP.DAT
DEVICE=C:\QEMM\LOADHI.SYS R:#
DEVICE=C:\QEMM\LOADHI.SYS R:# SIZE=# C:\QEMM\ST-DBL.SYS
```

*Note: Lines beginning with "QEMM", other than the above, may contain sound card or CD-ROM drivers, or other important information. In all other lines where "QEMM" appears, delete everything between `DEVICE=` and the second `C:`*

```
DEVICE=C:\DOS\SHARE.EXE
DEVICE=C:\DOS\POWER.EXE
DEVICE=C:\WINDOWS\IFSHLP.SYS
```

Exit and save your `CONFIG.SYS` by pressing **Alt** **F**, then **X**, then **Y**.

## Editing Your `AUTOEXEC.BAT`

Go to the A: prompt and type `EDIT A:\AUTOEXEC.BAT` **Enter**. This will pull up your `AUTOEXEC.BAT` in a editor screen where you can change it.

You will need at least four lines in your `AUTOEXEC.BAT` file. The lines below should be similar to four of the lines in this file — some of the directory names may be different.

```
PROMPT $P$G
PATH=C:DOS;
C:\DOS\SMARTDRV 128 /X
C:
```

You will need a CD-ROM driver line as well — look for a line beginning with `C:\DOS\MSCDEX.EXE` or something similar. You may also see a mouse driver line (look for the word `MOUSE`). No modification to these lines should be necessary.

You may also have a sound card driver line or lines. See **Changing Sound Card Configuration**, p. 19, for sample lines for the sound cards that *Crusader* supports.

There are several lines you should remove from your boot disk. If you see a line that resembles one of the following lines, remove it. Remove the entire line — there may be additional info on the line; you will need to remove that as well.

```
C:\COREL\CORELCDX.EXE /D: E
```

*Note: When you remove this line, you'll have to replace it with the line `C:\XXX\MSCDEX.EXE`, where `XXX` is the directory of your `MSCDEX` file. On Windows 95 computers this will be `\WINDOWS\COMMAND`, and on non-Windows 95 computers it will often simply be `\DOS`. You may confirm the location of your `MSCDEX` file by typing `DIR MSCDEX.EXE /S` from the root directory of your C: drive in DOS, or by using the **Find** function under the **Start** menu in Windows 95 to search for `MSCDEX.EXE`.*

```
C:\DOS\SHARE.EXE
C:\DOS\POWER.EXE
WIN
```

Exit and save this file by pressing **Alt** **F**, then **X**, then **Y**. You're done! Reboot your computer with the boot disk in drive A: to play the game.

*Note: If you experience problems with the boot disk, please see **Troubleshooting**, p. 22.*

## TO USE YOUR NEW BOOT DISK

1. Restart your computer with the boot disk in the A: drive.
2. To enter the installation program, go to your CD-ROM drive (usually D:) and type `INSTALL` **Enter**.

To start the game, go to your game directory (`C:\REGRET` if you installed to the default directory) and type `REGRET` **Enter**.

*Note: When you use the boot disk to run the game, make sure the boot disk is in the A: drive when you restart your computer. After you are finished playing, remove the boot disk from the A: drive and restart the computer. Your computer returns to its original configuration.*

# OTHER INSTALLATION CONCERNS: (WINDOWS 95 AND DOS)

## INSTALLING VESA-COMPLIANT DRIVERS

VESA compliance is a standardized system used to enable different graphics hardware to comply with the same basic command set.

*Crusader: No Regret* requires a 100% VESA 1.2-compliant SVGA driver. Some video cards have the necessary driver within the hardware BIOS. Customers with these cards need not load any other drivers. Other cards, however, may require a memory-resident program (TSR) to be loaded prior to the application being loaded. You must load this driver prior to running *Crusader*.

If you receive an error message during the *Crusader* install that prompts you to load a VESA 1.2 driver, check with your video card manufacturer to see if you need to load such a driver.

If you cannot find a VESA-compatible video driver on your system or you need an upgrade, contact the video card manufacturer or a third-party VESA driver provider such as SciTech Software which produces the UniVBE series of VESA drivers. See the README.TXT for more info.

To contact SciTech Software:

SciTech Software, Inc.  
5 Governors Lane, Suite D  
Chico, CA 95926-1989  
www: www.scitechsoft.com  
ftp: ftp.scitechsoft.com  
AOL: Keyword VESA  
CIS: GO VESA  
Free 15-day driver available

**Note:** *UniVBE 5.1 is not compatible with ATI video cards, but UniVBE 5.2 (when released) will work correctly. Contact SciTech Software to find out when and if a UniVBE driver will be available for ATI Video Cards.*

## CHANGING SOUND CARD CONFIGURATION

### REQUIRED SOUND CARD LINES

The following sections list the default lines that should appear in your CONFIG.SYS and AUTOEXEC.BAT files if you are using one of these sound cards. The specific parameters and directories lines for your card may vary slightly, so you should copy the ones that exist in the CONFIG.SYS and AUTOEXEC.BAT files on your hard drive. If you load the SET BLASTER= environment variable, you must ensure that it is correctly set to match your sound card settings. If you have the wrong settings, you may experience a lock-up. If you're unsure of your card type, contact your system manufacturer.

#### Creative Labs Sound Blaster

CONFIG.SYS: none

AUTOEXEC.BAT:

```
SET BLASTER=A220 I5 D1 T3
```

```
SET SOUND=C:\SB
```

*Note: This card's settings are usually determined by physical jumpers on the card.*

#### Creative Labs Sound Blaster 16 and Sound Blaster 32

CONFIG.SYS:

```
DEVICE=C:\SB16\DRV\CTSB16.SYS /UNIT=0 /BLASTER=A:220
```

```
DEVICE=C:\SB16\DRV\CTMMSYS.SYS
```

AUTOEXEC.BAT:

```
SET SOUND=C:\SB16
```

```
SET BLASTER=A220 I5 D1 H5 P330 T6
```

```
SET MIDI=SYNTH:1 MAP:E
```

```
C:\SB16\DIAGNOSE /S
```

```
C:\SB16\SB16SET /P /Q
```

#### Creative Labs Sound Blaster Pro

CONFIG.SYS: none

AUTOEXEC.BAT:

```
SET SOUND=C:\SBPRO
```

```
SET BLASTER=A220 I5 D1 T4
```

*Note: This card's settings are usually determined by physical jumpers on the card.*

## Creative Labs Sound Blaster AWE32

### CONFIG.SYS:

```
DEVICE=C:\SB16\DRV\CSP.SYS /UNIT=0 /BLASTER=A:220 I:5 D:1 H:5  
DEVICE=C:\SB16\DRV\CTSB16.SYS /UNIT=0 /BLASTER=A:220  
DEVICE=C:\SB16\DRV\CTMMSYS.SYS
```

### AUTOEXEC.BAT:

```
SET SOUND=C:\SB16  
SET BLASTER=A220 I5 D1 H5 P330 E620 T6  
SET MIDI=SYNTH:1 MAP:E MODE: 0  
C:\SB16\DIAGNOSE /S  
C:\SB16\SB16SET /P /Q  
C:\SB16\AWEUTIL /S
```

## Ensoniq Soundscape

### CONFIG.SYS: none

### AUTOEXEC.BAT (do not alter order):

```
SET SNDSCAPE=C:\SNDSCAPE  
SET BLASTER=A220 IXX DX T1  
C:\SNDSCAPE\SSINIT /I
```

**Note:** Crusader: No Regret supports the Ensoniq Soundscape in native mode. The configuration lines above will allow Sound Blaster emulation mode, but users should pick the Ensoniq Soundscape option during sound card configuration. The "XX" found in the SET BLASTER line is normal. SSINIT /I (ver. 5.01) initializes the card for Sound Blaster emulation. The switches GM, FM and MT32 are all found only on the older SSINIT executable (ver. 2.21). If the SSINIT line (last line listed above) contains one of these variables instead of /I, the drivers should be updated. Contact Ensoniq for the latest version.

If you do not have one of the above sound cards, you must have a 100% Sound Blaster compatible card. You may have to adjust your settings to ensure that your sound card is in Sound Blaster compatible mode. Check your sound card documentation.

## INSTALLATION DETAILS

To install *Crusader*, begin with the instructions on page 3 or 12 (as appropriate). This section gives more detailed explanations for the subsequent on-screen instructions.

Once the install program is running, you will see a screen displaying:

- **FREE HARD DRIVE SPACE.** If the amount displayed is less than 70 megabytes, you will have to clear some space on your hard drive before installing to that drive. Initially, this line will display space available on your C: drive. If that drive is too full to install the game, but you have another drive with enough free space, you will be able to change your path to install to your chosen drive during install.
- **SOURCE PATH.** This is your CD ROM drive, usually D:.
- **DESTINATION PATH.** Initially this will display the default of C:\REGRET.
- **CONTROL.** Initially this will display the default control option of keyboard/mouse.
- **SMALL/LARGE VIDEO.** Initially, this line will default to small video.

Option screens will pop up, in order, to allow you to set your install options.

1. You will be asked, WOULD YOU LIKE TO CHANGE THE DESTINATION PATH? To accept the default path (C:\REGRET) select NO. If you select YES, you will be given a box containing the default path, which you can edit to change the drive or directory name of the game directory.
2. You will be asked, WOULD YOU LIKE DIGITAL SOUND EFFECTS? If you select NO, your game will have no music or sound effects. If you select YES, you will be given a list of supported sound cards from which to select. Your first selection is AUTODETECT. Selecting it will make the program search for your sound card and settings. Once it determines your settings, autodetect will prompt you to confirm its findings. If for any reason autodetect doesn't work, you'll need to select your sound card by hand. Once you've selected your sound card, you will be given a list of Port, IRQ and DMA settings from which to select. The install program will automatically highlight normal default settings for your selected sound card. If your sound card uses the default settings, you can just click on each window as it appears to select the default. You will then be asked DO YOU HEAR SOUND? And a sound sample will play. If you hear the sample, answer YES. If not, answer NO to return to the start of this step.
3. You will be instructed to SELECT CONTROL TYPE. Your options are KEYBOARD/MOUSE, KEYBOARD/JOYSTICK, or KEYBOARD/GRAVIS GAMEPAD.

4. You will be asked **WOULD YOU LIKE SUBTITLES?** Select **YES** if you want the video dialog subtitled.
5. You will be asked "Would you like to have 16 bit color video."
6. You will be asked to **CHOOSE VIDEO SIZE**. If your computer is on the lower end of the system requirements scale (see p. 32 for minimum system requirements) you should choose **SMALL VIDEO**. **LARGE VIDEO** is optimized for higher-end systems.
7. You will be given a final screen that will return you to any of the options described in 1-6 above. If you are satisfied with your settings, you should select **CONTINUE INSTALLATION**. You can also select **ABORT INSTALLATION** if you need to leave the installation program before copying files from the CD.
8. When you select **CONTINUE INSTALLATION**, the computer will copy all necessary files into your chosen destination directory. When this is complete, you will be shown a box that tells you that the installation is complete. Click **OK**, and you will be returned to DOS in your game directory. You can start the game by typing **REGRET** at the prompt.

If you want to change your video size or control type options after installation, you may do so from the game's Option Screen (see pp. 4-5 of your *Playguide*).

## Adjusting Sound Preferences

If you need to change your sound card preference, you can rerun the installation at any time. This will not interfere with your saved games.

## DISK CACHE PROGRAMS

In order to reduce the CD load time for missions and improve game performance overall, it is strongly recommended that you run *Crusader* with a disk cache (such as recent versions of *SMARTDrive*). If you don't normally use *SMARTDrive*, you may want to load it temporarily by using a boot disk or shortcut to play the game. (See **Boot Disks**, p. 14.)

## TROUBLESHOOTING

Start-Up Questions . . . . .	23
Audio Questions . . . . .	23
Joystick Questions . . . . .	24
Mouse Questions . . . . .	24
Other Common Questions . . . . .	25

## START-UP QUESTIONS

*Q: When I type REGRET to begin the game, I receive the message: "Crusader needs at least 6.8 MB of free memory. Please see the install guide for help."*

**A1:** You do not have enough free memory to run the game. You need at least 300K free conventional memory, and a total of 8 MB RAM (with at least 6800K free) to play *Crusader* in DOS. Type **MEM** at the DOS prompt or check with your computer manufacturer to ensure that you have 8 MB installed on your computer. (See **Memory Requirements**, p. 32.)

Try making a boot disk to free up more memory (see **Boot Disks**, p. 14).

**A2:** You may have memory allocated to other applications. Try making a boot disk. See **Boot Disks**, p. 14.

*Q: When I type REGRET to begin the game, I receive the message: "Abnormal Program Termination."*

**A:** This occurs because you have less than 200K of conventional memory available. Make a boot disk to free up more conventional memory.

## AUDIO QUESTIONS

*Q: I have a supported sound card or 100% compatible but I am not getting any sound while playing Crusader: No Regret.*

**A1:** Make sure you have all of the necessary sound lines for your sound card loading in the **CONFIG.SYS** and **AUTOEXEC.BAT** of your boot disk or shortcut. Refer to your sound card documentation to determine which lines are necessary for the card to work correctly. A list of supported cards and the lines needed to initialize them are given in **Changing Sound Card Configuration** (p. 19).

**A2:** If your card is one of the supported cards listed in the install program, make sure you disable any emulation software you may have running. *Crusader: No Regret* provides native support for these cards.

*Q: I have loaded all the correct sound lines and still get an error when I run Crusader: No Regret.*

**A:** *Crusader: No Regret* can only provide reliable support for those cards listed on the box and in the installation program. Other sound cards may load software that is not compatible. Consult your sound card manufacturer for more information and the latest software drivers.

## JOYSTICK QUESTIONS

*Q: Why doesn't my joystick work correctly?*

A1: Make sure the joystick has been calibrated correctly. While playing use **[Alt][C]** to access the joystick calibration screen (if you have the **KEYBOARD/JOYSTICK** control option selected).

A2: You may have an active joystick port conflict. On most computers, you can find a joystick port on your sound card, your I/O serial card and also on a separate gamecard. Only one joystick port should be active; otherwise, conflicting information will be sent to the program. Consult your sound card, gamecard or I/O serial card documentation to ensure that you have only one port enabled and all the other ports disabled.

A3: Most joystick ports on soundcards or multi-I/Os won't read accurately when used with a faster machine, because these processors communicate with the joystick faster than the game expects them to. You might want to consider getting a speed-adjustable gamecard to fine-tune the communication between your joystick and your processor. Consult a hardware technician for the game card that's best for you.

## MOUSE QUESTIONS

*Q: My mouse doesn't work in Crusader: No Regret.*

*Note: You do not have to have a mouse in order to play Crusader. If your mouse doesn't work you can play with the keyboard only.*

A1: Make sure your mouse is plugged in and connected to the correct serial port, and that your driver software is loaded.

A2: You may not be loading a DOS-based mouse driver in your **AUTOEXEC.BAT** or **CONFIG.SYS**. *Crusader* only recognizes DOS-based drivers. Some multi-tasking environments (such as *Windows 95*) load their own mouse drivers, which are not compatible with *Crusader*. If your mouse works in *Windows* but not in *DOS*, you may need a DOS mouse driver. Try making a boot disk to run the game in *DOS* – see **Boot Disks**, p. 14. If you *are* attempting to run the game with a boot disk, consult the manual that came with your mouse, or contact your hardware manufacturer to get a DOS-based Microsoft mouse driver (v. 9.01 or higher).

A3: Your mouse may not be 100% Microsoft compatible. You need to find and load a DOS-based Microsoft mouse driver version 9.01 or higher.

## OTHER COMMON QUESTIONS

*Q: The game runs slowly.*

A1: Try resetting your realism options in the **OPTION** menu to speed up the game. See the *Playguide* for more information.

A2: A disk caching program such as *SMARTDrive* may increase performance. See **Disk Cache Programs**, p. 22, for information on installing *SMARTDrive*.

*Q: The game occasionally locks up.*

A: You may be loading software that is not compatible with *Crusader*. First try running the game from a boot disk. Refer to **Boot Disks** (p. 14) for more information. Also, you may not meet all of the system requirements. Refer to **System Requirements** (p. 32) to check this possibility.

*Q: When playing the game, sometimes the game crashes with the error message: "Error reading file." What's wrong?*

A: *Crusader: No Regret* is having a problem reading the CD or the files on the hard drive. This can be attributed to a configuration problem, outdated CD-ROM drivers, dirt/dust on the surface of the CD, a physically damaged CD or a corrupted file on your hard drive.

If you get this error, first try to wipe off any dust or stains from your CD. If that doesn't work, try to start the game from an earlier save. If that doesn't work consider re-installing your game. If the CD-ROM is visibly damaged, see p. 28 for information on **ORIGIN's** disk exchange program.

*Q: My game crashes when I run Crusader through Microsoft Windows or Windows NT, IBM OS/2, Desqview or Windows 95.*

A: Multi-tasking environments such as these conflict with *Crusader* in their memory usage and other system resources. We recommend that you make a boot disk or shortcut and run with **MS-DOS**.

*Q: Crusader: No Regret still doesn't work after I made a boot disk and tried the other options in this guide.*

A: Copy down the exact error code and information the computer displayed and/or an exact description of the problem. Then see **ORIGIN Tech Support/Customer Service**, next page.

## ORIGIN TECH SUPPORT/CUSTOMER SERVICE

If, after reviewing **Troubleshooting**, you are still having a problem with the *Crusader: No Regret* software, please read this section and call us. We have a staff of product support technicians ready to help you with any problems you may encounter with the game. Today's PCs run with millions of different hardware and software combinations. Because of this, you may also have to refer to your computer dealer, hardware manufacturer or system software publisher in order to properly configure their product to run with our game. When you do call us, if at all possible, be near your computer. If it is not possible to be near your computer, be sure to have the following information:

- Error message that displayed when the problem occurred
- Contents of your CONFIG.SYS and AUTOEXEC.BAT files
- Listing of your machine's type and hardware contents
- DOS version number and publisher that you are currently running
- Type and version of mouse driver you use
- Type and speed of your CD-ROM drive
- The brand of your video card and version of VESA-compliant video driver
- The brand of your sound card, and its IRQ, I/O address and DMA setting
- Contents of a CHKDSK and MEM /C statement

### PRODUCT SUPPORT MUST HAVE THIS INFORMATION IN ORDER TO EFFICIENTLY SOLVE ANY PROBLEMS.

Contact **ORIGIN Product Support at (512) 434-HELP (434-4357)**, Monday through Friday, between 9 a.m. and 12:45 p.m., or 2 p.m. and 4:45 p.m., Central time (1 p.m. to 3:45 p.m., Friday afternoons). **The ORIGIN fax number is (512) 795-8014.** Be sure to include your fax number. Faxes will be responded to by fax. ORIGIN's customer service address is: 5918 W. Courtyard Dr. / Austin, TX 78730.

### International Customer Service

ORIGIN now has customer service centers all over the world.

**Australia (EA Australia)** P.O. Box 432 / Southport QLD 4215 / Australia, or call **1 902 261 600**. This call is \$.95 per minute, ITM. Lines are open 7 days a week, between 10 a.m. and 8 p.m. If you are under 18 years of age, parental consent is required.

**England (EA UK)** P.O. Box 835 / Slough SL3 8XP, or call **01753 546 465**.

**France (EA France)** Centre d'Affaires Telebase / 9 Rue Claude Chappe / 69771 Saint Didier au Mont d'or Chedex / Lyon, or call **7253 2500**.

**Germany (EA GmbH)** Pascalstraße H6 / 52076 Aachen, or call **240 8940 0**.

**Spain (Drosoft)** Edificio Arcade / Rufino González 23 bis. Planta 1. Local 2 / 28037 Madrid, or call **1304 7091**.

**Japan (EA Victor)** 2-4-12 Jingumai / Shibuya-Ku, Tokyo 150, or call **813 5410 3111**.

## ONLINE SERVICES & BULLETIN BOARDS

Many of the most popular online services provide access to ORIGIN company news, product updates, release dates, technical support and game hints. In addition, ORIGIN has established its own electronic bulletin board as a customer service.

**America Online.** You can e-mail Customer Support at screen name: **ORIGIN CS** or Marketing at OSI. To reach our Customer Support board in the Industry Connection, press **[Ctrl][K]** for "Go to Keyword." Then type ORIGIN in the Keyword window. In addition to reading messages, you can download files from the "Origin Software Library." For membership information and a free starter kit, you can call America Online toll-free at 1-800-827-6364.

**CompuServe.** To reach our Customer Support board in the Game Publishers Forum, type GO GAMAPUB at any "!" prompt. Then select the Origin Section (Section 12). In addition to reading the messages, you can download files from the "Library Files" menu. To reach our Customer Service department by e-mail, our address is **76004,2612** (or you can post a message in the Origin Game Publishers' Section). You can reach ORIGIN Marketing at 71333,136. For membership information and a free starter kit, you can call CompuServe toll-free at 1-800-848-8199 and ask Representative #361 for your free introductory membership and \$15 usage credit.

**ORIGIN BBS.** The ORIGIN BBS is located in Austin, Texas, and has a modem support of: 300/1200/2400/9600/14,400 baud with N,8,1. It is operational 24 hours a day, 7 days a week. Full support is provided. Call **1-512-346-2BBS (2227)** to contact. No membership is required and the only cost is any long distance charges that you may incur.

**Internet.** You can e-mail technical support and upgrade questions to ORIGIN Customer Support at **support@origin.ea.com**. You can also retrieve patches, demos, press releases and screen shots from ORIGIN and Electronic Arts' anonymous FTP site at ftp.ea.com. Any patches released for any ORIGIN game can be found in the /PUB/PATCHES directory.

**World Wide Web.** Please access the ORIGIN World Wide Web site at **http://www.ea.com/origin.html**. Or, stop by Electronic Arts' web page at **http://www.ea.com**.

## ORIGIN SYSTEMS, INC. LIMITED 90-DAY WARRANTY

ORIGIN warrants to the original purchaser of this computer software product that the recording medium on which the software programs are recorded will be free from defects in material and workmanship for 90 days from the date of purchase.

If the recording medium is found defective within 90 days of original purchase, ORIGIN agrees to replace, free of charge, any such product upon receipt at its Factory Service Center of the product, postage paid, with proof of date of purchase. This warranty is limited to the recording medium containing the software program originally provided by ORIGIN. This warranty shall not be applicable and shall be void if the defect has arisen through abuse, mistreatment or neglect. Any implied warranties applicable to this product are limited to the 90-day period described above. If failure of the software product, in the judgment of ORIGIN, resulted from accident, abuse, mistreatment of neglect, or if the recording medium should fail after the original 90-day warranty period has expired, you may return the software program to ORIGIN, at the address noted below, with a check or money order for \$5.00 (U.S. currency), which includes postage and handling, and ORIGIN will mail a replacement to you. To receive a replacement, you should enclose the defective medium (including the original product label) in protective packaging accompanied by: (1) a \$5.00 check (2) a brief statement describing the defect and (3) your return address. Canada and Foreign Orders Note: Only U.S. money orders are accepted.

Except as set forth above, this warranty is in lieu of all other warranties, whether oral or written, express or implied, including any warrant of merchantability or fitness for a particular purpose, and no other representation of claims of any nature shall be binding on or obligate ORIGIN. In no event will ORIGIN be liable for special, incidental or consequential damage resulting from possession, use or malfunction of this product, including damage to property and to the extent permitted by law, damages for personal injury, even if ORIGIN has been advised of the possibility for such damages. Some states do not allow limitations on how long an implied warranty lasts and/or the exclusion or limitation of incidental or consequential damages, so the above limitation and/or exclusion or limitation of liability may not apply to you. This warranty gives you specific legal rights. You may have other rights that vary from state to state.

## CRUSADER: NO REGRET CREDITS

### A TONY ZUROVEC GAME

<i>Producer / Director</i>	Tony Zurovec
<i>Lead Artist</i>	Terry Manderfeld
<i>Lead Designer</i>	Mark Vittek
<i>Lead Programmer</i>	Tony Zurovec
<i>Asylum Sound System Programmer</i>	Jason Ely
<i>Associate Producer</i>	Jörg Neumann
<i>Game System Programmers</i>	Jason Ely, Tony Zurovec
<i>Usecode Programmers</i>	Mark Vittek, Eric Willmar
<i>Artists</i>	Amy Adams, Terry Manderfeld, Joe Rabbitt, Matt Scibilia, Matt Sheffield, Allan Zelsman, Karl Dolgener, Steve Pietzsch
<i>Additional Artists</i>	Bruce Adams, Melanie Green, Mark Vittek, Eric Willmar
<i>Designers</i>	Andrew Sega and Dan Gardopee, Todd Parsons
<i>Gameplay Music</i>	Randy Buck
<i>Audio Post Supervisor</i>	Jason Cobb, Stan Neuvo
<i>Game Sound Effects</i>	Randy Buck, Jason Cobb
<i>Voice Recording and Processing</i>	Trey Hermann
<i>Logo Design</i>	Sam Yeates
<i>Box Art</i>	Kay Gilmore
<i>Director of Studio Services</i>	Evan Brandt
<i>Quality Assurance Supervisor</i>	Chuck Denning
<i>Quality Assurance Project Leader</i>	Dustin Cryer
<i>QA Assistant Project Leader</i>	Carlus Wesley
<i>QA Lead Tester</i>	Eric Anderson, Kip Coddington, Christopher D. Errett,
<i>QA Testers</i>	Kenny Hott, Allen Jackson, Dieter Martin, Monte Mathis, Todd Wachhaus
<i>QA Hardware Supervisor</i>	Brian Wachhaus
<i>QA Hardware Tech</i>	Michael O'Reilly
<i>QA Translation Liaison</i>	Allen Jackson
<i>Customer Service Liaison</i>	Todd Bailey, Chris Primozich
<i>German QA Testers</i>	Frank Dietz, Kai Lebert, Stephan Lips, Christina Vollmer, Jörg Neumann
<i>Translations Manager</i>	Dominique Iyer
<i>Game Translation German</i>	Frank Dietz, Jörg Neumann
<i>Documentation Translation German</i>	Frank Dietz, Kai Lebert, Stephan Lips, Jörg Neumann, Christina Vollmer
<i>Documentation Translation French</i>	Didier Jumeau, Monique Quirk
<i>Marketing</i>	Brian Allen, Chris Plummer
<i>Documentation</i>	Chris W. McCubbin, David Ladyman, Incan Monkey God Productions
<i>Documentation Design</i>	Susan Bednar, Catherine Cantieri, Al Carnley, Lisa Goodrich, Roger Kriegel
<i>Documentation Programming</i>	Dustin Cryer

## VIDEO PRODUCTION

*Executive Producer*  
*Producer/Director*  
*Story*  
*Script*  
*Line Producer*  
*Assistant Director*  
*Associate Producer*  
*Director of Photography*  
*Production Assistants*  
*Gaffer*  
*Key Grip*  
*Best Boy*  
*Grip*  
*Script Supervisor*  
*Teleprompter Operator*  
*Tape Operator*  
*Production Audio Recording*  
*Boom Operator*  
*Costume Designer*  
*Costume Assistants*  
*Wardrobe Supervisor*  
*Wardrobe Assistant*  
*Specialty Props*  
*Props Assistant*  
*Special Effects Supervisor*  
*Special Effects Technician*  
*Makeup/Hairstyling*  
*Set Construction Supervisor*  
*Set Construction*  
*Video Post Production Supervisor*  
*Off-Line Editor*  
*On-Line Editor*  
*Digital Compositing/FX*  
*Additional Art*  
  
*Audio Post Production Supervisor*  
*Audio Post Production Design/FX/Recording*  
*Music Composer*  
*Casting*  
*Studio Facilities*  
*Legal Services*  
*Catering*  
*German Dubbing*

Tony Zurovec  
Steve Hemphill  
Mark Vittek, Tony Zurovec  
George Saunders  
David Knott  
Rex Gregory  
Jörg Neumann  
Layton Blaylock  
Chan Chandler, Troy Hicks, David Yurick  
Kenny Ratliff  
Carl Stitt  
Rocky Ford  
Marcus Stitt  
Pamela Richardson  
Nancy Marshall  
Jan Gregory  
Randy Buck, Jason Cobb  
John Leveranz  
Dawn Allee  
Truly Smith-Biggs, Ernesto Maldonado  
Dawn Allee  
Ernesto Maldonado  
J. M. Logan  
Jene Rose  
J. M. Logan  
Scott Prescott  
Lucy Santamassino  
Greg Dykes  
Custom Creation: Austin, Texas  
Steve Hemphill  
Jay Mahavier  
Steve Hemphill  
Allan Zelsman  
Amy Adams, Terry Manderfeld, Matt Scibilia,  
Matt Sheffield  
Randy Buck  
Randy Buck, Jason Cobb, Stan Neuvo  
George Oldziej  
Texas Casting Group: Dallas, Texas  
The Studios at Los Calinas: Irving, Texas  
Crocodile Productions, Inc.  
The Moveable Feast  
FFS, GmbH, Munich

## CAST

*Lt. Colonel Matt Shepherd*  
*Colonel Stephen Ely*  
*Denning*  
*Chairman Nathaniel Draygan*  
*Director Judith Leach*  
*Torch*  
*Trina Jenkins*  
*Professor Sekada*  
*Voice of President Gauthier*  
*WEC and LMC Guards*

Rick Porter  
Alex Morris  
Kevin Page  
Everett "Woody" Skaggs  
Mary Chris Wall  
Troy Curvey Jr.  
Lisa MacKenzie  
Melissa Deleon  
Grant James  
Cliff Stevens  
Bob Coonrod  
Robert Reed  
Spencer Prokop  
Ron Stephens  
David Yurick

*Special thanks for the video system  
and its integration*  
*Special thanks for hardware support*

Jason Yenawine  
Dennis Byers

## SYSTEM REQUIREMENTS

**Computer.** *Crusader: No Regret* requires at least an Intel 486 DX4/75 or 100% compatible system, and MS-DOS version 5.0 or higher. Pentium™ machines are recommended.

**Video Card.** At least 1 Meg VESA 1.2-compliant SVGA (640x480) is required. A local bus or PCI video card is required. VESA 2.0 is recommended.

**Hard Drive.** You must have a minimum of 70 MB free on your hard drive to install and play this game.

**CD-ROM Drive.** You must have at least a double-speed CD-ROM drive (one with a sustained transfer rate of 300,000 bytes/second or higher).

**Mouse.** *Crusader* requires a Microsoft or 100% compatible mouse using Microsoft software driver version 9.01 or higher or 100% compatible software driver.

## MEMORY REQUIREMENTS

You will need at least 8 MB of RAM to run *Crusader: No Regret*. 16 MB is recommended.

To find out how much conventional and XMS memory you have available:

From the DOS prompt, type: MEM .

When the memory information is displayed on the screen, look for the following:

- **LARGEST EXECUTABLE PROGRAM SIZE** — This number indicates how much DOS conventional memory is available. You must have at least 300,000 bytes listed here.
- **TOTAL EXTENDED (XMS) or TOTAL CONTIGUOUS EXTENDED** — This is the amount of extended memory in your computer. You must have at least 6,800,000 bytes listed here.

(If you are unsure about any details regarding the different types of memory, consult your DOS manual.)

©1996, ORIGIN Systems, Inc. *Crusader: No Regret* is a trademark of Origin Systems, Inc. Origin is a registered trademark of ORIGIN Systems, Inc. Electronic Arts is a registered trademark of Electronic Arts.

EA 1013518

